


# *Product Guide*

9th Edition



 **BARENBRUG**



A photograph of two men standing in a grassy field. The man on the left is wearing a blue short-sleeved button-down shirt and grey shorts, smiling at the camera. The man on the right is wearing a dark blue short-sleeved button-down shirt, light blue jeans, and a red and white baseball cap, looking towards the left. In the background, there is a large water fountain spraying water, and several brown cows are grazing. The sky is overcast.

### Make Life Beautiful

Scoring the winning goal in your school match. Watching your cattle graze on an endless field. Having a picnic with your friends in the park. Barenbrug believes success starts from the ground. This is why we offer you the best foundation. A foundation for opportunities.

We just love to take the road less travelled. To find new answers. Discover innovative technologies. And yes, we even take a leap of faith. Because sometimes the best ways are off road.

Royal Barenbrug.

At your service on 6 continents.  
Because you deserve the best.

 **BARENBRUG**

Make Life Beautiful



# Contents

2	<b>Global Footprint</b>	40	Bahia Grass	71	<b>Herbs and Brassicas</b>
5	<b>Pasture Grasses</b>	39	<b>Annual Summer Grasses</b>	73	Chicory
6	<b>Perennial Temperate Grasses</b>	42	Sweet Sorghum	74	Plantain
7	Perennial Ryegrass	42	Forage Sorghum	74	Forage Turnip
11	Tall Fescue	43	Hybrid Millet	76	Radish
14	Cocksfoot	44	Pearl Millet	78	Forage Rape
15	<b>Hybrid Ryegrass</b>	44	Japanese Millet	79	Brassica Management
17	<b>Annual Temperate Grasses</b>	45	Teff	81	<b>Agronomy Crops</b>
19	Italian Ryegrass	47	<b>Legumes</b>	83	Black Oats
20	Westerwold Ryegrass	49	Medics	83	Barley
22	<b>Management of Temperate Grasses</b>	50	Pink Serradella	85	Forage Oats
26	<b>Tropical Grasses</b>	51	Arrowleaf Clover	86	Triticale
28	<i>Brachiaria</i> Hybrid	51	Balansa Clover	87	Forage Rye
28	<i>Brachiaria brizantha</i>	52	Crimson Clover	88	<b>Pollinators</b>
28	Guinea Grass	52	Persian Clover	90	Phacelia
30	<b>Subtropical Grasses</b>	53	Subterranean Clover	90	White Mustard
31	Rhodes Grass	55	White Clover	91	Brown Mustard
33	Smuts finger Grass	55	Red Clover	91	Flax
34	Blue Buffalo Grass	58	Strawberry Clover	92	Buckwheat
35	Bottle Brush Grass	59	Vetch	92	Cilantro
36	Weeping Love Grass	60	Woolly Pod Vetch	93	<b>Cover Crops</b>
36	Perennial Signal Grass	60	Common Vetch	100	<b>COVERGRAZE™</b>
37	Sabi Grass	61	Lucerne	102	<b>Intercropping</b>
38	White Buffalo Grass	62	Faba Beans	103	<b>Turf Grasses</b>
38	Small Buffalo Grass	65	Lupines	105	<b>Pasture Summary</b>
39	Kikuyu Grass	66	Forage Peas	110	<b>Yellow Jacket Technology</b>
40	Bermuda Grass	66	Grain Peas		
		67	Birdsfoot Trefoil		
		67	Sainfoin		
		67	Poor Man's Lucerne		
		68	Sweet Clover		
		68	Sunn Hemp		
		69	Cowpea		
		69	Dolichos		
		70	Inoculation		



# Global Footprint

Farmers, children, home owners, football players—no matter who you are, and no matter what continent you are on, you deserve the best foundation. Healthy beef cattle in Argentina, happy tourists in Central Park, New York and successful golfers at St Andrews or Pebble Beach: our presence on six continents enables us to think globally and act locally. North or south, drought, wet or cold...

**We provide fields of production and joy!**

In the past 100 years, we have seen a gazillion soils. From enchanting city gardens to exhilarating sports fields. From strong Dutch dikes to endless cattle pastures in Brazil and New Zealand. Different worlds with different demands. So many needs, so many solutions!

## Sharing knowledge, creating solutions

We have research facilities in all the important climate zones. We are at your service on six continents with 18 branch offices and 22 research and development locations in more than 20 countries. Our R&D experts connect and exchange insights to create the exact solution you need. Our presence on the African continent creates a valuable source of tropical grass varieties all over the world. It also means that dairy producing countries like the Netherlands and New Zealand can benefit from each other's insights on nutrient boosting forage. Healthy cattle, happy farmers!

## Integrated approach

Our secret? We match excellent breeding and research with the skills of strong partners in the field. The result: the latest scientific insights are integrated thanks to the advice of professionals with intimate knowledge of your business and region. Whether you are involved in agriculture, sports or recreation, we encourage you to bring out the best in yourself. To give you a competitive advantage, we never stop learning. We organise internal training for our staff and have set up the Barenbrug academy to train external partners.

All this serves to offer you the best foundation.



**6**  
continents

**15**  
languages

**800**  
employees

**24**  
countries



**2,100,000**

Beef steers in Argentina  
enjoy Barenbrug pastures

**More than 14,440,000**

Sheep in Australia enjoy  
Barenbrug grass

**18,000,000**

People in the US enjoy Barenbrug  
grass on their home lawn

**1,928,000**

Golfers in the UK play on  
courses with Barenbrug grass

### Our mission

As Barenbrug we have an important mission: "Increase animal productivity to help feed the world and enhance the enjoyment of green spaces".

## Fostering innovation

How can we help you take the next step? What are your needs? In this ever-changing world with its constantly shifting demands, Barenbrug wants you to be the best. That is why we invest in new technologies, new partnerships and innovation. We are thrilled by bold ideas!





# Overview

## Royal Barenbrug

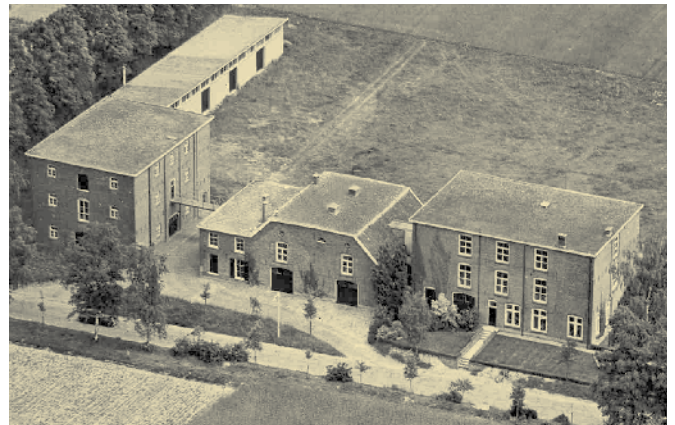
A world of possibilities—that's what Joseph Barenbrug pictured when he saw grass. He initiated the development of varieties for different purposes that is still ongoing today. These varieties are suitable for a wide range of climates. Tasty and healthy forages with high nutritional value for cattle, fine leaved and attractive green grass for parks and gardens, slow-growing grass for lawns, strong grass for sports pitches and recreation. If you can imagine it, we can create it!

## Customers first

Helping customers deal with all kinds of challenges was Joseph's mission. Frank and Bastiaan continue that tradition as the fourth generation. Today, the Barenbrug Group is the leading worldwide creator of turf and forage solutions. A family business to the core. Thanks to Joseph, Joop and Bert we can serve you with 120 years of experience!

## Royal

In 2004, Barenbrug was granted the 'Royal predicate', a distinction awarded only to companies with extreme prestige and importance in their field, that have existed for more than a hundred years, have sustainable management, and an excellent reputation. We are proud of our royal distinction.



**Here at Barenbrug SA we put the customer at the heart of the business, making the Barenbrug experience outstanding at every level. That is our commitment, our Barenbrug promise.**

**We believe success starts from the ground. This is why we offer you the best foundation. A foundation for opportunities, to find new answers and to discover innovative technologies.**





# Pasture Grasses

 **BARENBRUG**





# Perennial Temperate Grasses

**Perennial Ryegrass**  
**Tall Fescue**  
**Cocksfoot**

Temperate (cool season, C3) perennial grasses have been evaluated and grown in South Africa for quite some time now. Perennial ryegrass, tall fescue and cocksfoot are the major pasture grasses used in temperate regions of the world. In South Africa their use has unfortunately been limited by unsuitable soils, dry summers and incorrect grazing practices.

Temperate grasses have demonstrated high winter and spring growth rates in South Africa and have high nutritive value if managed correctly. Summer-active temperate grasses can provide out-of-season green feed.

These grasses are mostly suited to permanent pasture/irrigation systems in medium to high rainfall zones and are best grown on relatively fertile soils that have moisture at depth in summer. Most species require some form of rotational grazing to persist.





## Perennial Ryegrass (*Lolium perenne*)

Perennial ryegrass is a cool season grass used in cool, temperate climates throughout the world. It has many worthy attributes and has been considered the best overall pasture grass for many areas. The inflorescence is a spike with alternately arranged spikelet's attached edgewise directly to the central axis. Leaves of perennial ryegrass are folded in the bud. Blades are bright green, prominently ridged on the upper surface, and sharply taper-pointed. Lower surfaces are smooth, glossy, and hairless. Leaf margins are slightly rough to the touch. Ryegrasses, in general, grow best on fertile, well-drained soils but perennial ryegrass can tolerate wet soils better than many other grasses.

Generally, it does not tolerate drought or extended periods of extreme temperatures well. Perennial ryegrass does well in fertile summer-irrigated or sub-irrigated soils. It is not very persistent or productive on lower fertility summer-dry soils. Perennial ryegrass establishes rapidly, has a long growing season, is high yielding under good environmental conditions and proper fertilization, contains high quality nutrients, recovers well after grazing, tolerates traffic, and is valuable as hay, silage, and pasture. It is often used in mixtures with white and red clover. Perennial ryegrass is highly digestible for all types of ruminant animals.

### Maxsyn NEW

Maxsyn is the next generation in perennial ryegrass – proving itself to be persistent, tough, and with very high year-round yield. It shines in summer, staying noticeably greener. High tiller numbers help it tolerate a range of different stresses.

#### Shines in summer

Maxsyn's strength is its warm season growth. Summer is a time most farm systems are short of feed, so extra pasture is highly valued. Visually you can see the difference, with Maxsyn staying green longer into hot summer conditions.

#### Densely tillered

The more tillers a pasture has, the more robust and persistent it is. Maxsyn is denser than Trojan, and similar to Governor ryegrass.

#### Very persistent

Maxsyn has our top persistence rating, due to advanced endophyte technology, plus its strong summer growth and tillering. But its persistence advantage starts in spring, as it is easier to graze, which encourages new daughter tillers, thickens the pasture, and helps set it up for summer.

#### Seeding rate

- 25kg/ha



Maxsyn





## Governor

Governor combines genetics from two of Barenbrug New Zealand's most popular previous varieties to set a new standard for perennial ryegrass persistence. With outstanding survival and excellent DM yield on the shoulders of the season, Governor delivers feed when it's needed most.

### Genetic legacy

Barenbrug New Zealand has produced several superior ryegrass varieties over the years and two of them – Bronsyn and Tolosa - have been crossed and selected to create this new variety. The persistence of Bronsyn, combined with the high DM yield and palatability of Tolosa, make Governor ideal for dairy, sheep and beef systems.

### Persistent

Governor has shown remarkable survival through drought and high insect pressure under grazing on farm trials across the country. Fine, densely tillered and diploid, it will become the premium variety of choice for persistence.

### Seasonal growth

A key feature is Governor's ability to grow more DM on the shoulders of the season, in early spring and autumn, when it is most needed.



Governor

### Best all rounder

With a +5 days heading date, low aftermath heading (similar to Alto) and better rust resistance than its parents, Governor is a reliable and persistent allrounder.

### Seeding rate

- 25kg/ha



## 4front NEW

4front NEA2 tetraploid perennial ryegrass is a long-awaited replacement for the ground-breaking variety Bealey. Breeding and thorough trialing of potential new varieties over the past 15 years has now culminated with 4front NEA2 and will raise the bar for productivity in grazing systems targeting the highest possible performance.

### Where to use 4front

- Long-term pasture for highest productivity temperate systems
- Dairy, beef cattle and sheep
- Grazing high quality pastures well into summer
- Silage and hay production
- Temperate higher rainfall zone (>700mm) or irrigation
- Tetraploid perennial component in a high-performance ryegrass/clover pasture

### Benefits of sowing 4front

- Improved winter and early spring feed – when it is needed most
- Late – very late heading (+18 days): retains feed quality deeper into spring
- Better late spring quality and summer growth than earlier heading types
- Supports a high legume content through tetraploid palatability



4front

### Seeding rate

- 27kg/ha

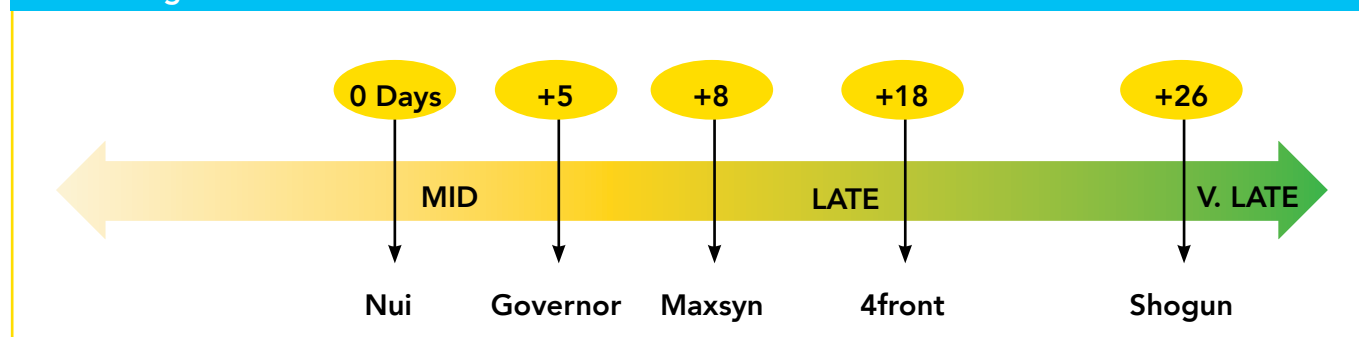




## Barenbrug Perennial Ryegrass Classification

4front (T)	Maxsyn (D)	Governor (D)
Maximum performance, Viscount replacement	Good all rounder	All rounder
Combines well with diploids and herbs	High seasonal yield	High seasonal yields, very persistent
Excellent spring and summer yield	Great summer persistence	Early spring plus autumn
Intensive farming	Intensive/extensive farming	Intensive/extensive farming

## Flowering Dates



## Seasonal Summary

	DO	DON'T
Winter	Spray weeds.	Pug your ryegrass - have strategies in place to avoid damage.
Spring	Maintain consistent residuals - your new ryegrass will grow rapidly and needs frequent grazing. Take care grazing in wet periods.	Let your pastures get too long. Make hay or silage in the first season.
Summer	Have strategies in place if the weather turns dry. Look after ryegrass - sacrifice your poor paddocks first.	Overgraze/restock your ryegrass too early - let it recover and build its reserves.





## Tall Fescue (*Festuca arundinaceae*)

Fescue is a widely adapted cool season grass. In the transition zone, fescues are used extensively due to its superior summer production. Fescues generally have a better drought, salinity, and waterlogged tolerance than ryegrass. To successfully establish fescues, make sure that planting commences during March.

### Benefits

- Better fit to fodder flow systems
- More feed when needed compared to some continental types.
- Variety suited for dairy production
- Higher summer forage yields.
- Increased persistence
- Higher intake by grazing animals
- Increased quality feed





## SOFT LEAF TECHNOLOGY

These days there is a new generation of tall fescue available with much more palatable leaves, called soft leaf tall fescues.

### Palatability

Palatability is hard to measure, but we do know a few things. In a sheep grazing trial conducted in France, soft leaf tall fescues were the only varieties the animals preferred. Sheep would eat the soft leaf tall fescues into the ground and waited for hours before starting to graze 'rough-leaved' varieties like Kentucky-31.

### Improved rust resistance

Rust is fungus that can attack fescue and other species. Rust is completely harmless to livestock, yet it affects the palatability of plants and dry matter production. The newer soft-leaved tall fescues have been bred to be more rust resistant.

### Seeding rate

- 25-30 kg/ha

### Soft Leaf Tall Fescue

- Late maturing
- Softer leaves
- More palatable
- Better rust resistance
- Winter-hardy

### Later heading date

Varieties with later heading dates are much easier to manage. They produce less and later seed heads in the spring, allowing for a longer grazing/harvest window. Later maturing varieties also show less re-heading during the season.

## Bardoux Tall Fescue NEW

Bardoux Tall Fescue is Barenbrug's top-performing variety, delivering high yields, exceptional palatability, and resilience. It's the perfect choice for livestock farmers looking to enhance their pasture quality.

### Adaptability

- Tall, tufted perennial with dense tussocks and coarse foliage
- Broad, green, fringed leaves with a glossy lower surface
- Small, spreading auricles and finely serrated, short ligule

### Key features

- The highest-yielding soft-leaved tall fescue
- Enhanced palatability for higher livestock intake
- Combines excellent feed value with effective fibre
- Drought Tolerance
- Winter Hardiness - Ensures year-round forage availability
- Robust disease resistance minimizes crop loss



Bardoux Tall Fescue





## Paolo NEW

Paolo is one of the newest soft leafed tall fescue varieties. The variety comes from our Barenbrug breeding station in France and has performed extremely well in terms of yield and more protein per hectare.

It is ideal for Mediterranean and Continental conditions, being tolerant of both damp and dry as well as both warm and cool conditions. It was selected for significantly finer leaves for improved palatability and higher dry matter intake.

### Key features

- High in demand
- Low in disappointment
- High in resilience
- Low in maintenance

## Apalona NEW

### Key features

- High production potential: Abundant forage with vital dietary fiber for livestock health
- Adaptable pasture fit: Versatile grass that seamlessly integrates into various pasture systems for simplified management.
- Palatable and Sugar-Rich: Livestock favor its taste, benefiting from high sugar content for valuable energy.
- Very perennial: No frequent reseeding required, saving time and effort.
- Wet tolerance: Thrives in wet conditions, ensuring consistent forage in challenging environments.
- Soil Versatility (pH 4.5 - 7): Flourishes in diverse soil types, adapting widely to land needs.

### The newest soft leafed tall fescue variety

- Boost Livestock Health: High-fiber, sugar-rich forage promotes animal well-being.
- Simplified Management: Easy-to-manage, versatile, and long-lasting forage option.
- Consistent Forage: Year-round supply without frequent replanting.
- Enhanced Palatability: Livestock consume more, leading to better performance.



Apalona



Apalona



# Cocksfoot (*Dactylis glomerata*)

## Archibaldi NEW

### The grass for shallow, dry soils

When soils have low water reserves and the summer temperatures are high, cocksfoot is a useful species with good dietary value. The work done by Barenburg's selectors has helped to significantly improve the crop's rapidity of installation, among other things. Archibaldi is the fruit of this work.

#### Key features

- Late flowering cocksfoot
- Strong productivity from the 1st cut until summer-autumn
- Very good establishment speed for a perennial
- Good operational flexibility and good lifespan
- Good disease tolerance, high in sugar
- Good quality forage that animals like

## Adremo

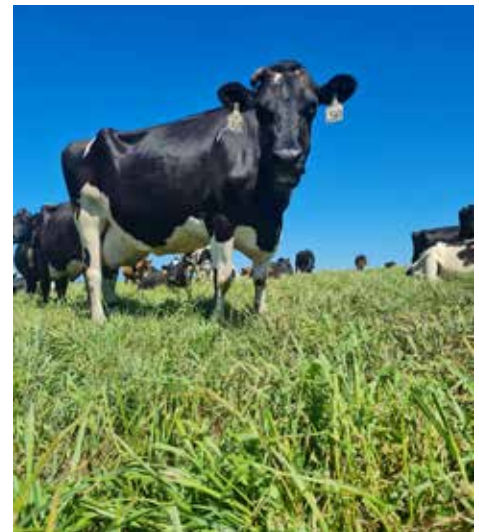
Adremo, a highly palatable cocksfoot variety, is the latest release in South Africa with exceptional dry matter results in the Southern Cape and KwaZulu-Natal trials. Cocksfoot is a very persistent perennial grass that tolerates dry summer conditions, moderate soil fertility, insect attack and set stocking. Cocksfoot is used to enhance the growth and persistence of permanent pastures in summer dry areas. It also adds variety to the stock diet. Traditionally seeding rates of cocksfoot were kept low in mixtures, because cocksfoot can dominate pastures, reducing clover levels and digestibility. New fine leaved cocksfoot cultivars like Adremo are much more compatible with ryegrass and other pasture species, allowing better long-term pastures. Cocksfoot is moderately slow to establish and has lower digestibility than most other grasses. Cocksfoot has limited winter- but good summer growth.

#### Seeding rate

Cocksfoot is most commonly sown at 4-6 kg/ha as a component of a ryegrass-based seed mix. It can be seeded at a higher rate of 15 kg/ha as a specialist pasture, particularly in dry conditions where other grasses struggle to persist.

#### Key features

- Late heading cocksfoot
- Constant high forage production throughout season
- Especially suitable for hay production
- Excellent persistency
- Very resistant to cold and drought



Archibaldi



Cocksfoot

#### Grazing management

Cocksfoot should be kept short and leafy throughout the spring to maintain feed value. If traditional cocksfoots become clumpy or stemmy they are unpalatable to stock. In grazing trials, where cocksfoot has been kept short and leafy, animal performance is reasonably good. Maintaining good legume content in cocksfoot pastures will improve animal performance.





# Hybrid Ryegrass

Hybrid ryegrass (*Lolium x boucheanum*), also known as 'short rotation' ryegrass, is generally produced by plant breeders crossing Italian or annual ryegrass with perennial ryegrass. Hybrid ryegrasses fall between Italian and long rotation ryegrasses in growth and persistence. Hybrid ryegrass gives better winter production than perennial or long rotation ryegrass, and in summer wet areas most cultivars will persist for up to 2 years. In summer dry environments hybrids generally last for 1 - 2 years.

- Perennial x Italian
- Winter growth = many Italian ryegrasses
- Out-yields most perennials during Summer & Autumn

## Using a Hybrid

Pure sward or undersowing

Year 1: 4Front or Forge

Year 2: Hybrid

Year 3: Hybrid



# Italian Hybrid Ryegrass

(*Lolium x boucheanum*)

## Barhill NEW

Barhill is the highest producing diploid hybrid ryegrass variety in SA trials, meaning more grass per hectare! It can be used for mowing, grazing and overseeding, highlighting its flexibility. It is ideal in combination with clovers and herbs.

### Key features

- High ME content
- Flexible use – grazing, cutting and overseeding
- Very good disease tolerance
- Cycle time: 2 to 3 years

### Seeding rate

- 20 - 25kg/ha

## Shogun

Over a 12-month period, Shogun has the highest DM yields of any ryegrass we have tested. It produces more than most perennial ryegrasses in summer and autumn. This level of feed supply frees up more paddocks for renewal. The increased profitability Shogun can generate also helps fund investment in regular pasture renewal.

### Fast establishment

Shogun’s fast establishment is comparable to that of an Italian ryegrass. This allows paddocks resown with Shogun to be brought back into the grazing rotation quicker than those renewed with perennial or other hybrid ryegrass.

### Key features

- Fast establishment
- Ideal for over-sowing in perennial mixtures
- Strong longer lasting winter growth

### Seeding rate

- 25 - 27kg/ha



Annual	Italian	Hybrid(Short rotation)	Long rotation	Perennial
Shogun				
Shogun replaces some Italian. Giving similar winter growth, plus better persistence & black beetle control.		←	→	Shogun replaces some long rotation grasses. Giving similar persistence, with higher winter & total DM yield.

Shogun is no ordinary hybrid ryegrass





## Tetraploid Hybrid Perennial Ryegrass (*Lolium x boucheanum*)

### Forge NEW

Forge is a breakthrough in genetic gain, and the new champion in 2–3-year pasture in temperate conditions. It combines a massive improvement in year-round yield with superb cool season growth and all the grazing, production, and environmental benefits of a tetraploid.

#### Key features

- New perennial hybrid
- Forge gives this extra yield and quality across all seasons
- Excellent cool season yield
- Forge's extra cool season yield supports winter milking
- Palatability and high feed value lifts per animal performance
- Forge establishes rapidly, with fast regrowth, so it is ideal for direct-drilling

#### Breeding & persistence

Forge has 75% perennial: 25% Italian ryegrass parentage, so it fits between Shogun (50:50% parentage), and 4front perennial ryegrass. Forge's persistence is very good for a tetraploid hybrid, thanks to high tiller density and a focus on persistence in its breeding.



#### Sowing rates

- Drilling: 20-22kg/ha
- Broadcasting: 25 – 27kg/ha





# Annual Temperate Grasses

## Italian Ryegrass

Autumn planting / Feb. – Apr.

Produce early winter feed but grows less active during the coldest months. Best DM production during Spring. Seed production stimulated by a cold period (winter). Growth stops during November/December.

**Diploid varieties:** Barcrespo

**Tetraploid varieties:** Barmultra II

## Italian Ryegrass

Spring planting / Aug. – Sept.

Flowering and seed production only after about 15 months. DM production usually high during Spring, Autumn, and the next Spring..

**Diploid varieties:** Barcrespo

**Tetraploid varieties:** Barmultra II

## Westerwold Ryegrass

Autumn planting / Feb. – Apr.

Long photoperiodic day lengths stimulate flowering and seed production – normally around October. This results in a decrease in DM production and less palatable pasture. Good production during Autumn and early Winter.

**Diploid varieties:** Ribeye

**Tetraploid varieties:** Maximus  
Tetragrande





## Italian Ryegrass (*Lolium multiflorum*)

### Barcrespo NEW

#### Key features

- Rapid establishment and high yield potential.
- Ideal for creating fodder banks with better longevity compared to alternative Italian ryegrasses.
- Very leafy product, high tiller density and guaranteed nutritional value

#### Record Production

- Barcrespo exhibits exceptional yield on the first cut, ensuring a secure harvest early in the season.
- The product's high leafiness contributes to optimal nutritional value, promoting increased milk or meat production.

#### Healthy Foliage

- Longevity of the pasture.
- Production of high-quality forage well-consumed by animals.

#### Seeding rate

- 25kg/ha

## Barmultra II

After 50 years of fame the good old variety Barmultra has been replaced by Barmultra II. Barmultra II offers better dry matter yields, better disease resistance and better persistency.

Barmultra II is very suitable for both autumn- and spring seeding and can be used for seasonal production or bi-annual forage production. Barmultra II can be grown on all types of soil with good water supply. Peaty soils and soils with high groundwater tables are less suitable.

#### Key features

- Fast germination and establishment
- Quick soil coverage
- Extended green material production
- Quick spring growth after winter
- Broad leaves
- Very good frost tolerance in springtime
- Dense growth resulting in less invasion of weeds
- Fast regrowth after each cut



Barcrespo



Barmultra II



# Westerwold Ryegrass (*Lolium multiflorum*)

## TetraGrande NEW

TetraGrande is a new tetraploid annual ryegrass known for its medium maturity, high yield, rust resistance, good winter growth, and high adaptability. It is ideal for pasture overseeding and can be mixed with other pasture grasses or legumes, establishing quickly with impressive yields per hectare.

### Key features

- Very high yields: Produces abundant biomass early Spring.
- High nutritional feed value: Excellent for livestock feed.
- Excellent salt tolerance: Thrives in saline conditions.
- Excellent disease resistance: Resistant to rust and other common diseases.

### Seeding rate

- 25 kg/ha



TetraGrande

## Ribeye

Ribeye is an earlier producing, earlier maturing, and winter-hardy diploid variety that has proven itself in yield, quality and grazing tolerance. The forage quality of Ribeye is excellent both in nutritive value and low rust infection. Ribeye has also been given high marks for winter-hardiness in cold injury ratings. Ribeye has performed exceptionally well in the Cedara trials with high dry matter yields and aggressive regrowth.

### Key features

- Excellent for overseeding
- High forage production
- Withstands high grazing pressure
- Excellent forage quality
- Rust resistant & cold tolerant

### Seeding rate

- 25-30kg/ha



Ribeye planted with grass





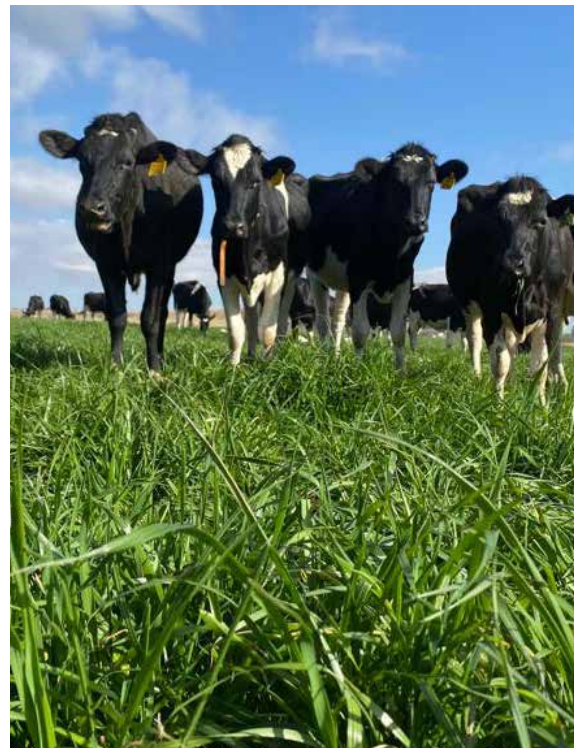
## Maximus

Maximus is an elite mid flowering tetraploid annual ryegrass with more even seasonal growth, good heat tolerance and good rust resistance. Maximus sets a new standard for high performance tetraploid annual ryegrasses. Developed from a Mexican background, Maximus has good heat tolerance and good rust resistance.

- Tetraploid annual ryegrass
- Excellent for overseeding and mechanical harvesting
- High yields
- Very high quality
- Early production
- Winter-hardy
- Good rust resistance

### Seeding rate

- 25-30kg/ha



Maximus



# Management of Annual Grasses

Annual ryegrass is normally planted from March to May. The recommended seeding rate is 20-25 kg/ha in a well-prepared seedbed. The ideal seeding depth is 2 cm. Broadcasting and no-till are two of the most popular planting methods.

Once established, grazing the pasture should commence at a four-leaf stage. Rotational grazing will provide the best yield results, however, ryegrass can tolerate close and continuous grazing. Ryegrass responds to Nitrogen and tolerates moderate soil acidity. In high rainfall areas, high production can be expected throughout the winter. To increase winter forage availability, annual ryegrass can be planted with a companion, such as a cereal crop or forage brassica.

# Management of Temperate Grasses

For sustainable food/forage production, you must be able to produce food/forage that is compliant with the following criteria:

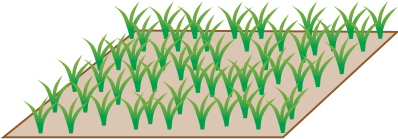
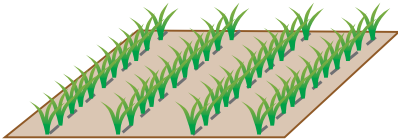

- High dry matter (DM) production
- High quality
- High DM intake
- High palatability

### Pasture Management

**Goal:** Get as much ME/ha directly into animals.






**How:** Improve what currently grows (quality and quantity). Grazing more of it (utilisation).

### Pre-sowing

Seeding Methods		
<h4>Spreading seed evenly</h4> <p>E.g. roller-drill, broadcast seed, drill with narrow row spacing</p>  <ul style="list-style-type: none"><li>• Seed well spread over ground surface</li><li>• Good ground gives weed control</li><li>• More space for seedlings helps slower establishing clover</li></ul>	<h4>Drilling in rows</h4> <p>E.g. standard or direct-drill sowing in rows</p>  <ul style="list-style-type: none"><li>• Seed placed tightly in rows</li><li>• Where rye grass and clover are drilled together in the same row, clover suffers</li><li>• Space between rows for weeds</li></ul>	<h4>Cross-drill or diamond-drill</h4> <p>E.g. sow with direct-drill in two directions</p>  <ul style="list-style-type: none"><li>• Better ground coverage than one drill pass (better weed control)</li></ul>





Pasture Conditioning Scoring			
Rank	Description	Pasture	Suggested action
5	The whole paddock has a dense sward of desired grasses and clovers.		No action required. Would be happy if whole farm is in this state.
4	Parts of the paddock show signs of low level damage and some less vigorous grasses.		Check fertility. Apply summer N to encourage tillering. Paddock probably OK for coming season.
3	Majority of paddock has low level damage, weeds, and less vigorous grasses.		Apply summer N. Undersow in the autumn with perennial ryegrass containing the appropriate endophyte.
2	Parts of the paddock have severe damage. A lot of weeds and bare soil.		Either: 1. Sow into summer crop this spring and sow in perennial pasture in autumn 2. This spring oversow chicory with fertiliser 3. Undersow paddocks with chicory, and plan to renew in the following 6-12 months
1	Entire paddock severely damaged.		Sow into summer crop this spring and plan to sow in perennial pasture in autumn.



## Basic steps for establishment

**Aim:** for strong, healthy plants prior to summer. Sow early, establish before winter.



Do a soil analysis before planting.



Take climatic conditions into consideration.  
For example: wind if you broadcast seed.



Seeding depth has a huge impact on establishment.



Rolling after planting is very important.



Be aware of insects and the damage it can cause to seedlings.



Use a herbicide program to control weeds effectively.

## Growth Management - Persistence

### First Graze

- Administer pull test
- 4 - 6 weeks after planting
- Stock must graze pasture as quickly as possible to approximately 8 cm (imitate mower action). This will stimulate regrowth. It is only possible in multi camp systems.



### Summer Management

- Leave > 4-5 cm residuals (plant reserves are in the base of tillers, lowers soil temp and shades summer grasses)
- Assist pasture growth by applying nitrogen and irrigating
- Don't overgraze (especially new pasture). Feed supplements, long rotation (ration cows), destock
- Other: Good soil fertility; allow to gain cover before grazing after dry



### Winter Management

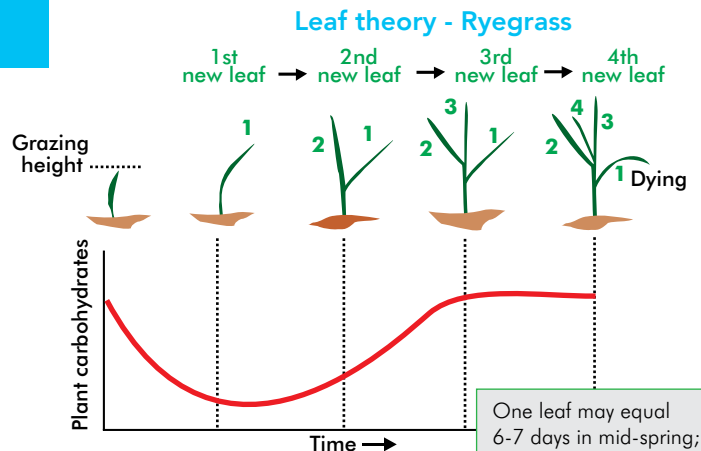
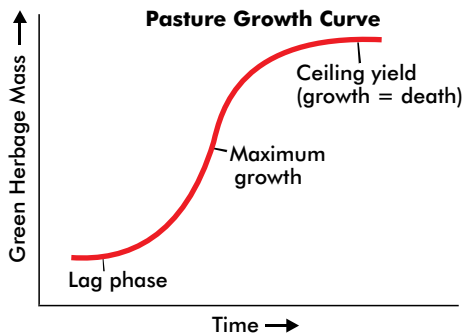
- Avoid pugging (tetraploids especially) – sacrifice poor paddocks first or use holding areas
- Manage pugging damage immediately
- Ensure good soil fertility to grow more grass – fertilising is important
- "It takes grass to grow grass" - leave reasonable residuals







**Graze at the correct time - avoid lag phase and build up of dead material**



**Monitor your pasture. If you don't monitor it, how can you manage it!**

## Pasture quality

### Pre-sowing

- Choose appropriate species/varieties
- Consider tetraploid ryegrass
- Take note of flowering date

### Management

- Limit grass seeding in spring – graze at the correct time (refer to leaf theory diagram)
- Graze to a residual of 1500 kgDM/ha (4-5 cm)
- Aim for a high clover content, avoid shading and manage the soil pH

### High Utilisation

- The pasture's condition at grazing is a result of how it was managed during the previous grazing
- Graze to consistent residuals

### Pasture species for quality and persistence:

White Clover  
Red Clover  
Lucerne  
Chicory  
Plantain  
Perennial Ryegrass  
Short Term Ryegrass  
Tall Fescue  
Bromus  
Cocksfoot

**Pasture is:** Low cost. Profitable. Environmentally friendly – animals eat it themselves.

**But it's:** Variable in supply. Doesn't keep. Loses quality when seeding. Paddocks tend to deteriorate over time.

**It needs to be:** Grazed at the correct time and residuals. Monitored (feed wedge). Renewed when required.

**Do all this and you:** Maximise the amount of ME/ha consumed by the animals....which is highly profitable!





# Tropical Grasses

***Brachiaria* Hybrid**  
***Brachiaria brizantha***  
**Guinea Grass**

Tropical pasture grasses cover a wide range of species. The environments in which they are grown include the wet tropics and the semi-arid tropics. Most of the species are perennials and are characterized by processing the efficient C4 photosynthesis pathway. They are primarily used by grazing animals for meat, milk, or fibre production. Tropical grasses offer high water use efficiency, high production and improved sustainability outcomes. They have the potential to produce large amounts of plant dry matter in a growing season, provided that they have adequate soil water and nutrients.



Barenbrug's tropical grasses are coated with a new Yellow Jacket technology that consists of a biostimulant formation that ensures faster establishment and better seedling survival in difficult conditions.





## Brachiaria Hybrid

### Sabiá NEW

Sabiá hybrid brachiaria adapts to various environmental conditions. Its robustness and low canopy height for grazing management are valuable functional benefits, which provide adaptability and reliability. In ideal conditions, with fertile soils and adequate management, it presents a high forage production potential and animal productivity. It is a variety that stands out!

#### Key features

- Low canopy height for grazing management
- Higher production in dry season
- Intense tillering for excellent ground cover
- High annual dry matter production
- Higher animal productivity compared to older varieties, like Marandu

#### High performance in dry season

A key benefit of this hybrid is its increased production in the dry season. On average it produced 47% more than Marandu in the dry season of the year, having concentrated 34% of annual production in this season. In summary, in comparison with Marandu, Sabiá performs much better in the dry season. Thus, in the rainy season, the recovery of production is much faster.

#### Seeding rate

- 10-15 kg/ha (coated)

### Cayana NEW

Focusing on the needs of tropical agriculture production, we bring a great innovation: Cayana Hybrid Brachiaria. This hybrid is the right choice for those looking for greater productivity, profitability, and success. The hybrid was developed by Barenbrug, a global leader in the forage market. Tradition and leadership in this sector reinforce our commitment to tropical agriculture production. We are the only private company with a strong and established tropical forage breeding program.

#### Key features

- Excellent response to high fertility
- Excellent tillering capability
- High leaf-stem ratio
- High forage quality
- In average of two years of evaluation, it delivered 42.2% more animal productivity compared to Marandu



Sabiá



Cayana



## *Brachiaria brizantha*

### Marandu

#### Key features

- Good persistence under grazing
- More compatible with legumes than some other *Brachiaria*
- Tall type - well suited to cutting
- High seed production potential
- Best adapted to the humid and sub-humid tropic areas

## *Guinea Grass (Megathyrsus maximum)*

### Agrosavia Sabanera NEW

Agrosavia Sabanera is a new variety of Guinea grass, which serves as forage for cattle, beef or dairy. Ideal for use in grazing, under a rotational paddock system for medium to good fertility soils, that are well drained.

#### Key features

- Excellent forage in dairy and weaner systems
- High production potential
- High leaf-stem ratio
- Good shade tolerance, well adapted to silvopastoral systems

#### High Performance in dry season

- Carrying capacity potential of up to 4 LSU/ha/year (LSU - large stock units)
- Average weight gain with 4 LSU/ha = 725 g/LSU/day
- Average meat production with 4 LSU/ha = 1 058.5 kg/ha/year.
- Milk production: 9.4 l/LSU/day.
- Sabanera has a higher gross dry matter production, generating higher profits than Mombaca
- Nutritional quality at 21 days or regrowth - crude protein: 13.3% and digestibility: 60.7%

#### Management

Agrosavia Sabanera can be used for cutting and carrying systems, silage, haymaking, and for direct grazing. It usually takes 3-4 months to reach first grazing. It is recommended to manage grazing in a rotational system, in which the period of occupation is not more than three days, and the rest period is 21-24 days. There should be a minimum residual of 10-15 cm, allowing recovery of the pasture to be rapid.

#### Seeding rate

- 5-10 kg/ha (coated)



Marandu



Agrosavia Sabanera





## Mombaca

Mombaca is characterized by its high nutritional content and it responds very well to intense fertilization. It is greatly used as a forage grass by beef producers. Mombaca is highly recommended for intense grazing systems and is a good alternative for pasture diversification with Brachiaria like Marandu. It requires fertile soils and is not recommended to be planted on slopes.

### Key features

- Tufted perennial with deep root system
- Low resistance to drought and water logging
- Requires fertile soils
- Rotational grazing recommended
- It produces between 12% and 14% crude protein
- It is recommended for milk production and intensive fattening
- Has production potential of 14 to 16 ton dry matter

### Grazing management

It can be either rotationally grazed or set stocked. Some farmers also prefer to cut-and-carry. Graze or cut every 40-45 days in the wet season and 60-70 days in cool season. The preferred grazing height is between 10 and 15 cm.

### Seeding rate

- 6-10 kg/ha (coated)



Mombaca





# Subtropical Grasses

**Rhodes Grass**

**Smuts finger Grass**

**Blue Buffalo Grass**

**Bottle Brush Grass**

**Weeping Love Grass**

**Signal Grass**

**Sabi Grass**

**White Buffalo Grass**

**Small Buffalo Grass**

**Kikuyu Grass**

**Bermuda Grass**

**Bahia Grass**

Subtropical (warm season, C4) perennial grasses are traditionally grown in summer rainfall environments. However, they can be successfully grown in the Mediterranean environments due to a combination of drought tolerance and the mild winter conditions in coastal districts. Well adapted species can survive extended dry periods and resume growth rapidly after summer-autumn rainfall. They can increase production on poor sandy soils and provide year-round groundcover to minimise the loss of topsoil as a result of strong winds. The feed quality depends on grazing management and nitrogen fertilisation, while most species require some form of rotational grazing to persist. Most of the species are tufted grasses and perform well in mixtures with other species with similar growth habits.



Barenbrug's subtropical grasses are coated with a new Yellow Jacket technology that consists of a biostimulant formation that ensures faster establishment and better seedling survival in difficult conditions.





## Rhodes Grass (*Chloris gayana*)

Rhodes grass gained quite the momentum the last couple of years. It is a easy-to-establish, quick covering, subtropical grass that is suited to both grazing and hay systems. Great as fodder for cattle, sheep, goats and horses. Longevity attainable when Rhodes grass are allowed to set seed once each season. It is widely adapted to most soils, with an ideal pH of 5.5 - 7.0 (KCl) and areas with relatively low rainfall.

### Establishment

- October/November or February/March
- Do not plant/cover seed deeper than 25 mm

### Soil preparation

- Early preparation helps retain moisture
- Seedbed: clean, even, free of weeds and well rolled
- Many failures occur when seedbeds are too loose and powdery
- Rolling before and after sowing ensures good establishment
- Rhodes grass can be sown on dry soils where the soil is inclined to form a hard crust after rolling
- Subsequent rain will wet the seed for germination
- A light shower of rain followed by long dry period could result in poor establishment

### Seeding rate

- 5-10kg/ha (uncoated); 12-20kg/ha (coated)

## Endura NEW

Endura is a diploid Rhodes grass that was bred in Australia. This perennial variety was selected from the market leading variety, Tolgar, taking the greatest characteristics of this long-standing variety and significantly improving forage quality. Leaf blades are thinner again, resulting in finer textured vegetative growth, with a reduced amount of stem.

The enhanced multiple tillering ability of Endura produces a higher leaf to stem ratio, providing more consumable dry matter than Katambora. The result of intensive breeding selection work from Tolgar has resulted in Endura's ability to make top quality hay, with conditioning and drying down traits significantly improved. Less stem results in more even dry down rates and the ability to capitalise on quick initial leaf dry down gains. Maturity evenness of this variety provides higher levels of protein feed later in the season that has higher utilisation rates. Endura demonstrates exceptional persistence and recovery after grazing or cutting. It flowers later compared to Tolgar and Katambora, providing Endura the ability to maintain feed quality longer into the season.





**Endura Rhodes Grass**

### **Key features**

- Significantly later flowering than Tolgar and Katambora
- Greater synchronisation and uniformity of flowering over other varieties
- Higher leaf to stem ratio and finer stem compared to Tolgar and Katambora
- Highly suited to hay production – makes exceptional hay
- Well suited to grazing, reclamation and soil conservation activities
- Highly palatable due to less stems – greater feed utilisation
- Higher salinity tolerance than Katambora
- Nematode resistant – ideal rotational option
- Moderate drought, frost, cool season and acid tolerance

### **Katambora**

A diploid, tufted grass. Leafy, densely growing, with long, relatively thin stolons. Selected for drought tolerance and very rapid growth rates. Establishes and covers soil rapidly, persisting well, even at low fertility. Katambora has a high seed yield ability and is classified as a Nematode resistant type.



**Rhodes Grass**





## Smuts finger Grass (*Digitaria eriantha*)

Smuts finger is a sweet grass and keeps its palatability until late in winter – even after being killed by frost. It is an excellent pasture grass that can be utilized from mid-late summer/autumn. It can also produce good quality silage if it is chopped fine enough. It is well adapted to medium and low potential soil in areas with rainfall higher than 500 mm. It is also successful on soils with a high clay content but cannot withstand waterlogging.

### Establishment

- November, January, and February are the best seeding months
- Stop 8 weeks before the first frost is expected
- Where weeds are not a serious problem, you can plant during September/October
- Invasion of *Eragrostis* can pose a problem for the lifespan of Smuts finger grass

### Utilization

- Protein content depended on the age of the plant, the season and quantity of N applied
- Heavy grazing later in the season (especially February to May) can result in poor production in the following season
- It prefers long rest periods and DM production increases with longer cutting intervals compared to shorter intervals
- The protein content and the digestibility also decrease with longer intervals, but the total protein/ha will be higher as an effect of the higher DM production
- Not tolerant to heavy grazing
- Should be grazed before piping for the highest crude protein
- Used in summer – CP about 10%
- Used in winter – CP about 8%
- Withdraw animals after December for winter usage

### Soil preparation

- Soil surface must be dry. Germination will take place with the first rains.
- The subsoil must contain sufficient moisture. This will be beneficial if dry weather is experienced after germination.

### Seeding rate

- 3-7kg/ha (uncoated); 12-20kg/ha (coated)



Smuts finger Grass

### Seed mixtures:

- Suitable in subtropical grass
- Works well with lucerne (in rows), but bloating is still a possibility
- System and farm fit custom mixtures can be recommended

### Irene

A diploid, tufted perennial with a high palatability. Well adapted to most well drained soils and grows well in mixtures with rhodes grass. These mixtures can however lead to difficulties during seed production.

### Tip Top

A diploid, tufted perennial, selected from 'Irene' by ARC for seed quality and homogeneity. It has an upright growth habit and is early flowering, with a better leaf: stem ratio and rust resistance. It tolerates very cold winters and grows well on shallow, stony soils.





## Blue Buffalo Grass (*Cenchrus ciliaris*)

Blue buffalo is a grass that is adapted to warm, low rainfall areas in SA, having a relatively good drought resistance. It is widely adapted to soil types, except light sand, and prefers alkaline soils. It has very deep roots of up to 1.5 m and has rhizomes that allow it to produce more tillers. It is normally used for cattle but can also be utilized by sheep and horses or used for making hay.

### Establishment

- November, February and March are the best seeding months
- Rolling the soil is essential

### Soil preparation

- Reacts favourably when soils are loosened before the summer rains
- Heavy soils that crack during winter need less loosening than lighter soils
- Cultivation should not be done in winter, seeing that it can lead to dying off of the grass

### Utilization

- Grazing normally starts in November for mature Buffalo grass when the grass is 300 mm long
- It is best if the grass is either lightly or completely grazed down
- If not, the result would be a mix of new leaves and old stalks, reducing palatability
- It can be utilized as both a very quick rotation and a relative long grazing period
- At the beginning of summer, the grass grows quicker, making it more challenging to implement grazing systems
- It is recommended to make hay or be rested during winter
- Remove all the old material at the end of winter
- Keep it as leafy as possible

### Seeding rate

- 5-10kg/ha (uncoated); 12-20kg/ha (coated)

## Gayanda

Fine, medium-short, tufted, non-rhizomatous type, to 90 cm tall (commonly 30-60 cm), mid-season flowering, suitable for light to medium textured soils. It has very good stock acceptance and is characterised by its dense tillers. It has a lower growth height than Molopo, making it a better option for sheep.

## Molopo

The variety comes from the North West Province of South Africa. It is a tall, rhizomatous grass with distinctly grey leaves and straw-coloured seed heads. It is cold tolerant and grows longer into the cool season. It is well adapted to heavier soils and has a good seed production if adequately fertilised with N. Its upright and tall growth habit makes it better suited for cattle than Gayanda.



Blue Buffalo Grass





## Bottle Brush Grass (*Anthephora pubescens*)

Bottle brush is a very palatable and excellent fodder grass that is widely adapted to most soil types and climates. It is heat and drought tolerant, growing in areas with a rainfall of 350 mm or higher. It is relatively easy to establish and is less sensitive to low soil fertility than other grasses, flourishing on sandy soils.

### Establishment

- Establish: October/December or February/March
- Soil pH: 4.8-5.8 (KCl)
- Planting depth: <25mm
- Seeds are woolly - coating is essential
- The seed can be broadcasted or drilled

### Utilization

- Strict rotational grazing is required due to its high palatability

Alternatively, it can be left during its growing season to be utilised during winter and early spring

### Production potential

- A good utilisation potential compensates for the relative low production potential
- It is a low-cost grass for dry areas
- Achieves economic animal production at a semi extensive level
- $\pm 0.75\text{t/ha}$  per 100mm rain

### Seeding rate

- 3-5kg/ha (uncoated); 12-20kg/ha (coated)

### Wollie

Originates from Swartruggens in the North West Province of South Africa. It was selected from a commercial seed field of the "common" variety for a more uniform growth habit.



## Weeping Lovegrass (*Eragrostis curvula*)

Weeping lovegrass is mostly utilised as a hay crop, performing best in summer rainfall areas that receive 650 mm/year or more. It is widely adapted but prefers sandy soils. Its quality is dependent on the fertility of the soil, therefore fertilisation is the key to good quality fodder production. Where it is utilized as a pasture it is best to graze it early in the season, seeing that the quality and quantity decreases later in season. In areas where frost occurs the grass normally dies back, regrowing early spring.

### Establishment

- Establish: October/November or February/March
- The seedbed should be fine, firm and free of weeds – due to its seed being very small
- The seedbed should be rolled before and after seeding
- Use Teff (4-6kg/ha) with *Eragrostis* where weeds are a problem but then an early cut is essential

### Hay production

- To ensure a high protein content it should be cut before it flowers
- For a higher DM yield it should be cut later but not later than early flowering
- Take note of its leaf stage to ensure the highest CP, digestibility and intake

## Perennial Signal Grass (*Urochloa oligotricha*)

### Kupfer NEW

Perennial signal grass is a dense perennial tufted grass that mainly occurs naturally in bush and veld areas. It is a very palatable pasture grass with an exceptional regrowth ability after a grazing. It can be grown in a range of soil types but prefers light to medium type soil types.

### Key features

- Grass for bushveld/grassland regions with 400-1500mm rainfall
- Leafy with excellent nutritional value
- Very palatable fodder in winter
- Quick establishment and rapid regrowth in active growing season
- Does not mind slight waterlogged conditions

### Seeding rate

- 1-3kg/ha (uncoated)



Weeping Lovegrass

### Seeding rate

- 5-8kg/ha (uncoated); 8-12kg/ha (coated)

## Ermelo

Ermelo is the most popular variety being used in South Africa, especially in the colder summer rainfall areas. It can survive severe frost and will grow on almost any soil, even on sandy soils with a low pH. It prefers higher rainfall areas, but does not adapt well to wet, waterlogged soils.



Kupfer





## Sabi Grass (*Urochloa mosambicensis*)

### Sabi NEW

*Urochloa* Sabi grass is native to Africa. A perennial, loosely tufted grass sometimes rooting and branching from the lower nodes, variable in size and habit, occasionally with stolons and rarely rhizomes. It is mostly used as a permanent pasture but also makes good hay. It is effective for erosion control and other applications where rapid establishment and good ground cover is advantageous.

#### Key features

- Palatable, hardy and quick to establish
- Well suited to the dry tropics
- Responds well to rainfall and grows in a range of well-drained soil types

#### Management / Agronomy

Sabi grass can tolerate very heavy grazing, stock will selectively graze it when young and still find it more palatable than many other warm-season grasses when mature. It also recovers well from fire. Sabi grass combines well with legumes, although it can dominate in the short term if well fertilised. Good ground cover and rapid seedling development contribute to suppression of annual weeds. Despite growing naturally on soils with low available phosphorus, large responses to applied P have been measured. On very low fertility soils, applications of up to 35 kg/ha P may be necessary to maximise production. A critical P level in the tissue of 0.2% of the DM is proposed. It can also survive on low N soils by virtue of non-symbiotic nitrogen fixation in the rhizosphere. However, it does respond well to applied N.

#### Seeding rate

- 5-10 kg/ha (coated)



## White Buffalo Grass (*Panicum maximum*)

*Panicum* is a summer growing perennial grass that is widely used in cattle grazing systems. It is characterised by summer dominance and usually requires rainfall of 600 - 1 000 mm per year. It does not tolerate very wet, heavily structured soils or sandy soils with a poor fertility. It does however tolerate frost and soil acidity to a certain extent.

### Establishment

- Establish: Late summer or early autumn but not later than February
- It is sensitive to weed competition
- Can withstand frost to a certain degree

### Utilization

- Heavy grazing can have great negative effect on *Panicum* compared to other grasses, especially before the winter
- It should not be grazed or cut below 30 cm, to improve persistence and to achieve the maximum yield
- It should be allowed to grow out well after heavy grazing to maintain excellent production
- It is not suitable for sheep, seeing that their grazing habit is too low
- It has a better late season production and is more palatable than Smutsfinger grass

### Seeding rate

- 3-8kg/ha (uncoated); 8-15kg/ha (coated)

## Gatton

Gatton is a very palatable, shade tolerant grass with broad green leaves. It is well accepted by most livestock, with particularly high intakes of its young leafy growth.

## Small Buffalo Grass (*Panicum coloratum*)

*Panicum coloratum* is a species of grass known by common names like small buffalo grass or klein grass. It is a tufted perennial grass that usually has rhizomes. Its firm, usually erect stems grow up to 1.4m tall. The leaf blades are 10 to 30cm long and has a green to waxy blue-green colour. It is used as a pasture grass and/or to make hay. It produces a large amount of forage for animals and does well in hot and colder climates.



Buffalo Grass



Buffalo Grass

## Klein Verdi

### Key features

- Well adapted to heavy, self-mulching, black clay soils
- Tolerates temporary waterlogging and flooding
- Drought tolerant
- A moderate soil salinity tolerance
- Very persistent once established
- Cold tolerant
- High forage quality
- Lower N-requirement than *Panicum maximum*





Small Buffalo Grass

### Establishment

Seed can be broadcasted on the surface or planted in rows at a seeding depth of 1-2 cm. Rolling after planting improves establishment. Rolling before planting to compact the seedbed slightly can be valuable in heavier soils, which have less tendency to crust if rolled prior to broadcasting and then lightly covering the seed. *Panicum coloratum* is generally slow to establish, competing relatively poorly with weeds and other pasture species during early growth. In warmer environments, early or late season planting is therefore preferred to avoid competition from vigorous mid-season weeds. In cooler subtropical environments where early plantings may encounter competition from spring weeds, it is best to plant when there is the greatest probability of experiencing several consecutive days of rainy weather.

### Utilization

It is mostly used as a pasture, but larger types are suitable for making hay and silage. It grows well with legumes and other grasses but it may be selectively grazed if combined with less palatable species. Its palatability declines as it matures, as with most subtropical grasses. Stoloniferous types are ideal for erosion control.

### Seeding rate

- 3-6kg/ha (uncoated); 6-10kg/ha (coated)

## Kikuyu Grass (*Pennisetum clandestinum*)

Kikuyu is an aggressive and vigorous perennial grass that spreads by surface and underground stolons. It normally creates a dense mat of stolons and stems, outcompeting many other species in the long run. Its soft stems grow relatively upright and produce a high number of leaves relative to other grasses. Kikuyu is capable of high summer growth, but milk production can be limited by its relatively low quality. Thus, to maximise production of cows per hectare, it is essential to maximise the quality of the pasture consumed. Grazing at the 4.5 leaf stage provides the highest proportion of leaves and therefore increases quality. Grazing past this stage increases its stem growth, allowing the stem fraction to accumulate with each grazing. To provide winter to spring forage kikuyu is commonly oversown each autumn with annual ryegrass or less commonly with oats, brassicas or clovers. A smooth transition from the summer kikuyu phase to the winter forage at both the establishment and heading of the annual forage is essential. It should be planted in a well-prepared field, under favourable conditions of adequate moisture and soil fertility.

### Seeding rate

- 5-10kg/ha (coated)



## Bermuda Grass (*Cynodon dactylon*)

It is predominantly used in permanent pastures for grazing or cut-and-carry but can also provide useful stand over or deferred feed. It is a valuable and hardy turf type grass for soil conservation as it provides excellent ground cover.

### Key features

- Widely adapted to soils and climates
- Palatable
- High nutritive value when young
- Tolerates heavy grazing
- Can be used to make hay and silage
- Tolerates salinity as well as short periods of flooding

### Establishment

Seed is best sown onto a well prepared, fine and weed-free seedbed, which is rolled in. Seedlings usually root down quickly. It grows on a wide range of soils, but does best in relatively fertile, well-drained soils. It is adapted to a broad range of soil pH (4.5-8.5) but it grows best when the pH is above 5.5.

### Utilization

It is extremely tolerant of heavy grazing, but it is more productive if correctly managed. Regular grazing and nitrogen fertilisation are necessary to maintain quality. It is very palatable if kept short in growth and fertilized. A stubble height of 5-10 cm under grazing or cutting allows good regrowth and maintains sward density.

### Seeding rate

- 8-12kg/ha (uncoated); 20kg/ha (coated)

## Bahia Grass (*Paspalum notatum*)

Bahia grass is one of the earliest species adopted as a permanent sown pasture. It is also suitable for making hay and silage but should be cut before flowering to avoid hay being spoiled by presence of ergot- infected seed heads. Once established, it provides a good stable ground cover to combat erosion, particularly that caused by water movement.

### Key features

- Palatable when young
- Ability to withstand heavy grazing and trampling



Bermuda Grass



Bahia Grass

- Legume compatibility
- Waterlogging tolerance

### Establishment

Seeds should be drilled or broadcasted into a well-prepared, fine, weed-free seedbed. It should preferably be planted less than 1.5 cm deep. It grows best on deep, moist, fertile, sandy loams and clays usually of alluvial or basaltic origin. Such soils are subject to compaction under intensive grazing. It has little tolerance of salinity but is very tolerant of poor drainage. It can be planted at any time from spring to late summer, although it is best planted just before the expected rainy season since germination and establishment can be slow.

### Seeding rate

- 8-12kg/ha (uncoated); 20kg/ha (coated)





# Annual Summer Grasses

**Sweet Sorghum**  
**Forage Sorghum**  
**Hybrid Millet**  
**Pearl Millet**  
**Japanese Millet**  
**Teff**

Cool-season grasses produce ample forage in the spring and fall, but high temperatures and short-term drought stress often limit growth during the summer months. Therefore, there is a need for additional grazing, hay or green chop during July and August. Warm-season annual grasses can fill this gap with relatively high-quality forage when properly managed. Advantages to using annual summer grasses include fast germination and emergence, rapid growth, high productivity, and flexibility of utilisation. Warm-season grasses can be grazed as needed and excess growth can be harvested as hay or silage. Disadvantages include the high cost of annual establishment and the increased risk of stand failure due to variable rainfall in late spring and early summer.



## Sweet Sorghum (*Sorghum vulgare*)

### Barsweet

Barsweet is a sweet sorghum x sweet sorghum hybrid which is perfectly suited for making silage and hay. It is also suitable for grazing at a mature stage, being leafy with an excellent palatability. It is an excellent stand over feed for late grazing into autumn and winter.

#### Key features

- Stand over feed: Very Good
- Stand Over: Excellent
- Hay Making: Good
- Green Chop: Excellent
- Silage – Pit: Excellent
- Silage – Plastic Wrap: Excellent
- Its late flowering reduces ergot risk

#### General comments

- Establish: Spring to Summer - when soil temperatures rise above 16°C
- Planting depth: 20 – 40 mm
- Roll the area after seeding/planting – this ensures good seed-soil contact
- Fertilise according to a soil analysis
- First cut when plants reach a height of 750 – 1000 mm



Barsweet

#### Seeding rate

- 4-7kg/ha (marginal dryland)
- 8-12kg/ha (good dryland)
- 15-25kg/ha (irrigation)

## Forage Sorghum (*Sorghum spp.*)

### Barchoice NEW

- Multipurpose forage sorghum, with excellent re-growth and production
- Tall, upright growing stem with basal tillering
- Good leaf:stem ratio, translating to exceptional palatability
- Suited in a multiple cut and bale-, grazing, as well as end of season silage production system
- Tolerant to drought and water logging conditions, once established
- Resistant to lodging, foliar diseases, stem borers and shoot fly
- Days to 50% flowering - 62 – 65 days

#### Seeding rate

- 12.5-18kg/ha (dryland); 20-25kg/ha (irrigation – most suited) from October – December -soil temperature reaches 16°
- Plant depth – not deeper than 15 – 20mm
- Rainfall: >500mm



Ideal for baling

#### Take note for sorghums:

- Take prussic acid precautions when sorghums are grazed. Therefore, do not utilise if plants are under stress.
- Gradually expose hungry animals to sorghum
- Not suitable for horses





## Bargrazer

Bargrazer is a forage sorghum X sudan hybrid variety that has proven itself time after time. It is widely adapted, doing well on sandy-, loam-, and clay soil. It provides good quality grazing and is ideal for making hay.

### General comments

- It requires seasonal rainfall of more than 500 mm
- Cows can start grazing at 75 cm and sheep at 50 cm
- Graze down to a height of no less than 200-250 mm
- When making bales it should be cut before stems get too thick. 3 to 4 cuts are possible if done at 75-90 cm
- Establish: October to December – soil temperature must be 16°C and rising
- It reacts positively to Nitrogen applications

### Seeding rate

- 20-25kg/ha (irrigation); 12.5-18kg/ha (dryland)

## Hybrid Millet (*Hybrid pennisetum*)

### Barfast NEW

- Hybrid Forage Millet Blend
- Barfast is a blend between two high quality hybrid millets
- Tall, upright and heavy tillering forage plants, with high leaf density, resulting exceptional biomass yield in the summer months
- Provides the insurance of an early maturing and ultra late flowering types in one cultivation, providing exceptional yield in the first two harvests, as well as available material later in the season. Protein prone not to decline with delayed harvest or usage, because of the high leaf:stem
- Excellent disease package
- Drought tolerant, once established
- No risk of prussic acid poisoning

### Establishment requirements

- 5 – 12kg/ha, once soil temperature reaches 18°C in a well-prepared seedbed



Bargrazer



Hybrid Millet



Barfast



## Pearl Millet (*Pennisetum glaucum*)

### Babala

Babala is a common variety of pearl millet that is easy and quick to establish. It can either be grazed or used for silage and is ideal to fill gaps in any fodder flow system. It is a drought tolerant crop and poses no risk for prussic acid poisoning.

#### Management

- Establish: October to January
- Rainfall requirement: >400 mm
- Graze at a height no longer than 500 mm for the best quality
- No Prussic acid precautions needed
- Suitable for sand to loam soils, prefers well-drained soil and can grow in poor fertility soil
- Suitable pH: acid, neutral and alkaline soil

#### Seeding rate

- 25kg/ha (irrigation); 15-20kg/ha (dryland)



Babala

## Japanese Millet (*Echinochloa esculenta*)

Jap millet is an annual warm-season grass that is grown primarily as forage. It has the most rapid growth of all Millets, providing excellent weed suppression and preventing erosion when used as a cover crop. Jap millet is better suited for colder climates and wetter soils than other annual summer grasses. It can even grow in flooded soils and standing water as long as a portion of the plant remains above the water's surface.

#### Key Features

- Establishes in soil temperatures above 14°C
- Grows 60–122cm tall, with a fibrous root system reaching up to 46cm deep
- Tolerates pH as low as 4.5 but grows best from 4.6–7.4
- Reaches maturity between 65 to 90 days

#### Seeding rate

- 12-20kg/ha



Japanese Millet



Japanese Millet





## Teff (*Eragrostis teff*)

Teff is a self-pollinated, warm season annual grass which can be harvested multiple times during the growing season as dry hay, silage or pasture. As a fast-growing crop, Teff combines excellent forage quality with high yields during a relatively short growing period. Adapted to most areas in South Africa and can be utilized for dairy, beef and horses.

### Management

Plant from late spring/early summer into a firm seed bed at a seeding depth of no deeper than 0.6 cm. Soil temperatures at planting should be at least 16° C and rising. Teff does not tolerate frost. Therefore, planting dates should be well beyond historic first spring frost dates. Teff grows best when air and soil temperature are warm. Early spring plantings during cool periods may result in slow growth and crop stunting. Teff should be cut before heading for best forage quality and leave a minimum of 10 cm stubble. Multiple cut systems may require split applications of nitrogen for maximum production. Delaying harvest until heading may adversely affect the yield of subsequent cuts and the total seasonal yield.

### SA Brown

- Excellent for hay production – especially in the higher rainfall areas
- It can be used for grazing and should be grazed at an early stage to improve palatability
- It is also very effective as green manure crop and to suppress weeds
- Plant from October to December
- Average rainfall: >500 mm
- Widely adapted to soil types – from sand to clay
- Fertilizer applications positively effect dry matter production

### Seeding rate

- 8-12 kg/ha (dryland)
- 20 - 25 kg/ ha (irrigation)



Teff



## Moxi NEW

MOXIE Teff is the latest addition to Barenbrug SA's summer package. It encompasses world-class genetics and Barenbrug's prestigious "Yellow Jacket Coating" technology, which is formulated to ensure seed quality and sustainability to the grower.

### Key features

- Quick establishment
- Rapid regrowth and recovery after first mowing or grazing
- Excellent feed quality and high summer production within a relatively short growing season, as hay, silage or pasture crop
- No hydrocyanic acid poisoning risk
- Good drought tolerance, once established, making it a very adaptable crop
- Highly palatable
- Adapted to a wide range of soil types, on dry land or irrigation
- Production Potential of 5 – 15t/ha

### Seeding density

- 8-12kg/ha (Dryland) and 20-25kg/ha (Irrigation)



## Tiffany

Tiffany Teff grass is a fine stemmed annual grass that has large crowns and numerous tillers, with a shallow, massive fibrous root system and a uniform plant height at harvest maturity. It was one of the very best forage producers in a USA breeding program. Based on its impressive results it was selected and tested in SA with great success. Its seasonal yield can range from 5 - 15 tons of dry hay per hectare depending on growing conditions and the number of cuttings. It is a cost-effective crop that requires minimal pest and weed control.

### Key features

- It normally outyields SA Brown
- Multiple harvests during the season
- Excellent forage quality compared to other C4 grasses
- A very palatable "soft" forage for livestock
- No prussic acid concerns
- First crop in 45-55 days and 28-35 days between subsequent cuts
- A very palatable "soft" forage for livestock



Tiffany





# Legumes

 **BARENBRUG**





# Legumes

## **Medics**

### **Pink Serradella**

### **Annual Clovers**

Arrowleaf  
Balansa  
Crimson  
Persian  
Subterraneum

### **Perennial Clovers**

White Clover  
Red Clover  
Strawberry Clover

### **Vetch**

Woolly Pod Vetch  
Common Vetch

## **Lucerne**

### **Faba Beans**

### **Narrow Leaf Lupines**

### **Forage Peas**

### **Grain Peas**

### **Birdsfoot Trefoil**

### **Sainfoin**

### **Poor Man's Lucerne**

### **Sweet Clover**

### **Sunn Hemp**

### **Cowpea**

### **Dolichos**

Legumes drive pasture production by producing nitrogen. They must be carefully inoculated to ensure success. Adequate pasture nutrition is important for maintaining the dominance of improved species in a pasture. Nitrogen is one of the most important elements of pasture nutrition. Protein levels and the digestibility of pastures are improved by legumes, resulting in improved livestock performance.

#### **Factors to consider when choosing a suitable legume:**

- Rainfall or irrigation
- Soil depth and profile
- pH - alkaline or acid
- Longevity of the pasture/legume
- Grazing systems
- Harvesting plans

Disclaimer: Legumes can cause bloat if not managed correctly.





## Medics (*Medicago spp.*)

Medics grow best during the warmer conditions of autumn and spring, but a wet autumn can provide a good amount of feed during winter.

This free-seeding annual legume has a creeping and prostrate growth habit but does not root from its nodes. Barrel medics flower in spring after a 'vernalisation' period of cold weather, producing small, yellow flowers that give rise to a spiral burr containing 6-10 seeds. The burr has straight spines and can be combed from wool. Medics are adapted to a Mediterranean climate with dry summers.

They survive wet summers in the subtropics because of their hard seed, but with enough softening to allow re-establishment in autumn.

In permanent pastures, medics suffer from competition in autumn from the summer growth of grasses. Reducing this by heavy grazing in autumn, summer drought or by cultivation improves seed germination.

### Seeding rate

- 10-15kg/ha (pure); 1-4kg/ha (mixtures)

### Barsa Medi Mix

Barenbrug has formulated a medic mixture consisting of a Barrel medic a Polymorpha medic and two annual clover varieties to help produce better overall yield and feed quality with the idea to generate better fodder flow in a medic rotational farming system.

### Seeding rate

- 8-15kg/ha



Medic roots



Medics



Medic Cultivars						
Type	Variety	Soil pH	Rainfall	Hard seeding rating	Insect tolerance	Days to flower
Polymorpha	Scimitar	Moderate acid-alkaline	350-450	8	Mid-high	80-90
Polymorpha	Santiago	Moderate acid-alkaline	325-425	10	Susceptible	80-85
Polymorpha	Cavalier	Moderate acid-alkaline	350-450	7	Mid-high	90-95
Truncatula	Caliph	Neutral-alkaline	250-350	9	Mid-high	80-85
Truncatula	Jester	Neutral-alkaline	350-550	9	High	105-110
Truncatula	Parabinga	Neutral-alkaline	250-350	8	Mid-high	80-88
Truncatula	Paraggio	Neutral-alkaline	350-450	8	Mid-high	95-100

## Pink Serradella (*Ornithopus sativus*)

### Emena

Serradella is adapted to deep, well drained, sandy soil with a low pH and fertility level. It is particularly tolerant of low phosphorous levels. It can also tolerate moderate to severe aluminium and manganese levels, of which both reduce the productivity and persistence of other legumes such as clovers and lucerne. It also has a relatively good resistance to insects and disease.

Serradella has a deep root system that allows it to continue growing actively during early to mid-Summer, when other annual legumes have finished their growth cycles. Pink serradella has an erect growth habit and pink flowers. It is an annual that germinates in autumn/early winter and produces during winter, spring and early summer. Serradella is non-bloating and contains condensed tannins. These tannins protect protein in the rumen, which increases protein absorption and digestive efficiency in ruminants. Pink serradella is soft seeded.

#### Seeding rate

- 15-25kg/ha



Pink Serradella



Pink Serradella pods





## Annual Clovers

### Arrowleaf Clover (*Trifolium vesiculsum*)

#### Zulu II

##### Key features

- Upright growth habit
- A low bloat risk
- Suited for a range of soil types providing they have a pH of 5.0 - 7.0
- Intolerant of waterlogged soil
- Very sensitive to red-legged earth mite as a seedling
- Very slow to establish with little winter growth
- The seed should be sown in autumn into a well prepared, weed free seedbed
- The seed is small and is very sensitive to being sown too deep (<10mm)

##### Seeding rate

- 8-10kg/ha (pure); 2-4kg/ha (mixtures)

### Balansa Clover (*Trifolium michelianum*)

Balansa clover is well adapted to most soils in the pH 5.2 - 8.0 range, but not deep sands. It is highly tolerant to water logging and tolerates mild salinity. It is an effective substitute for sub clover in the right conditions. Balansa is very hard seeded which is useful with cropping phases and harsh summers. Grazing the pasture during summer and autumn will help soften the seed and improve germination.

Balansa clover has a semi erect growth habit and has proven to be very satisfactory as a monoculture or as a companion with annual grasses and cereals. It is an aerial seeder, therefore deferring grazing during flowering and seed set is necessary to create a good seed bank. This is critical during its first year, allowing regeneration in future seasons.

##### Seeding rate

- 5-6kg/ha (pure); 1-2kg/ha (mixtures)

#### Paradana

##### Key features

- Mid-season maturity, approximately 120 days to flowering
- High winter/spring dry matter production and nitrogen fixation
- Highly suited for hay production
- Tolerates water logging and mild soil salinity
- Excellent regeneration from hard seed
- Recovers strongly from heavy grazing



Arrowleaf Clover



Balansa Clover



## Crimson Clover (*Trifolium incarnatum*)

Crimson clover is a soft seeded winter annual, herbaceous legume. The leaves and stems of crimson clover resemble those of red clover, but the leaves are round tipped with more hair on its stems and leaves. Seedlings grow rapidly from the crown forming a rosette.

### Seeding rate

- 10-15kg/ha (pure); 1-4kg/ha (mixtures)

## Kardinal

### Key features

- Early to mid-season maturity
- Shows good early vigour & winter production
- Good winter hardiness and frost tolerance
- Excellent pioneering plant, especially on acid soils
- Adapted to a large range of soil types, grows well in light soils
- Suitable for grazing fodder and green manure
- Provides large red flowers through spring with a brilliant colour

## Persian Clover (*Trifolium resupinatum*)

Persian clover is mostly used as an annual forage due to its excellent regrowth. It is slow to cure as hay, therefore roller conditioning may be advantageous when utilized as hay. Persian clover has very small seeds which require a fine, weed free seed bed and it should be sown no deeper than 10mm. Its ability to reseed varies depending on external factors and the variety. It has low levels of oestrogen but can be a bloat risk if not managed correctly. It is intolerant of acid and sandy soils and is very susceptible to red-legged earth mite and lucerne flea.

### Seeding rate

- 6-10kg/ha (pure); 2-5kg/ha (mixtures)

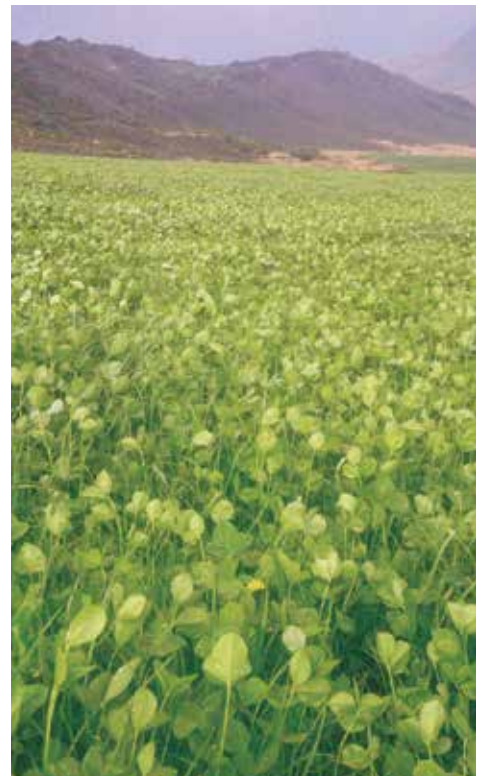
## Lightning

### Key features

- Mid-season maturity - about 145 days to flowering
- Vigorous, large leafed, soft seeded annual clover
- Establishes quickly, even when sown late
- Can be sown with oats or tetraploid ryegrass
- Tolerates waterlogging and mild soil salinity



Crimson Clover



Persian Clover near Kokstad





Subterranean Clover

## Subterranean Clover (*Trifolium subterraneum*)

Subterranean clover (*Trifolium subterraneum*) is a type of clover that is well-adapted to low-growing conditions, making it suitable for pasture and forage purposes. It is known for its ability to fix nitrogen in the soil through its association with nitrogen-fixing bacteria, which can enhance soil fertility.

### Common utilizations of subterranean clover include:

1. Pasture and Forage: Subterranean clover is often used in pasture mixes for livestock grazing. It provides a nutritious forage option for animals such as cattle, sheep, and goats. The nitrogen-fixing capabilities of subterranean clover can also contribute to improved soil fertility in pastures.

2. Cover Cropping: Farmers often use subterranean clover as a cover crop to improve soil health during fallow periods. As a cover crop, it helps prevent soil erosion, suppress weeds, and add organic matter to the soil. The nitrogen-fixing ability of subterranean clover can benefit subsequent crops by making more nitrogen available in the soil.

3. Green Manure: Subterranean clover can be ploughed into the soil as green manure. This practice contributes organic matter to the soil, improves soil structure, and releases nutrients as the clover decomposes.

### Key features

- Dependent on seed for the following years growth
- Very drought tolerant
- Shallow rooted so cannot utilise deeper soil moisture
- Susceptible to red-legged earth mite and lucerne flea
- Poorly tolerant of water logging
- Highly productive in spring but no summer production
- Not suited for spring seeding



Subterranean Clover

### Seeding rate

- 10-15kg/ha (pure); 2-6kg/ha (mixtures)



# Dalkeith

## Key features

- Early season maturity – 97 days to flowering (AUS)
- Good early root growth and establishment
- Good hard seed levels
- Demonstrates good persistence

Dalkeith belongs to the *Trifolium subterraneum* ssp. family and demonstrates a prostrate to semi-erect growth habit. It persists well on various soil types and has early maturity, requiring a minimum growing season of four months. It has a high hard seed level, which in combination with its early maturity, makes it well suited to low rainfall cropping rotations.

Dalkeith has taken up well in the 350 to 600 mm rainfall zones. It will be able to provide good early herbage production in low rainfall zones. Care must be taken with new sown pastures so as not to overgraze too early, as plants can be pulled from the ground.



Dalkeith

Annual Clover Cultivars						
Type	Variety	Soil pH	Rainfall requirements	Hard seeding rating	Insect tolerance	Days to flower
Arrowleaf Clover	Zulu II	Moderate Acid-Alkaline	400-575 mm	10	Low	125-130
Balansa Clover	Paradana	Moderate Acid-Alkaline	450-550 mm	10	High	115-120
Crimson Clover	Kardinal	Moderate Acid-Alkaline	550-750 mm	3	High	120-125
Persian Clover	Lightning	Moderate Acid-Alkaline	650-800 mm	3	Low	145
Subterranean Clover	Dalkeith	Moderate Acid-Alkaline	450-750 mm	3	Low	97
Hard Seeded Rating: 1 = Few to no hard seeds; 10 = 90%hard seeds; Soil quality: Alkaline = pH8.5; Neutral = pH6.5; Moderate acid = pH5.0; Acid = pH4.5						





## Perennial Clovers

### White Clover (*Trifolium repens*)

A perennial legume, capable of very high production if fertility is high and moisture adequate. Its ability to fix atmospheric nitrogen makes a substantial contribution to the growth of companion grasses. It is very suited to irrigation and has a poor drought tolerance, making it of little use in low rainfall areas. However, a small amount is often added to pasture mixes in these drier areas in the hope it will survive in damp spots. White clover can also behave as an annual in drier areas, regenerating from seed when conditions are favourable. White clover uses stolons to expand the size of plants and put down new roots.

#### Seeding rate

- 6-10kg/ha (pure); 2-4kg/ha (mixtures)

### Dwarf Micro (S184)

Dwarf Micro is a small leaved, dense perennial clover. It is an excellent permanent cover crop, working especially well in orchards due to its low growth and shade tolerance. It requires low maintenance, providing erosion control and weed suppression. It has a shallow root system and does not compete for moisture if grown under trees. Dwarf Micro has a long flowering period allowing it to attract pollinators and beneficial insects such as natural predators.

### Haifa

#### Key features

- Medium to large leaved, upright perennial clover
- Adapted to a wide range of soils
- Good persistence under high stocking rates
- Performs well in moderate and subtropical regions
- Excellent heat tolerance and seeding ability



White Clover



White Clover and Ryegrass mix





## AberLasting NEW

AberLasting has the ability to improve soil health and animal production, increase biodiversity and reduce fertilization application. Combines fast establishment trait of White Clover with the persistence of Caucasian clover. The dual root system gives AberLasting the ability to produce above-ground (stolons) and below-ground (rhizomes). This elevates your pasture's capacity to fix nitrogen and be more effective to tolerate heavy grazing.

### Key features

- Nitrogen fixed and accumulated by legume, released back into the soil
- Able to maintain leaf-water content under limited water availability
- High in protein and highly digestible
- Improved drought and cold tolerance
- Reduce soil compaction
- Excellent grazing tolerance, with a rapid recovery following heavy grazing
- Adapted to wider range of climates and soils
- Raises milk and liveweight gain
- Attracts beneficial insects and pollinators

### Seeding rate

- 1 – 3kg/ha (pasture mix - preferably); 3 – 5kg/ha (monoculture)
- Used in pasture mixtures, with a companion grass, most typically ryegrass



AberLasting





## Red Clover (*Trifolium pratense*)

Red clover is an upright, short-lived perennial. It has a strong taproot that allows it to use subsoil moisture in summer better than white clover. It does not tolerate dry conditions or drought, or poorly drained soils. Red clover provides extra feed in late spring and summer in high rainfall areas, irrigated pastures or on naturally summer-moist soils that are well drained. It can be sown as pure swards as a specialist crop for hay, as silage or grazing. Rotational grazing will promote plant longevity and persistence. Most cultivars do not persist beyond 2 to 3 years.

### Seeding rate

- 8-12kg/ha (pure); 3-6kg/ha (mixtures)

## Freedom!™ Red Clover NEW

### Key features

- Low Pubescence & Reduced Dustiness: Less stem hair, minimizing dust in hay
- Faster Drying: Quick water evaporation, ideal for hay production
- High Forage Quality: Palatable, nutritious, and rich in true protein
- Winter-Hardy & Persistent: Improved resilience in cold climates
- Nitrogen Fixing: Lowers fertilizer costs by enhancing soil nitrogen

### Uses

- Hay Production: Dries faster, reducing quality loss.
- Silage: Retains high true protein, boosting feed value.
- Grazing: Rapid regrowth provides consistent, high-quality forage.

### Establishment

- Fast Establishing Legume: Best planted in fall, 8 weeks before frost, or frost-seeded in early spring.
- Versatile Planting: Suited for full-cultivation, no-till seeding, or broadcast when frost-seeding.
- Pre-Inoculated: Coated with Yellow Jacket®, enhancing water absorption and plant health.

### Management

- Cutting Regime: For first-year stands, cut before full bloom. For established stands, cut at early bloom, with subsequent harvests at late bud or early bloom.
- Avoid Harvesting: In extreme heat or close to first freeze to ensure stand longevity.



Red Clover



Freedom!™ Red Clover



## Strawberry Clover (*Trifolium fragiferum*)

A long lived, prostrate, perennial clover that tolerates poorly drained, moderately alkaline and saline soil. These are conditions in which white, red and subterranean clovers either grow poorly or do not persist. Strawberry clover is most productive on heavy neutral to alkaline soils of reasonable fertility. In other conditions it may compare poorly with the other clovers. Continuous grazing that reduces competition from grasses favours strawberry clover. It spreads by both seed and stolons. It is a good cover crop in mixtures with other perennial clovers.

### Palestine

#### Key features

- Hard seeded variety
- High nutritive value and productive through spring and summer
- Very grazing-tolerant and persistent
- Drought and water-logging tolerant; tolerant of salinity

#### Seeding rate

- 2-3kg/ha



Strawberry Clover





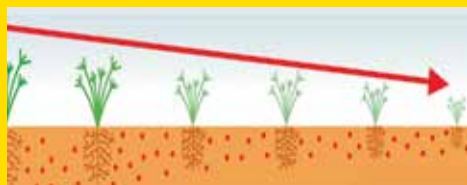


## Perennial Clover Cultivars

Type	Variety	Soil pH	Rainfall requirements	Hard seeding rating	Insect tolerance	Days to flower
White Clover	Storm, Haifa Durana	Moderate Acid-Alkaline	700-800mm+	3	High	-
Red Clover	Barduro Kenland	Moderate Acid-Alkaline	650-750mm+	3	High	-

Hard Seeded Rating: 1 = Few to no hard seeds; 10 = 90% hard seeds;  
Soil quality: Alkaline = pH8.5; Neutral = pH6.5; Moderate acid = pH5.0; Acid = pH4.5

## Benefits of clover legumes in grass



### Grass only pastures

Declining pasture DM and available soil nitrogen  
Declining soil fertility with long term grazing  
Declining paddock protein over time with a sharp decline during drought and winter months  
Reduced carrying capacity and liveweight gains over time

Available soil  
nitrogen



### Grass and legume pasture

Sustained pasture DM and available soil nitrogen  
Legumes provide increased paddock protein and maintains protein in drier and/or colder months  
Pasture will sustain higher stocking rates and/or liveweight gains

## Vetch (*Vicia*)

Vetch is an annual pasture/forage/grain legume, extremely palatable at all growth stages, from early green shoots, as dry matter/hay or silage through to seedpods and seeds over summer. It has a very high feed value for animals as green plants and dry matter as well as grain. Vetch can offer substantial improvements in soil fertility, structure and organic matter as well as offering a weed and disease break for cereals in a crop rotation. Vetch fixes atmospheric nitrogen in the soil, that is beneficial for subsequent cereals or grasses in both yield and quality. Growing vetch as a pasture or hay in crop rotations can be a very good strategy for controlling problem grass weeds.



Vetch



## Woolly Pod Vetch (*Vicia villosa*)

### Haymaker Plus

Haymaker Plus, also referred to as grazing vetch, was derived from selections out of Namoi. It demonstrated mid maturity along with a semi erect growth habit. Haymaker Plus is suited to a wide range of soil types, performing better on lighter soil types, compared to other vetch species. It is well adapted to low rainfall situations and selected for its improved winter growth and dry matter production. It also provides the added benefits of moderate drought tolerance while also being a highly efficient and effective nitrogen fixer. Mature plants form a dense canopy providing strong weed competition. Haymaker Plus is ideal as a break crop and is well suited for grazing, hay production or turned in as a green manure crop to improve soil health.

#### Key features

- Has greater total dry matter production than Namoi
- Very hard seeded (80-90%) for improved persistence
- Better adapted to light soils than other vetches
- More winter growth than Namoi
- Offers a disease break in cropping rotations
- Resistance to Spot, Rust and Ascochyta

#### Seeding rate

- 20-25kg/ha (pure); 7-12kg/ha (mixtures)

## Common Vetch (*Vicia sativa*)

### Morava NEW

Morava is a high performing 'common' vetch which is suitable for grazing, green manuring, making hay/silage and as a disease break in cereal farming rotations. Morava is soft seeded and produces high levels of dry matter while still providing high grain yields. Good disease resistance makes Morava the best vetch option for areas receiving greater than 300 mm annual rainfall.

#### Key features

- Resistant to rust and tolerant to ascochyta
- Soft seeded, non-shattering
- Improved soil health through increased nitrogen fixation
- High yield potential – 17% over Rasina in trials
- Replacement for current varieties in areas with average rainfall above 300 mm
- Suitable for green manuring and grazing
- Vigorous early plant growth and good grazing palatability

#### Seeding rate

- 25-30kg/ha (pure); 10-15kg/ha (mixtures)



Haymaker



Morava





Barenbrug's Yellow Jacket Technology is formulated with seed quality in mind. It has no biocides, no microplastic accumulation and is biodegradable. Strict quality control protocols are in place to ensure rhizobium survival and nodulation on coated legumes.

## Lucerne (*Medicago sativa*)

Lucerne is a perennial with a woody crown and an erect growth habit. It is suited to fertile, deep, well drained, neutral to alkaline soils. Its deep tap root can access moisture deep in the soil profile, providing extraordinary summer growth and drought tolerance. Careful management, including grazing control as well as weed and pest control, is usually required for a stand of lucerne to persist. Lucerne is mostly used as a perennial hay or fodder crop. It provides high quality forage that is readily saleable as hay or useable as a high protein addition to livestock diets. Because of the high value of the lucerne forage and its excellent summer production, lucerne is perfectly suited for irrigation. Lucerne may be grown as part of a mixed pasture sward, but the conditions must suit it. Rotational grazing is usually necessary to ensure its survival.

## Winter Active Lucerne

Winter active lucernes are the most versatile, providing good growth into late autumn and holding their quality longer than highly winter active varieties. Best suited to medium-term mixed farming situations that require grazing tolerance and the ability to make reasonable quality hay. They are ideal for irrigated or dryland production and are useful as a pure stand or as a perennial legume component in pasture blends for regions with 450-650 mm winter dominant rainfall. These lucernes also make excellent permanent summer forage crops in the high rainfall dairy regions because they provide feed over a longer period than summer brassicas without the same insect problems.



Lucerne



Scan for  
lucerne video



## BAR 7

BAR 7 (SARDI 7 Series 2) is the next generation winter active lucerne. It is even more versatile, broadly adapted and persistent than Sardi 7, offering a greater performance in cold, wet environments where older varieties can struggle. It has been bred specifically to perform well in both dry land and irrigated systems. It offers superior performance where persistent, high-producing lucerne stands are required and in grazing situations where winter produced feed can be utilised.

### Key features

- Dormancy 7 variety
- High yielding
- Multipurpose
- Excellent persistence
- Strong pest and disease resistance
- Good grazing tolerance
- Improved performance in cold, wet environments
- Well suited to grazing and hay production with a broad crown and high leaf to stem ratio
- Better sustainability than other 7 dormancy lucerne (5-8 years)



BAR 7

***BAR 7 is the next generation winter active dormancy lucerne, its more versatile, more adaptable and more sustainable than other dormancy 7 varieties in the market today.***

## Highly Winter Active Lucerne

Highly winter active varieties are bred for late autumn/early winter planting and have excellent seedling vigour for oversowing. They have a more upright crown, erect growth habit and are well suited to a 2 - 4 year rotation system in 350 - 500 mm rainfall zones under permanent irrigation. They provide maximum growth from winter dominant growing season rainfall. Some of the newer Australian-bred varieties in this group have increased grazing tolerance because they were selected from and developed for broadacre grazing systems.

### Seeding rate

- 20-30kg/ha (irrigation)



Lucerne





## BAR ST

BAR ST is a highly winter active variety with a dormancy rating of 9. Developed with elite germplasm from the USA and Argentina, it provides excellent forage quality, performance and persistence. BAR ST offers improved salt tolerance for germinating seedlings over other traditional lucerne varieties. This allows for potentially better establishment in regions where moderate salt levels can limit plant establishment.

### Key Features

- Dormancy 9 variety
- Salt tolerance demonstrated in establishing lucerne
- Strong plant vigour and establishment
- Highly resistant to fusarium wilt, phytophthora root rot and pea aphid
- Resistant to anthracnose
- Soil preference: light to medium and heavy, deep, well drained soils
- Suitable for hay, grazing and cut and carry

## BarALFA 10

Perfectly suited to cut and carry operations, BarALFA 10 is a high performing, highly winter active variety bred from elite parent material from Australia and the USA. It demonstrates extremely fast establishment and provides high year-round forage yield, which means it can be adapted to various farming systems that demand high performance products.



BarALFA 10

### Key features

- Dormancy 10 variety
- High yield potential, exceptional trial results in AUS, US and SA trials
- Bred for improved persistence and productivity over traditional dormancy 10 varieties
- Good all-round pest and disease resistance/ tolerance
- Very high yielding in desert environments
- Superior establishment and reduced time to first cut compared to older varieties
- BarALFA 10 had a 35% higher first cut over older varieties in US trials



## Select the most suitable variety for your needs



\*Experimental variety still under evaluation

## Seeding Rates

Rainfall	Kg/ha (uncoated)	Kg/ha (coated)	Minimum plant/m <sup>2</sup> (after first summer)
350-450mm	3 – 6	4 - 8	15 – 40
450-600mm	5 – 8	6 – 11	50 – 70
600-800mm	8 – 15	11 – 20	80 – 130
800mm + / Irrigation	20 – 25	26 - 32	130 – 150

## Utilization

### As pasture mix

When planting lucerne in southern regions in a pasture mixture, establish it with a low vigour grass such as a winter active fescue or cocksfoot. It may be better to establish the lucerne first and introduce the companion varieties a season or two later, especially for producers unfamiliar with lucerne management. Lucerne can be oversown with annual ryegrass or oats as it starts to thin out towards the end of its lifecycle.

### Cutting

Cutting lucerne needs to be done at or a bit before 10% flowering but note the height of new shoots at the base of the crop and ensure that they are not damaged as they will be the next crop (best method of assessing cutting timing). Conditioner rollers are useful for quick drying. Double conditioning has been used. Re-cutting depends on seasonality, climate and dormancy.

Dormancy	Days (potential interval under ideal summer growing conditions)
Winter dormant	30 - 34 days
Winter active	27 - 30 days
Highly winter active	25 days





## Faba Bean (*Vicia faba*)

### Fiesta

The Faba bean plant is tall, erect and multi-stemmed from basal branches. It has a well-developed taproot which produces an extensive fibrous root system. Plants can flower profusely, and flowering may last for up to 5 weeks, depending on soil moisture and air temperature. However, as few as 10-20% of flowers produce pods as flowers require cross-pollination.

Faba bean is best suited to well-structured soils in medium to higher rainfall districts. It tolerates some waterlogging, competes well with a range of weeds and is relatively easy to harvest. Faba bean roots need to be inoculated with the appropriate strain of rhizobia (*Rhizobium leguminosarum*), allowing it to fix nitrogen in the soil. This bacterium will colonise the plants roots, stimulating root nodule development. It should be inoculated when the faba beans are being grown in a field for the first time or where they have not been grown in the past 4 years. Faba beans are used primarily as a cover crop, but it can also be used for silage and pulse production.



Fiesta

### Seeding rate

- 130-150kg/ha (pure)



Bitter Lupines

## Narrow Leaf Lupines (*Lupinus angustifolius*)

### Sweet and Bitter Lupines

Sweet lupines are used as a supplement in poultry, ostrich, dairy, beef, horse, sheep and goat rations. It contains approximately 32% protein and 10% oil and has an energy value of approximately 11 MJ/kg. Sweet lupines are especially sensitive to high temperatures during flowering and pod formation and are therefore planted during winter. Legumes such as lupines fix nitrogen, therefore one can expect large grains crop yields if they are planted in soil that was planted to lupines the previous season. Lupines prefer full sun and grows best in sandy soils with a slightly acidic pH.

- Prefers sandy, well drained soils
- Does not tolerate waterlogged soil
- Mainly cultivated for seed production
- Ideal as a cover crop or green manure
- Bitter lupines are more vegetative than sweet lupines
- Not recommended for grazing
- Must be inoculated for effective nitrogen fixing

### Seeding rate

- 50-80kg/ha (pure)



Sweet Lupines



## Forage Peas (*Pisum sativum*)

### Arvika

Arvika is the most famous worldwide variety of forage pea. It is suited for producing fresh fodder, hay, and can also be used as a cover crop or green manure. High protein content ensures good feeding quality in most fodder systems. Arvika also enriches the soil with nitrogen harvested from the air and is ideal for crop rotation.

The ideal planting time is from the end of April to mid-June but is moisture dependant. Forage Peas can be susceptible to leaf and stem disease with early establishments.

#### Seeding rate

- 100-120kg/ha (pure)

#### Key features

- Grows well with most forage cereals like oats, triticale and barley
- Rapid establishment
- Adaptable to most well drained soil types
- Medium-late flowering variety
- High quality and palatability forage
- Good disease resistance

*Forage Peas are an important component of autumn and winter forage and cover crop mixtures with cereals.*



Arvika



Exceptional nodulation

## Grain Peas (*Pisum sativum*)

### Gambit

#### Key features

- Early maturing – approximately 72 days to flowering (white flowers)
- Higher grain yield than Arvika
- Good lodging resistance
- A tall variety, making it easier to harvest
- Well balanced health (exceeding most varieties)
- High grain protein content (23.2%)
- Commonly used for grain production

#### Seeding rate

- 100-120kg/ha (pure)



Gambit





## Birdsfoot Trefoil (*Lotus corniculatus*)

### Soa Gabriel

*Lotus corniculatus* is a high quality, non-bloating, perennial legume adapted to acid and waterlogged soils. Birdsfoot trefoil is most successful in areas where white clover is unable to persist due to an extended summer drought and Lucerne is unable to be productive due to low soil pH and/or winter waterlogging. It is used primarily in combination with cocksfoot on acid soils and can be used with fescue on waterlogged soils. It is cold and frost tolerant and requires a rainfall of 600 mm. Birdsfoot can be cut or grazed and will spread if it is allowed to set seed.

#### Seeding rate

- 6-10kg/ha (pure); 2-4kg/ha (mixtures)



Birdsfoot Trefoil

## Sainfoin (*Onobrychis viciifolia*)

Sainfoin is an introduced, non-bloating legume that can be cut as hay and used in a grass-legume pasture mixture or as a monoculture. Sainfoin is highly palatable to sheep and cattle. It is drought tolerant. Sainfoin has deep, penetrating roots, allowing it to draw moisture from a great depth. Being leguminous (able to fix N) it can leave huge quantities of N in the soil, making it ideal for the next crop in the rotation. It also needs no nitrogen fertiliser. Sainfoin provides bloat-free forage for ruminants which is a real advantage over other legumes such as clovers and lucerne which can cause bloat. Only a relatively small quantity of sainfoin in the diet is required to prevent bloat. Sainfoin is palatable to horses, sheep, cattle, goats and all commonly farmed animals.

#### Seeding rate

- 65-90 kg/ha



Sainfoin

## Poor Man's Lucerne (*Sericea lespedeza*)

*Sericea lespedeza* is a drought-tolerant, non-bloating perennial legume; it is resistant to diseases and is rarely attacked by insects; and mature plants are quite competitive with grasses. It is much more tolerant of soil acidity than most other legumes and is also very tolerant of low fertility. Forage yields of sericea are good, and forage quality is better than most warm season perennial grasses. It is a surprisingly economical forage crop to grow due to the fact that it does not require any nitrogen fertilizer. It has also been well documented that sericea is an excellent soil builder. Sericea is a deep-rooted perennial that also does well on shallow soils with drainage restrictions. Lespedeza will tolerate lower pH (more acid) soils than clover. Sericea lespedeza is normally planted in mid-summer.

#### Seeding rate

- 15-25kg/ha (pure)



Poor Man's Lucerne



# Sweet Clover (*Melilotus alba*)

*Melilotus alba* is a perennial legume sometimes grown for forage. It is well adapted to a wide range of soils, but not acidic soils. Sweet white clover is tolerant of alkaline and saline soils. It is characterised by a rapid growth rate, which slows down after defoliation, and its upright growth habit.

## Management

A well-cultivated, uniform and firm seed bed is required for good results. Seed is usually drilled or broadcasted. The optimum planting depth is 15-20 mm with good seed-soil contact. It has a high nutritive value during its vegetative growth stage when grazed, at its pre-flowering stage for silage, and at its early-flowering stage for hay. It is favoured for honey production and for its nitrogen fixing ability while preparing agricultural soil for future crops.

## Seeding rate

- 9-12kg/ha (pure); 4-5kg/ha (mixtures)



Sweet Clover

# Sunn Hemp (*Crotalaria juncea*)

Sunn hemp is an annual cover crop that can increase organic matter, fix nitrogen, grows in low fertility sandy soils, and does not harbor nematodes. It has been used extensively as a soil improvement or green manure crop in the tropics because of its ability to produce large amounts of biomass in as little as 60 to 90 days. Because of this, it has the potential to build organic matter levels and sequester carbon in a short period of time.

## Key features

- Rapid growth and relatively short growing season requirement
- It grows best on well-drained soils with a pH from 5 to 7.5
- Used as a cover crop, sunn hemp can improve soil properties, reduce soil erosion, conserve soil water, and recycle nutrients
- Suited to the warm summer rainfall areas (or irrigation)
- Plant as soon as soil temperatures are higher than 16°C (October – November)



Black Sunn Hemp

## Seeding rate

- 40-50kg/ha (pure)

Black Sun Hemp	Red Sun Hemp
Fast establishment	Medium-fast establishment
Short growing season	Long growing season
High in fibre content making it more difficult to manage as a green manure	Low in fibre, fast deterioration as a green manure
Seeding rate @ 50kg/ha	Seeding rate @ 20kg/ha





## Cowpea (*Vigna unguiculata*)

Cowpea is an annual summer legume, ideal as a high-quality summer forage for sheep and cattle, allowing multiple grazing opportunities throughout the growing season. Cowpea is a fast growing and versatile legume providing good grazing, silage and hay for producers.

### Key features

- High quality forage for summer finishing feed
- Improved stem and root rot resistance
- Great source of N-fixation in summer rotation
- Nil prussic acid poisoning issues
- Can be used as a companion crop with millets and forage sorghums
- Excellent soil improvement as green manure crop

### Seeding rate

- 15-20kg/ha (marginal soil); 25-30kg/ha (fertile soil)

### Bets Wit

- Bred as a superior, more prostrate, forage type
- Its prostrate growth habit withstands harder grazing and provides multiple grazing opportunities
- White-cream coloured seed
- Red-brown coloured seed

## Dolichos (*Lablab purpureus*)

Dolichos, otherwise known as lablab, is one of the most ancient crops among cultivated plants. It is a late maturing, vigorous, herbaceous, annual or short-lived perennial legume. It has a twining growth habit, primarily used as a forage or fodder crop. It is suited for areas with average rainfall of 650 mm, although it is very drought tolerant once established. Well drained soils are essential for good growth, being highly susceptible to waterlogging. Dolichos can be sown in mixtures with millet and forage sorghums. In pure swards it generally produces 6-10ton/ha of herbage.

### Key features

- High forage quality
- Generally higher producing than cowpeas
- Can be utilized by grazing or making hay
- Restores soil fertility as a cover crop (green manure)
- Good insect and disease resistance
- Poor frost tolerance

### Seeding rate

- 15-30kg/ha (pure)



Cowpea



Dolichos

### Highworth

- Shorter growing season
- More of an upright growth habit than Rongai - easier to harvest

### Rongai

- Long growing season
- Vigorous twining growth habit



# Inoculation

We recommend inoculating legumes before planting. Rhizobium bacteria are important because they convert atmospheric nitrogen to plant available nitrogen (nitrogen fixation).

## Why inoculate legumes?

- It allows legumes to fix their own nitrogen, creating more biomass and a better quality (especially protein content) pasture.
- As a cover crop where no or only some of the material is removed it can increase nitrogen availability for the follow up crop or perennial crop (vineyards and orchards) already present.
- Less inorganic nitrogen needed, reducing soil acidification and nitrogen leaching.
- New strains are much more effective and efficient. Natural occurring Rhizobium regularly inoculate secondary roots, where if you inoculate with Rhizobium, it normally inoculates the primary root, leading to more nitrogen being fixed.
- The cost of inoculants is easily compensated for by all the benefits.

## Nitrogen fixing potential of legumes

Legume DM typically contains 1.5-4% Nitrogen. If it contains less than 1.5% N due to poor nodulation, the legume supplies very little or no plant available nitrogen (PAN) when it decomposes. Good nodulation, using the correct Rhizobium, can lead to DM containing 3-4% N, which normally leads to PAN of 15-30 kg/ton DM. To put this in perspective, for 4 ton of DM/ha produced 60-120kg/ha of N can be fixed. Do however keep in mind that the amount of nitrogen fixed, depends on various environmental conditions and management practices. Not all the nitrogen fixed will be available for the follow-up crops to use seeing that some is lost via leaching, denitrification or if the plant material is removed via harvesting.

## How to apply liquid inoculants

1. Place the seed on a cement floor, in a mixing container or a cement mixer
2. Pour the inoculant over the seed
3. Mix until all the seed is covered
4. Let it dry for about 1 to 2 hours
5. For the best results, plant the seed on the same day



**Rizo-Liq Peas & Vetch** – Forage peas and faba beans (50kg seed/packet); vetch (25kg seed/packet)

**Rizo-Liq Lucerne** – Lucerne, barrel medics (*truncatula*) and sweet clover (*melilotus*) (25kg seed/packet)

**Rizo-Liq Lupins & Serradella** – Lupines (50kg seed/packet); serradella (25kg seed/packet)

**Rizo-Liq Clover** – White-, red-, subterranean- and other clovers (25kg seed/packet)

**Rizo-Liq Polymorpha** - Burr medics (*polymorpha*) (25kg seed/packet)

**Rizo-Liq Groundnut & Cowpea** – Cowpeas, dolichos, sunn hemp, groundnuts, velvet beans, mung beans and pigeon peas (50kg seed/packet)





# Herbs and Brassicas

 **BARENBRUG**





# Herbs and Brassicas

Chicory  
Plantain  
Turnips  
Radish  
Rape

Forage brassicas are highly nutritious, fast-growing crops suitable for livestock grazing. Both stems and roots are nutritious, with high digestibility (85-95%). However, precautions are needed due to their low fiber content, resembling concentrate feeding. They should not exceed two-thirds of livestock diets, with the rest from grass hay or pasture. Brassicas contain low glucosinolates, but proper grass forage supplementation prevents health issues.

Excessive nitrogen and potassium fertilization should be avoided. To prevent off-flavors in milk, some dairymen limit brassica consumption before milking or feed rapes to lactating dairy animals with grass roughage. Brassicas provide high-quality forage during the summer or extend grazing into late fall-early winter.





## Chicory (*Cichorium intybus*)

### Commander

Commander is a winter active chicory, providing great year-round growth, improved root rot resistance and excellent grazing. Chicory is a persistent leafy herb lasting 2-3 years with a large tap root. It performs best in fertile, free draining soils in regions of greater than 550 mm rainfall. Chicory requires a well-prepared seed bed and soil temperatures of greater than 10°C for successful establishment.

Broadleaf weeds can be difficult to control in chicory stands, therefore the paddock should be free of broadleaf weeds prior to seeding and a pre-emergent herbicide should be used. Chicory should be rotationally grazed on a 4-6 week rotation and will require added nitrogen for maximum performance.

#### Key features

- High quality forage option for dairy, beef and sheep
- Leafy and erect growth habit for easier grazing
- Performs year-round, including winter
- Fast establishment and regrowth after grazing
- Excellent drought tolerance and root rot resistance
- Resistant to diamond-back moth & cabbage butterfly
- Low crown gives good persistence over 2 to 3 years

#### Combined Lucerne and Chicory Pasture

- Chicory may contribute to weed control by providing good ground cover
- Lucerne and chicory have complementary growth habits
- Lucerne is a legume providing nitrogen back into the soil
- Chicory is a leafy, deep rooted perennial herb using nitrogen
- Chicory in the pasture may help reduce worm burden and red gut in animals

#### Seeding rate

- 6-8kg/ha (pure); 1-2kg/ha (mixtures)



Barenbrug's Yellow Jacket Technology is formulated with seed quality in mind. It has no biocides, no microplastic accumulation and is biodegradable. Strict quality control protocols are in place to ensure rhizobium survival and nodulation on coated legumes.



Commander Chicory/Grass mix



Commander Chicory and Red Clover



Commander Chicory, Lucerne and Fescue



## Plantain (*Plantago*)

### Captain

Captain is a narrow-leaved, winter active plantain variety. Persistence trialling has shown Captain performs well as a component of a perennial pasture for the first 3 years. Captain has a very erect growth habit with narrow leaves, which complements the growth habit of ryegrass and clovers, making it an exceptional fit for multi-species pastures.

#### Key features

- Winter active
- Narrow leaved erect growth habit
- Overall DM yield similar to Tonic
- Suited to dairy, sheep and beef systems
- Great compatibility with ryegrass

#### Seeding rate

- 8-10kg/ha (pure); 2-3kg/ha (mixtures)



Plantain

## Forage Turnip (*Brassica rapa*)

Within the Brassicas family, turnips are the quickest species to establish. Turnips have the potential of being grazed multiple times. The first grazing however, will be the most important one. Both sheep and cattle can graze turnips. It is important not to graze too large of an area at once. Strip-grazing prevents both yield and quality losses due to trampling and polluting. It is also important not to overfeed the cattle when they are allowed to graze the turnips at first. Extremely high intake of turnips (and other brassicas) can cause animal health problems. Therefore, cattle should be allowed to adjust to the change of diet. Supplementing with other forages that contain less protein and sugars can prevent problems.

#### Seeding rate

- 3-5kg/ha (increased leaf production, medium to large bulb size)
- 2-3kg/ha (increased bulb size)



Forage Turnip





## Barkant

Barkant is a truly improved forage turnip variety. Bred for leaf production, it out yields most other turnip varieties available. A very vigorous diploid turnip variety with a purple tankard root, Barkant turnips have a high bulb yield, and good top growth. A high sugar content provides winter-hardiness and increased palatability.

### Key features

- Summer-type forage turnip
- Good leaf & root yield
- Ideal for grazing
- High energy feed
- High sugar & DM content
- Multiple harvest potential

### Planting and establishment

Barkant requires good soil drainage and a pH of between 5.3 and 7.5. Seed should be planted in a firm, moist, seedbed. Barkant can be broadcasted or drilled. It is very important not to plant the seed too deep. Brassicas should be planted no longer than 2 consecutive years to prevent disease and pest problems. Ideally planted from October to November.

## Mammoth Purple Top (MTP)

Widely adapted, older variety, hard flesh turnip, high yielding, suited to sheep, dairy and beef in drier areas. Both leaf and bulbs are utilised by grazing animals. The turnip bulb is a large storage organ that develops in the first year. Regrowth is possible from a light first grazing if the leaf growing points attached to the bulb are not damaged.

### Key features

- Winter-type forage turnip
- 12-14 weeks to maturity
- Most widely used variety
- Produces a large round bulb



Barkant



Turnip Bulbs



Mammoth Purple Top





## Radish (*Raphanus sativus*)

Radish is a fodder/green manure crop that breaks through hard, compacted soil layers that have broken many a gardener's back. It mechanically opens channels for water and roots to penetrate. Softening soils is not the only reason to use radish as a cover between fall and spring. Its deep roots recycle the previous year's nitrogen, catching it before it leaches out. Seeing that Radish decomposes so quickly in areas where its lifecycle ends naturally, nitrogen is released in time for the next season's use.

### Establishment

The land should be cleared of weeds before soil preparation, especially perennial weeds. A fine seedbed is essential before broadcasting or drilling the seeds. The planting depth should not exceed 2 cm and the soil should be kept moist to help with germination. Autumn plantings are recommended for the best results, but it can also be planted in Spring.

### Utilization

Fodder Radish is one of the main components in our COVERGRAZE™ systems due to its versatility. It has the ability to produce high quality spring feed, but also has all the benefits of a green manure cover crop. It should be cut as green manure before flowering to ensure softer stems, allowing quicker decomposition, retaining more beneficial nutrients and are easier to incorporate into the soil.



Radish

### Seeding rate

- 3-6kg/ha (pure); 1-2kg/ha (mixtures)





## Sunday NEW

When improved soil health is the goal, Sunday **Oil Seed Radish** is the perfect component to form part of your cover crop system.

- Excellent first frost tolerance
- Long vegetative growth phase
- Low pruning effort due to late flowering and low growth form
- Combats soil erosion with good nutrient and soil moisture conservation during winter
- Drought tolerant
- Good weed suppressor
- Suitable to use as bio fumigation, reduction of Beet Cyst Nematodes (*Heterodera schachtii*)
- Green manure, humus formation and mulch sowing
- Highly suited to crop rotation with maize, cereals, sugar beets and legumes, with a lesser extend with oilseed rape, potatoes and other intensive crops



Fodder Radish

## Nooitgedacht

Nooitgedacht fodder radish, commonly known as **Japanese Radish**, is useful as a late autumn/early winter feed in the cooler eastern areas of South Africa. It may be used in the drier western areas but may require supplementary irrigation. It can be used as a fodder bank or source to supplement temperate and tropical pastures.

- Very good cold and drought tolerance
- Best suited to sandy and loam soils
- Time of establishment: normally January/February
- Can be planted in December in the cooler eastern areas
- Shows good reaction to phosphate and potassium fertilizer
- Excellent rotational crop for maize systems
- Can be used as stand over feed for the winter



Japanese Radish

## Daikon

Daikon **Drilling Radish** has the ability to produce a large taproot and penetrate compacted soil layers in an effort to increase soil aeration, water infiltration, decrease compaction and provide better rooting depth opportunities to successive crops. These type of tillage roots do their work right where it is needed, in the soil. It tills and aerates to improve soil structure as it grows.

When its lifecycle ends, its roots add organic matter to the soil in massive amounts, with minimal loss and no mechanical digging required. Considering the cash crop that will be planted next is the first step in developing an effective cover crop management plan. Tillage radish is best suited to proceed summer crops. Ideally the following cash crop will be no tilled into the material of the terminated tillage radish.



Drilling Radish



# Forage Rape (*Brassica napus*)

## Interval

Interval rape is a rape-kale cross that is extremely vigorous, fast establishing and high-yielding. Interval rape has shown a very good leaf to stem ratio compared to other varieties on the market. Crops of Interval rape have measured 19% CP (crude protein) and 13.4 MJ/kg DM (energy). Excellent regrowth after grazing can be obtained through good management practices.

### Key features

- Tall type
- High quality forage
- Good regrowth – two grazings are possible
- Flexible – summer or winter crop
- Good drought tolerance
- Good winter hardiness and frost tolerance

### Using Interval

- Sowing date: Oct - Nov / Jan - Mar
- Maturity date: 90 -120 days
- Typical yield: Summer: 7-10 t DM/ha; Winter: 4-6 t DM/ha
- ME: 10-11 MJ/kg DM

## Jupiter

For use as fodder, green manure and water protection

### Key features

- Cheap feed to relieve the main fodder production and bridging feed gaps - very suitable for grazing
- High sugar content with low nitrate content provides good fodder quality and promotes digestibility
- Jupiter has a very fast vegetative development and is suitable for late sowing
- Nitrogen is absorbed quickly, biologically bound during winter and so conserved for the following crop
- Dense leaves - suppress weeds and protect against wind and water erosion
- Intensive root system actively promotes soil life and improves the soil structure
- Good winter hardiness prevents nutrient from leaching - effective water protection measures



Interval

### Seeding rate

- 4-5kg/ha (pure); 1-2kg/ha (mixtures)



**Sowing time:** Jan - Apr

### Seeding rate

- 4-5kg/ha (pure); 1-2kg/ha (mixtures)

**Fills the summer feed gap!**





## Brassica Management

### Seedbed

- Aim: fine, firm, and moist seedbed
- Control weeds: cultivation, pre-emergent spray
- Bury turf & past crop residues
- Depth: 1 - 1.5 cm
- Broadcast seeding rate is higher than drilling
- Seed-soil contact is important
- Consolidation: rolling is very important
- The correct plant population is critical for a good yield

### Fertility – Overview

- Brassicas remove high levels of nutrients
- Every crop is different – fertilise based on expected crop yield and base fertility level
- Often “poor” paddocks – lift base levels for new pasture
- Nitrogen: Responds strongly to it, driving yield
- Phosphorus: critical for establishment but is relatively immobile, therefore band placing gives the best response
- Boron: mainly bulb crops, avoid seed burn
- pH: preferably over 5.6
- Do a soil test!







### Weeds

- Have significant effect on yield
- Weed free seed bed is ideal for establishment
- Pre-emergent sprays – rainfall for activation
- Post-emergent sprays – spray when weeds are small
- Healthy fast-growing crops can out compete weeds

### Pests

- Can cause major damage, especially at establishment
- Check every few days around establishment (springtails), then weekly
- Insecticides can be applied as a spray after emergence, or as a seed treatment

### Grazing Management

- It takes approximately 4-6 weeks for rumen bacteria to adjust
- Introduce crops slowly – build intake over 10 days

- Avoid gorging: brassicas are consumed quick and easy, therefore do not allow hungry animals access to large amounts
- Feed fibre before giving access to brassicas
- Frosted crops can cause bloat and cold forage causes a decrease in body temperature and an increase in energy requirement
- Provide plenty of water: a lack of water results in lower intake
- Nitrate poisoning due to late N application - allow time to adjust, reduce rate of intake
- Shift fences at least once a day for less trampling/wastage

### Crop Measuring

- If you don't measure it – how can you manage it?
- Yield (kgDM/ha) = average fresh weight/m<sup>2</sup> (kg) x (DM%100) x 10,000
- DM % = dry weight (g) / wet weight (g) x 100





# Agronomy Crops

 **BARENBRUG**





# Agronomy Crops

**Black Oats**

**Barley**

**Forage Oats**

**Triticale**

**Forage Rye**

Agronomy is the application of plant and soil science to crop production. As a science it considers how to grow crops effectively and profitably while conserving natural resources and protecting the environment. Agronomy emphasizes staple food crops, such as maize, beans, wheat and oil seeds like canola which are produced on a large scale and represent the foundation of our human food supply. Forage plants and hay crops are also considered agronomic crops and are the feed base for the ruminant livestock industry.





## Black Oats (*Avena strigosa*)

### Barsaia Plus NEW

New and improved black oats variety.

#### Key features

- Exceptional biomass yield
- High disease tolerance
- Medium to late growing season

#### Key features

- Adapted to a wide range of soil types
- Excellent weed suppression
- Biomass production and green manuring

#### Seeding rate

- 50-60kg/ha

## Barley (*Hordeum vulgare*)

Barley is an annual cereal that is often used in semiarid areas because it is more drought tolerant than other cereals. It does not do well in humid areas where there are many problems with disease. Therefore, barley is a crop that is best adapted to cooler, drier areas. For the best quality feed and good regrowth, it should be cut or grazed at a 30-40 cm height. After each cut the crop should be fertilized to ensure good quality regrowth. Barley is widely used as a livestock feed.

## Moby

Moby is an early maturing, 6 row, awnless **Forage Barley** with excellent winter growth and rapid establishment. Leaf size varies according to environmental conditions and is more comparable with oat varieties than traditional barley types. Moby can tolerate multiple grazings until the production of the first node. Being winter active, Moby offers an extended planting window, from mid-autumn to mid-winter, compared to forage oats.

#### Key features

- Developed for high vegetative dry matter production
- Very fast establishing variety
- Exhibits good cold tolerance compared to other varieties
- Excellent winter growth

#### Seeding rate

- 60kg/ha



Black Oats



SVG13 (left) & Moby (right)





## Dictator 2 NEW

Dictator 2 is a high-yielding **Forage Barley**, awnless 2-row barley, ideal for grazing, silage, and hay production.

### Key features

- 15-20% higher yielding than older varieties
- Quick autumn feed establishment
- Superior regrowth after grazing
- Less prone to lodging
- Improved palatability and digestibility
- Disease Resistance: Strong against leaf rust, powdery mildew, and more
- Waterlogging Tolerance: Withstands short periods of waterlogging

### Seeding rate

- Marginal dryland: 40 kg/ha; Good dryland: 60 kg/ha; High rainfall/irrigated: 85-100 kg/ha
- Grazing: Start at 300mm height, maintain 75-100mm post-grazing
- Fertilization: Use nitrogen to boost recovery and yield
- Harvest: Ideal at milky-dough to dough stage for silage/hay<sup>7</sup>



Dictator 2





## Barforce

Barforce **Silage Barley** is an excellent silage option due to its high grain yield that increases the quality. Its quick establishment and dense growth habit make it an excellent cover crop for weed suppression. Barforce has a medium growing season, making it an ideal option for lower rainfall regions.

### Key features

- Vigorous growth throughout the season
- Higher grain yield, but less vegetative biomass than forage barley
- Flexible establishment due to its cold tolerance
- Very good weed suppression
- Good drought tolerance



Barforce

### Seeding rate

- 70kg/ha

## Forage Oats (*Avena sativa*)

Forage oats is a winter forage crop that is very popular for its ability to produce good-quality feed when most pastures are dormant. Many farmers rely on oats to fatten livestock during the period from autumn to early spring. It is a fast-establishing autumn/winter growing fodder crop with a high leaf to stem ratio resulting in a high feed value. It is most popular for silage, hay and grazing. The ideal planting time is from March to May.

## Wizard

Wizard is one of the latest releases from the leading forage development partnership between the Queensland Department of Agriculture and Barenbrug Australia. Wizard presents a significant improvement in yield over other forage oats in the market. Wizard has an erect early growth habit with a medium plant height and good tillering ability. Wizard's leaf and stem thickness is slightly finer, containing less lignin. It also tends to recover better after cutting and grazing than other varieties. Wizard will provide growers with a high yielding forage option, with medium/ late maturity and excellent recovery in winter.

### Key features

- Sets a new benchmark for yield in forage oats
- Good early growth, making it quick to initial grazing
- Excellent recovery
- Medium/late maturity
- Very good leaf rust resistance
- Excellent frost tolerance



Wizard

### Seeding rate

- 50-60kg/ha (pure)



### Key features

- Sets a new benchmark for yield in forage oats
- Good early growth, making it quick to initial grazing
- Excellent recovery
- Medium/late maturity
- Very good leaf rust resistance
- Excellent frost tolerance

## Triticale (*Triticosecale*)

Triticale has been developed to incorporate the high yield potential and quality of wheat with the adaptability of rye, allowing it to be adapted to a wide range of soil types and environments. Triticale has an aggressive root system that binds light soils better than wheat, barley and oats. It is used to produce silage towards its milky dough stage and is also an excellent choice for grain production, which can be used as animal feed. Grazing normally occurs during the first 40 days after emergence. Triticale is primarily a source of energy, has a moderate protein content and has a high starch and other carbohydrate content. It is also a popular cover crop for vineyards and orchards, enhancing moisture retention and weed suppression.

### Seeding rate

- 120-140kg/ha

## US 2019

US 2019 is our latest triticale variety from Stellenbosch University's breeding program. It is a multiuse variety suitable for producing forage, grain, hay and silage.

### Key features

- Easier harvesting compared to older triticale varieties
- Above average hectolitre mass (78kg/hl) compared to older triticale varieties
- Resistant to leaf rust, stem rust, stripe rust and Russian wheat aphid
- Reduced fertilizer requirement while maintaining high protein levels in combination with an above average starch content
- Excellent adaptation to the entire Western Cape production area
- Long growing season, allowing it to fully utilise available moisture
- Medium plant height (typically 100 – 110 cm)
- Lower seeding rate required while maintaining excellent biomass



Triticale



US 2019





## Forage Rye (*Secale cereale*)

### Powergreen NEW

Powergreen is a true winter type forage rye, that is exceptional grazing for filling the late winter, early spring fodder gap in colder areas. Well suited for intercropping with maize. The ultra-long growth can provide grazing until spring and even early summer.

#### Key features

- Broad leaves with high dry matter yields
- High raw protein content
- Low tendency to lodging
- Combination of rapid tillering in autumn with early growth in spring
- Extensive root system, can break heavy soils and improve soil structure
- Good weed suppressor
- Best crop at preventing nitrogen leaching during winter
- In comparison with other small grains, Powergreen is more cold tolerant
- Excellent gap filler for grazing in August/September, in colder areas

#### Establishment requirements

- Establishment time frame depended on pasture application and area
- Intercropping with maize – establish January/February
- Establish February – April for prolonged grazing
- Slow initial growth, graze ready in 12 – 13 weeks, with good re-growth after
- It suits most soils and copes especially well with heavy clay soils

### Barpower

Barpower is a unique rye variety, bred for the forage market. It is more leafy than normal rye, having a higher leaf to stem ratio. Barpower has a slightly longer growing season than normal rye, allowing a higher yield potential. This versatile variety can be used for grazing, hay, silage as well as a grain feed.

#### Key features

- Densely tillered and very leafy - more prostrate growth habit
- Very quick establishment
- Proved to be highly palatable in grazing trials
- The grain is of great value to ruminants and has a crude protein of 10-13%
- Offers farmers greater fodder flow flexibility
- Ideal in "COVERGRAZE™" mixtures
- Drought tolerant and widely adapted

#### Seeding rate

- 50-60kg/ha



Powergreen

#### Seeding rate

- 50 – 60kg/ha under irrigation and  
25 – 40kg/ha under dryland



Barpower

#### Management

- Do not plant too early, especially in warmer areas (April – Mei)
- Planting can start in March in cooler areas
- Early grazing will result in very good regrowth (30-35 cm)
- Rotational grazing for best results
- Often used as a nurse crop with early established ryegrass to increase total dry matter content





# Pollinators

 **BARENBRUG**





# Pollinators

**Phacelia**

**Mustards**

**Flax**

**Buckwheat**

**Cilantro**

Beneficial insects such as natural predators and pollinators benefit from nectar and pollen provided by flowering cover crops. Differences in flower morphology, such as shape, size and colour, will influence the type of beneficial insects attracted to it. A variety of flower morphologies provide resources to a diversity of beneficial insects.

- Flat, open flowers – pollen and nectar available to all shape and sizes of bees and predators
- Narrow, closed flowers – difficult for small bees and parasitic wasps to enter and obtain nectar and pollen



## Phacelia (*Tanacetifolia*)

Stala variety is a cover crop and bee forage, rated among the top 20 honey producing flowers. It is comparable to buckwheat in many ways. Buckwheat germinates more rapidly, especially at higher temperatures, and phacelia is more tolerant of cold and drought. It grows well in dry soil. Phacelia has rapid establishment and is quick to flower (6-8 weeks) and flowers for up to 8 weeks. It reduces soil erosion and improves soil structure.

### Utilization

- Use as a fall/winter catch crop/mulch. Produces abundant biomass and does a good job of catching excess Ca and nitrates before they leach into the ground water. Appropriate when it will be followed by a vigorous cash crop, like potatoes, in early spring.
- Ideal as a catch crop for oilseed rotations (non-host for club root disease)
- Intercrop option with maize and sugar beet (data shows phacelia reduces the population of the sugar beet nematode, *Heterodera schachtii*).
- Cover crop in vineyards and apple orchards (beneficial insects).
- Forage option in COVERGRAZE™ mixtures.
- Excellent pollinator value

### Seeding rate

- 5-8kg/ha

## White Mustard (*Sinapis alba*)

### Sirene NEW

A mid-late white mustard, 1st class of resistance to beet cyst nematodes

- High biomass yield - tall plants
- Very good lodging resistance
- Green mass yield potential – 21.6 (20.5-22.8) t/ha
- Dry mass yield potential – 4.0 (3.9-4.1) t/ha
- Content of dry matter – 19.5 (17.1-21.8) %
- Flowering time – medium
- Weight of 1000 seeds – 7 g
- Beet nematodes:
- Attack index – 0.54
- Resistance index – 98.73
- Class H1 (strongly reduces amount of beet nematodes)

### Seeding rate

- Recommended sowing rate: 8-12 kg/ha
- Recommended sowing rate when growing for green manure: 15-20 kg/ha



Phacelia

**Primary purpose:**  
**Attracting pollinators**  
**and predators of pest insects!**



Venice





## Brown Mustard (*Brassica juncea*)

### Scala

Scala has been selected for bio fumigation. After the bruising and processing of the crop, the active substances are converted into gases that are toxic to a large number of soil organisms. Bio fumigation is mainly aimed at combating soil fungi, such as brown rot in potatoes. Seed should be sown in very early spring for spring use and in the autumn for winter use. Brown mustard requires a good sandy loamy soil, with adequate N; P; K; S to ensure rapid establishment. This crop should not follow other Brassica crops in rotation. For disease control, it is best grown once every 3–4 years.

### Key features

- Natural bio-fumigant of root-knot nematode
- Reduces soil crusting
- Improves soil infiltration
- Increases organic matter and the subsequent increase in beneficial microflora and microfauna
- Reduces effects of bacterial wilt on successive vegetable crops
- High pollinator value

### Seeding rate

- 7-12kg/ha

## Flax (*Linum usitatissimum*)

Flax, also known as linseed, is a winter flowering plant commonly used as a cover-, seed- or fibre crop. It has a low nutrient demand and normally flowers about 7 weeks after planting, flowering for about 2 - 4 weeks. It has pale blue flowers that attract bees and natural predators.

The plant is adaptable to a variety of soils and climates but grows best in well-drained sandy loam and in temperate climates. In most areas planting of the same land with flax is limited to once in six years to avoid soil exhaustion. Seedbed preparation for flax is like that for small grains. Sow flax early enough that the plants will become well established before freezing temperatures occur. After plants have branched at the crown, cold-hardy varieties can withstand much lower temperatures without serious injury. Preference to autumn planting. A relatively shallow planting depth is recommended, but the depth depends somewhat on soil texture and moisture conditions. The way flax responds to fertilizer applications will depend on moisture conditions, the previous crop, and the fertility status of the soil.

### Seeding rate

- 50-60kg/ha



Brown Mustard



Flax



## Buckwheat (*Fagopyrum esculentum*)

Buckwheat is a rapid growing broadleaf cover crop used to suppress summer annual weeds and build soil in short windows between warm season crops, or in the transition periods between winter- and summer annuals. It scavenges for phosphorus that is otherwise unavailable to crops and then releases it for the following crops as the residues break down. It has an excellent pollinator value and attracts other beneficial insects such as ladybirds, hover flies, tachinid flies, etc.

### Seeding rate

- 50kg/ha

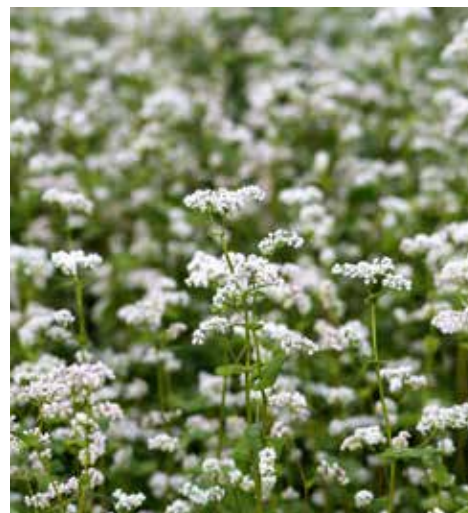
## Cilantro (*Coriandrum sativum*) NEW

Cilantro, called coriander when harvested for seed, is a hardy short-lived annual herb with a preference for cool temperatures. It attracts beneficial insects such as ladybirds, lacewings, hoverflies, parasitic wasps, tachinid flies, pirate bugs, etc. It is a major source of nectar and pollen for honeybees, bumblebees and other bees. Planting cilantro/coriander will provide many biological benefits for you farm, while providing fresh herbs and spice (leaves and seed) to use in your own kitchen. Therefore, keeping pollinators, beneficial insects, and everyone around the dinner table happy.

### Seeding rate

- 40-50kg/ha

***Other pollinator crops: sainfoin, lucerne, white clover, crimson clover, sweet white clover, vetch, canola & radish***



Buckwheat



Cilantro





# Cover Crops

 **BARENBRUG**





# Cover Crops

**Cover crop selection**

**Cover crops for specific purposes**

**Cover crop challenges**

Cover crops refer to any plant population established to benefit the soil, whether in rotation with cash crops or between rows of orchards or vines. The main purpose is to protect and enrich soils, leading to better soil health over time. A cover crop is a crop planted primarily to manage soil fertility, soil quality, water, weeds, pests, diseases, biodiversity and wildlife in an agro ecosystem (Lu et al. 2000), an ecological system managed and largely shaped by humans across a range of intensities to produce food, feed or fibre.

Cover crops are of interest in sustainable agriculture as most of them improve the sustainability of agro ecosystem attributes and may also indirectly improve qualities of neighbouring natural ecosystems. Farmers choose to grow and manage specific cover crop types based on their own needs and goals, influenced by the biological, environmental, social, cultural, and economic factors of the food system in which farmers operate (Snapp et al. 2005).



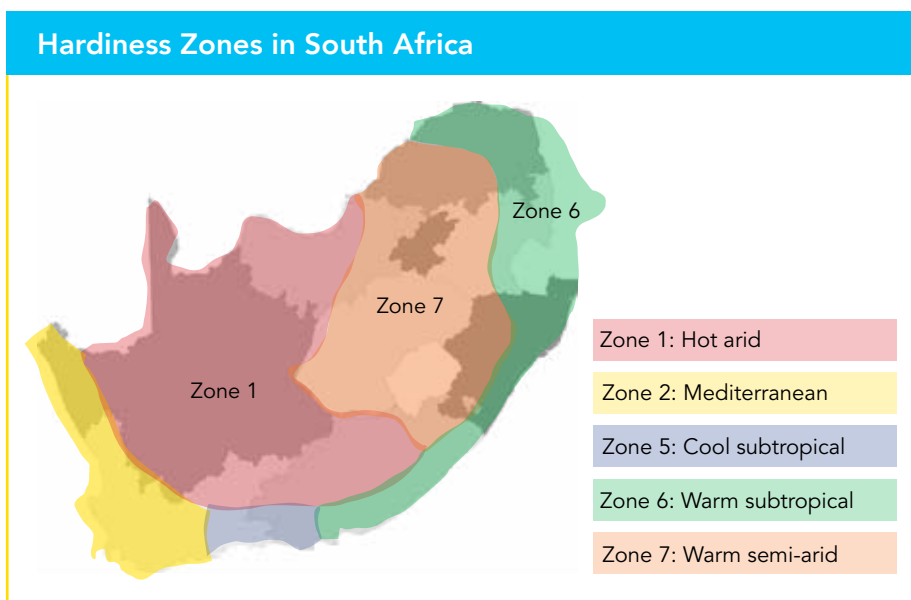


# Cover Crop Selection

It is important to select the correct species and varieties to ensure the best results. There are many options available, therefore it is extremely important to contact a cover crop specialist to assist you with the selection process. When selecting cover crops, the following factors should be considered:

## Climate

The availability of moisture differs throughout South Africa. Generally, the rainfall is greatest in the east and gradually decreases westward with most of the country receiving it in the summer months. The exception is the Western Cape which has a Mediterranean climate receiving most of its rain in winter followed by a dry summer. The coldest days are normally during June to August.



Scan to answer a few quick questions and receive a recommendation for a custom Barenbrug mixture.



Biomass production

## Soil type

Some species are very specific to which soil types they prefer and other are widely adapted. A soil analyses is therefore recommended to determine what soil types and structures are present on your farm. Refer to the table on page 109 for the soil preferences of different species.

## Goals

When monoculture or mixtures are selected, the end goal and what it is that you would like to achieve must be kept in mind. Here is a list of common goals:

- Weed suppression
- Biomass production
- Nitrogen fixation
- Alleviating compaction
- Erosion control
- Forage production
- Stimulation of microbial activity
- Bio fumigation
- Attracting natural predators and pollinators
- Low maintenance
- Decoration
- Moisture conservation
- Combatting soil disease



## Challenges

Possible challenges should be kept in mind during species/variety selection. This includes:

- Wet soils
- Low or high pH soils
- Saline soils
- Compaction
- Nematodes
- Low rainfall
- Erratic weather patterns
- Soil temperature
- Weeds
- Infrastructure
- Equipment

Considering the above-mentioned during selection will help to achieve the best possible result. It also makes cover crops much more cost effective.

## Cover crops for specific purposes

Since cover crops have different functions, it is important to determine what the crop is expected to do. Is the intent to add organic matter to the soil? Perhaps to add nitrogen to the cropping system? To stimulate soil biological activity? Or to protect the soil during the winter months?

### Cover crops for weed suppression

The main purpose is to suppress weeds in a natural way. Several cover crops are considered “smother” crops because they are used to control or suppress weeds. Crops that give the best results are those that are quick to germinate, provide rapid ground cover and form dense canopies.

- Vetch
- Saia Oats
- White Mustard
- Teff
- Phacelia
- Forage Rye
- Jap Millet
- Forage Barley
- Radish



Forage production



Barpower and Haymaker mixture





## Nitrogen fixing cover crops

The main purpose is soil improvement through nitrogen fixation. Legumes such as lupines, clovers, vetch and cow peas that can fix atmospheric nitrogen, are also able to supply nitrogen to subsequent crops. When sources of manure or compost are not readily available, legume crops can be inserted into a crop rotation to supply nitrogen to the cash crops.

Nitrogen fixing legume crops must be inoculated with rhizobium bacteria before planting (see inoculation guidelines). Legume crops require specific strains of fresh or well-preserved inoculants. Inoculation is particularly important if the legume crop has never previously been grown on the site. Also take note that legumes have different growth habits, especially when used in mixtures. Some are creepers and others have a prostrate growth habit.

- Lupines
- Vetch
- Medics
- Serradella
- Clovers
- Faba Beans
- Forage Peas
- Cowpeas
- Sunn Hemp
- Dolichos (Lablab)

## Low maintenance cover crops

Turf type grasses are popular cover crops used in orchards due to the low maintenance requirement. These grasses usually form a uniform surface that provides good ground cover as well as weed suppression. Although the idea is to help prevent soil erosion and waterlogging, suppress weeds and provide a good ground cover, the popularity remains the fact that it is a very persistent cover crop that requires little maintenance.

- RTF Fescue
- Creeping Red Fescue
- Paspalum notatum
- Durana - White Clover

## Bio fumigation and non-host cover crops

To interrupt pest life cycles, it is important to select cover crops of a different family than that of the future cash crops so that they do not harbour pests or diseases that can negatively impact the following cash crops. Some cover crops can perform bio fumigation if it is chopped up and worked into the soil, other crops serve as non-hosts. The host status differs between species and varieties for different pathogens and diseases.

- White Mustard
- Saia Oats
- Brown Mustard
- Rhodes Grass
- Fodder Radish
- Sunn Hemp



Kardinal Crimson Clover



Rhizomatous Tall Fescue (RTF)



Sito White Mustard



## Cover crops for mulches

The properties of the cover crop residues are very important as they have a direct influence on the outcome of organic matter decomposition (humification and mineralization) and other plant nutrition dynamics. Young and succulent green manure crops with a low C:N ratio will feed soil micro-organisms, while a mature, fibrous green manure crop such as cereal straw will form stable organic matter but provide less stimulation of soil biological activity.

- Saia Oats
- Forage Rye
- Triticale
- Forage Barley
- Forage Sorghum
- Pearl Millet (babala)
- Rhodes Grass
- Panicum maximum
- Eragrostis curvula

## Decorative cover crops

The right cover crop can even look decorative among other ornamental plants. Crimson clover is a good example, with its blossoms clustered tightly on upright stalks like strawberry popsicles, that you would hardly suspect that it was improving the soil.

- Crimson Clover
- Sunflower
- Phacelia
- Phacelia
- Flax

## Cover crops for soil improvement

The right cover crop can even look decorative among other ornamental plants. Crimson clover is a good example, with its blossoms clustered tightly on upright stalks like strawberry popsicles, that you would hardly suspect that it was improving the soil.

1. Soil aeration
2. Soil organic content
3. Soil microbe activity

Cover crops with large taproots or bulbs can penetrate the soil, breaking up compacted layers. In the process it can increase infiltration and aeration. This is not limited to these species seeing that all root types can aid in this process.

- Radish
- Turnips
- Mustards
- Lupines
- Forage Sorghum
- Annual Ryegrass
- Sunflower
- Rape



Saia Oats and Haymaker Vetch



Flowering Cover Crops



Fodder Radish





## Cover crops for waterlogged areas

Faba beans tolerate waterlogged conditions better than other grain legumes such as field peas and lupines. Other options include:

- RTF Fescue
- Paspalum notatum
- Balansa Clover
- Birdsfoot Trefoil
- Tall Fescue

## Natural predators and beneficial insects

Cover crops can attract beneficial organisms that prey upon or parasitize pests.

- Buckwheat
- Phacelia
- Radish
- Mustards
- Cilantro
- Zinnias



## Cover crop challenges

The use of cover crops is not without some potential challenges. Many annual cover crops must be mowed before they produce viable seeds which could become weeds. Some cover crops have allelopathic properties that can have negative effects on the cash crops that follow. Large amounts of cover crop residues can cause significant problems during planting of the next crop. Precision planters are particularly sensitive to seedbed conditions with excessive crop residues.

Nitrogen can be tied up during decomposition of incorporated fibrous plant material to the detriment of the cash crop. Poorly selected cover crops can attract, stimulate or harbour pests that can negatively impact the following cash crop. Some cover crops can benefit pests that could have a negative effect on the current or follow-up crops. Therefore, it is very important to consult a Barenbrug technical advisor during your selection process.





## COVERGRAZE™

*"The beef community use a technology that produces high quality protein from solar energy locked within human inedible plants. This technology produces a natural organic fertilizer and is mobile without using fossil fuels. This technology self-replicates. The technology is cattle. Beef is the original plant-based meat" – Dr Sara Place*



Barenbrug's COVERGRAZE™ mixtures provide the solution to farmers that want to produce forage for their livestock and simultaneously look after their soil health. For years it was recommended that farmers should keep their animals off cash crop lands, but with COVERGRAZE™ this way of thinking has changed. Utilizing cover crops with animals present the opportunity to generate an income and not only improve your soil biology. The correct utilization of cover crops, with high producing animals in the summer rainfall areas, have regularly shown to be more profitable than the normal cash crop options.

The management of grazing intensity and intervals is of the utmost importance. Therefore, farmers often move their herd on a daily basis under an ultra-high stock density (UHSD) grazing system. With this system they replicate the grazing habits of large herds in nature and prevent compaction due to the limited time that the animals spend in one camp.

The hoof action, manure, urine, saliva and even the CO<sub>2</sub> emissions of the herd is beneficial for microbes and play a big role in the build-up of organic matter in our soils. It should be kept in mind that providing enough drinking water is one of the biggest challenges of these UHSD systems seeing that livestock is moved regularly. Many creative solutions have presented itself to overcome this challenge.

With the help of your Barenbrug agronomist, COVERGRAZE™ mixtures can provide a complete fodder flow program tailor-made for your farm. This can ensure available pasture throughout the year in the form of green feed or standing hay. The idea is to establish species that will provide the highest amount of material of the best quality for a specific utilisation period. The growth period of different varieties and their potential regrowth must be kept in mind. The type of animal that will be utilizing the COVERGRAZE™ mixture also determines the species and variety best suited.





*Gert Jv Rensburg - Brits, North West*

**"We see soil life return in a relatively short period of time, which means we can cut back our fertilizer fairly quickly while the yield and quality improve. By utilizing it with my cattle we increase the working even further. After what we have seen for the last 3 years we are very excited about the role that mixed cover crops can play in our sustainability, profitability and competitiveness."**

In most circumstances it is advised to manage your COVERGRAZE™ mixture for regrowth. Normally this is achieved by grazing the cover crop before the main component of the mixture goes into a reproductive growth stage and not grazing it past the desired post grazing residual. A good rule of thumb is to move your animals before you can see their hooves. By doing this enough of the "factory" is left behind for photosynthesis to enable quick regrowth for the next grazing.

The idea is to graze the "cream" of the crop with UHDG and then move the herd. There are some species and varieties that can endure severe grazing better than others, such as Pearler hybrid millet and annual ryegrass. Always remember

that root reserves are depleted after too heavy grazing, and it may take longer for regrowth to commence. This can give weeds the opportunity to present themselves. Herds can also be used to control weeds, terminate cover crops and even to establish cover crops with their trampling action.

Barenbrug is proud to offer COVERGRAZE™ specific products for cover cropping. Not only are these products perfect for non-grazing cover crop systems, they also offer superior forage production, digestibility and quality for grazing animals. If COVERGRAZE™ is part of your cover crop plan, choose Barenbrug products for performance that matches your needs.



Scan for  
COVERGRAZE™ video





# Intercropping

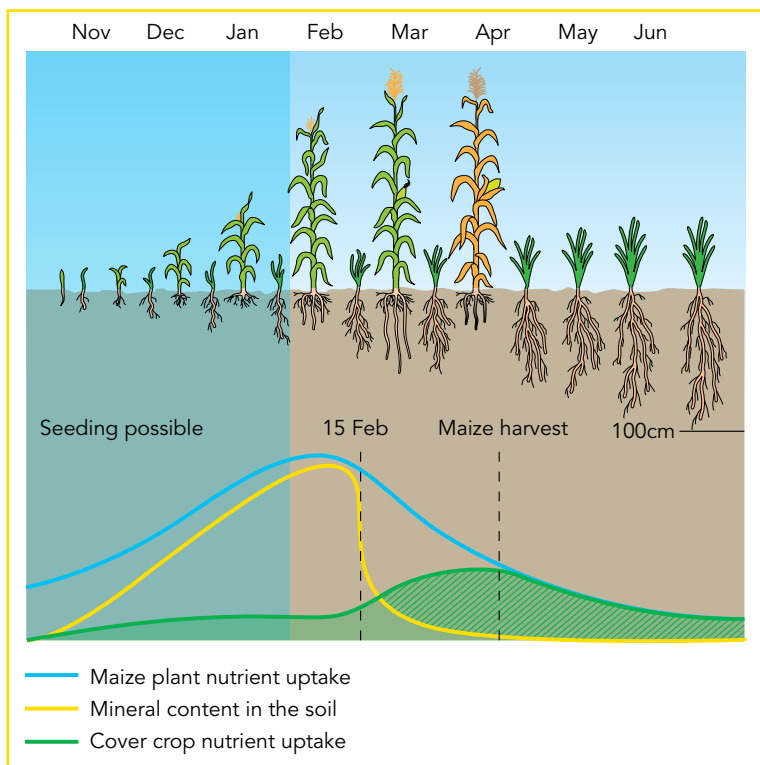
Intercropping is the establishment of a second crop, or cover crop(s), on a field where the previous crop is not removed yet. This is a new concept for most farmers, but something that is possible even in our challenging climatic conditions. For the simple reason that very little moisture is available at harvest of maize, it has become increasingly popular to establish the second crop during the maize's growing season. This allows the second/cover crop to utilize moisture while it is available. For a cover crop to be able to grow with maize it should comply with the following rules:

- The cover crop species should be able to germinate and survive at the planned seeding date.
- The cover crops should not excessively compete with the cash crop for moisture and nutrients.
- The cover crop species should be able to survive in the shade of the maize until the maize starts to dry and then be able to utilize the available sunlight and moisture (normally March until May) to ensure enough growth.
- It is also favourable if the cover crop can provide a living root and quality grazing for livestock during winter.



Factors that determine the success of intercropping:

- Method of establishment (planter vs. spreader)
- Soil coverage during establishment
- Seed sizes of cover crops
- Available sunlight (growth stage, row width and stance of maize)



Maize intercropping



A male golfer in a white polo shirt and dark blue trousers is captured in the middle of a golf swing, hitting a sand trap. A large cloud of sand is being kicked up by the club head. The background shows a green golf course with trees under a clear blue sky. The entire image is framed by a yellow border.

# Turf Grasses

 **BARENBRUG**





### Warm season grasses

- Kikuyu
- Cynodon
- Paspalum notatum (Bahia)
- Dichondra Wonderlawn

### Cool season grasses

- Perennial rye grass (turf-type)
- Annual rye grass (turf-type)
- Tall fescue (turf-type)
- Fine fescues – includes:
  - Creeping Red Fescue
  - Chewings Fescue
- Blue grasses – includes:
  - Creeping Bent grass
  - Colonial / Highland Bent

## New Concepts



- Perennial ryegrass with pseudo-stolons
- Number one choice in intense wear tolerance such as tournaments
- Outperforms traditional perennial ryegrass
- Increased disease and insect resistance
- Trademark exclusive



- Annual turf-type ryegrass
- Overseeding made easy
- Easy transition and easy on your budget
- Huge improvement on turf characteristics e.g. colour and texture



- Rhizomatous Tall Fescue
- Marketed as Turf Saver
- Repairs itself. The rhizome roots fill in bare spots in a thinning lawn
- Produces a thick, even, lush, soft-to-the-touch turf
- Promotes deep-rooting plants with great tolerance to heat and dry conditions
- Saves on overseeding costs of damaged turf



- Yellow Jacket seed coating
- Significant improvements in germination and establishment
- Yellow Jacket less prone to diseases
- Reduced water consumption and establishment costs
- Makes seeding easier/more accurate



- Kentucky Blue Grass
- Eliminate summer Patch
- Thrives in heat
- Unrivalled traffic tolerance
- Exceptional spring green up
- Defeat Billbug and White Grubs

**A full range of  
Turf Grass species  
are available**





# Pasture Summary

 **BARENBRUG**



Pasture Species Summary

	Species	Seed count (seeds/kg)	Seeding Rate (kg/ha) **	Nutritional values * DM (%)	Nutritional values * ME (MJ/kgDM)	Nutritional values * CP (%)	Nutritional values * NDF (%)
Temperate Grasses	Perennial Ryegrass	± 353 000	25-30	16-18	11-13	20-25	38-48
	Tall Fescue	± 411 000	25-30	18-21	9-10.5	13-17	50-57
	Cocksfoot	± 1 285 000	15	18-22	9-10.5	15-18	54-60
	Hybrid Ryegrass	± 286 000	25-30	16-18	11-13	20-25	38-48
	Annual Ryegrass	± 215 000	25-30	16-18	11-13	20-25	38-48
Tropical Grasses	Brachiaria Hybrids	± 60 000	10-15 (ctd)	28-40	7-9	12-16	58-60
	Brachiaria Brizantha	± 80 000	10-15 (ctd)	28-40	7-8	9-12	60-62
	Guinea Grass	± 985 000	6-10 (ctd)	28-40	7-9	10-14	68-72
Subtropical Grasses	Rhodes Grass	± 570 000	12-20 (ctd)	28-48	6-9	4-12	65-75
	Smutsfinger Grass	± 885 000	12-20 (ctd)	28-48	6-9	4-12	65-75
	Blue Buffalo Grass	± 65 000	12-20 (ctd)	28-48	6-8	4-12	65-75
	Bottle Brush Grass	± 38 000	12-20 (ctd)	28-48	6-9	4-12	63-75
	Weeping Love Grass	± 1 877 000	8-12 (ctd)	28-48	6-8	4-12	65-75
	White Buffalo Grass	± 977 000	8-15 (ctd)	28-48	7-9	4-12	65-75
	Small Buffalo Grass	± 888 000	6-10 (ctd)	28-48	7-9	4-12	65-75
	Sabi Grass	± 105 000	5-10 (ctd)	28-48	7-9	4-12	65-75
	Kikuyu	± 168 000	5-10 (ctd)	15-18	8-10	16-18	48-62
Annual Summer Grasses	Sweet sorghum	± 41 000	8-20	20-30	8-9.5	10-16	55-65
	Forage sorghum	± 49 000	20-25	20-30	7-9	10-16	55-65
	Hybrid millet	± 82 000	5-15	20-30	9-10	15-22	50-58
	Babala	± 60 000	15-25	20-30	7-8	8-15	58-68
	Teff	± 4 179 000	15-25	25-40	8-9	15-18	50-65
Annual Winter Cereals	Saia Oats	± 53 000	40-50	20-30	7-9	13-22	45-63
	Forage Oats	± 43 000	50-60	15-25	9-10.5	16-24	50-55
	Forage Barley	± 36 000	60-70	15-30	9-10.5	12-22	40-55
	Silage Barley	± 19 000	60-70	20-35	8-10	10-20	45-60
	Triticale	± 28 000	120-140	20-35	9-10.5	10-20	40-60
	Forage Rye	± 55 000	50-60	15-35	8-10	13-22	43-65
Legumes	Medics	± 299 001	10-15	20-24	10-11	15-29	30-55
	Serradella	± 352 000	15-25	20-24	9-10	20-26	35-55
	Crimson Clover	± 266 000	10-15	16-24	10-11	11-19	34-39
	Persian Clover	± 542 000	6-10	14-24	7-8	8-19	28-48
	Sub Clover	± 120 000	10-15	14-20	9-10	10-28	30-54
	White Clover	± 1 463 000	6-10	14-18	10-12	17-33	26-32
	Red Clover	± 491 000	8-12	14-20	10-12	20-30	34-45
	Woolpod Vetch	± 33 000	15-25	16-25	10.5-13	18-30	32-45
	Common Vetch	± 15 000	20-30	17-24	9.5-12	18-30	30-40
	Lucerne	± 392 000	18-30	20-28	10-11	18-30	30-45
	Poor Man's Lucerne	± 681 000	15-25	23-30	7.5-8.5	12-20	40-58
	Forage Peas	± 5 000	100-120	13-18	8-12	14-24	24-37
	Birdsfoot Trefoil	± 832 000	6-10	12-32	8-10	16-24	30-45
	Sainfoin	± 52 500	65-90	16-30	8-10	12-21	26-45
	Sweet Clover	± 622 000	9-12	14-30	8-10	13-17	32-50
	Cowpeas	± 17 000	20-25	18-22	9-11	16-20	36-44
	Dolichos	± 6 000	20-30	20-24	9-10	16-20	42-46
Brassicas & Herbs	Chicory	± 712 000	6-8	8-19	11-13	20-26	20-30
	Plantain	± 759 000	8-10	9-20	11-12	16-28	23-36
	Forage Turnip	± 400 000	2-5	9-11	11-13	12-18	22-28
	Fodder Radish	± 56 000	2-5	10-12	10-12	18-24	30
	Forage Rape	± 261 000	4-5	13-15	11-13	12-18	23-30
	Fodder Beet	± 39 000	80 000 seeds	14-20	12-13	14-16	11-16





DM Yield Potential (ton/ha) *	Utilization	Growing Duration	Planting Season	Soil Type
12-16	G S	Perennial	A/W	Sandy to clay
13-17	G S	Perennial	A/W	Loam to clay
10-14	G S	Perennial	A/W	Sandy to loam
12-16	G S	Perennial	A/W	Sandy to clay
12-16	G S	Annual, Long	A/W	Sandy to clay
25-28	G	Perennial	S/S	Sandy to loam, well-drained
20-25	G	Perennial	S/S	Sandy to loam, well-drained
26-30	G S	Perennial	S/S	Sandy to loam, well-drained
12-20	G H	Perennial	S/S	Sandy to clay
7-15	G H	Perennial	S/S	Sandy to clay, well-drained
7-15	G H	Perennial	S/S	Loam to clay
7-9	G	Perennial	S/S	Sandy to loam
8-15	G H	Perennial	S/S	Sandy to loam
12-20	G H	Perennial	S/S	Loam, well-drained
8-15	G H	Perennial	S/S	Clay
8-12	G H	Perennial	S/S	Sandy to clay
10-20	G	Perennial	S/S	Loam to clay
20-35	G H S	Annual, Long	S/S	Fertile, well-drained
10-18	G H S	Annual, Medium	S/S	Fertile, well-drained
12-18	G H S	Annual, Long	S/S	Sandy to clay
8-12	G H	Annual, Short-Medium	S/S	Sandy to clay
8-18	G H	Annual, Short	S/S	Sandy to clay
6-10	G H	Annual, Medium	A/W & S/S	Sandy to heavy clay
8-12	G H S	Annual, Medium to Long	A/W	Loam to heavy clay
5-9	G H S	Annual, Short	A/W	Loam to clay, well-drained
6-10	G H S	Annual, Short	A/W	Loam to clay, well-drained
6-9	G H S	Annual, Medium	A/W	Loam to clay, well-drained
5-9	G H	Annual, Medium	A/W	Sandy to clay, well-drained
3-6	G H	Annual, Long	A/W	Loam to clay
3-6	G H	Annual, Long	A/W	Sandy to loam
3-6	G H	Annual, Long	A/W	Loam to clay, well-drained
3-6	G	Annual, Long	A/W	Loam to clay
3-6	G	Annual, Long	A/W	Sandy to clay
7-9	G	Perennial	A/W	Loam to clay
9-11	G	Short lived perennial	A/W & S/S	Loam to clay
6-8	G H S	Annual, Long	A/W & S/S	Sandy to loam, well-drained
5-6	G H S	Annual, Medium	A/W	Sandy to loam, well-drained
18-25	G H	Perennial	A/W & S/S	Loam to clay, well-drained
6-10	G	Perennial	S/S	Loam, well-drained
8-10	G S	Annual, Short	A/W	Loam to clay, well-drained
6-8	G	Perennial	A/W & S/S	Adapted to acid and waterlogged soils
5-7	G H	Perennial	A/W	Loam to clay, well-drained
6-12	G	Annual, Long	S/S	Sandy to clay, not alkaline
3-8	G	Annual, Medium	S/S	Loam, well-drained
5-12	G	Annual, Long	S/S	Sandy to heavy clay, tolerates acidity
14-18	G	Short lived perennial	A/W & S/S	Sandy to clay, Well-drained
16-26	G	Perennial	A/W & S/S	Sandy to clay, Well-drained
8-12	G	Annual, Medium	A/W & S/S	Loam to clay
5-12	G S	Annual, Medium	A/W & S/S	Sandy to clay
7-10	G	Annual, Long	A/W & S/S	Sandy to clay
18-25	G	Annual, Long	S/S	Sandy to clay

DM Dry Matter  
ME Metabolic Energy  
CP Crude Protein  
NDF Neutral Detergent Fibre  
G Grazing  
H Hay  
S Silage  
A/W Autumn/Winter  
S/S Spring/Summer

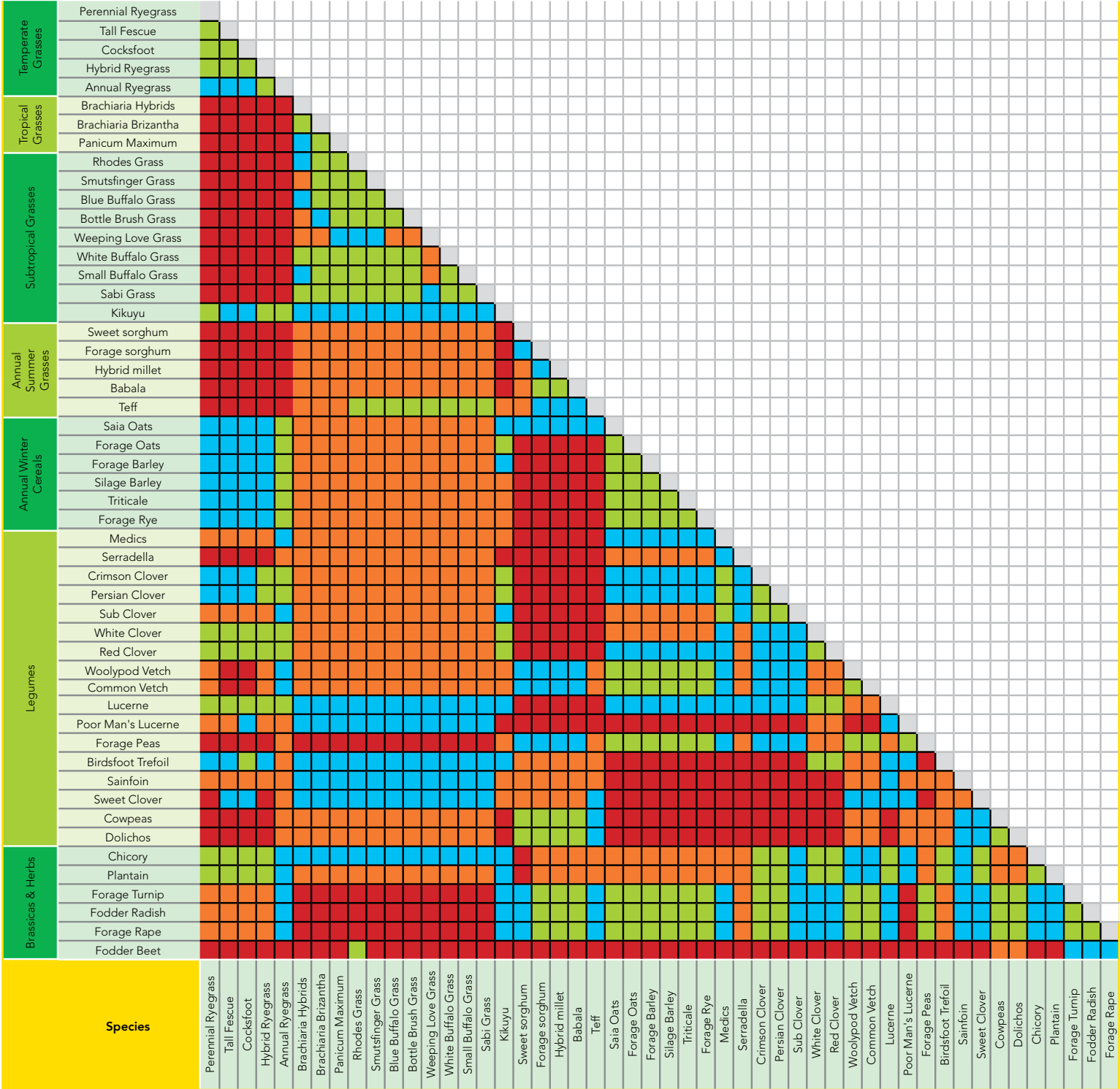
**\*\*General rule of thumb:**  
Seeding depth = seed size x 10.  
This can vary according to soil texture and moisture availability.

**\*Nutritional value and DM yield potential vary with different soil, climatic conditions, management and varieties.**

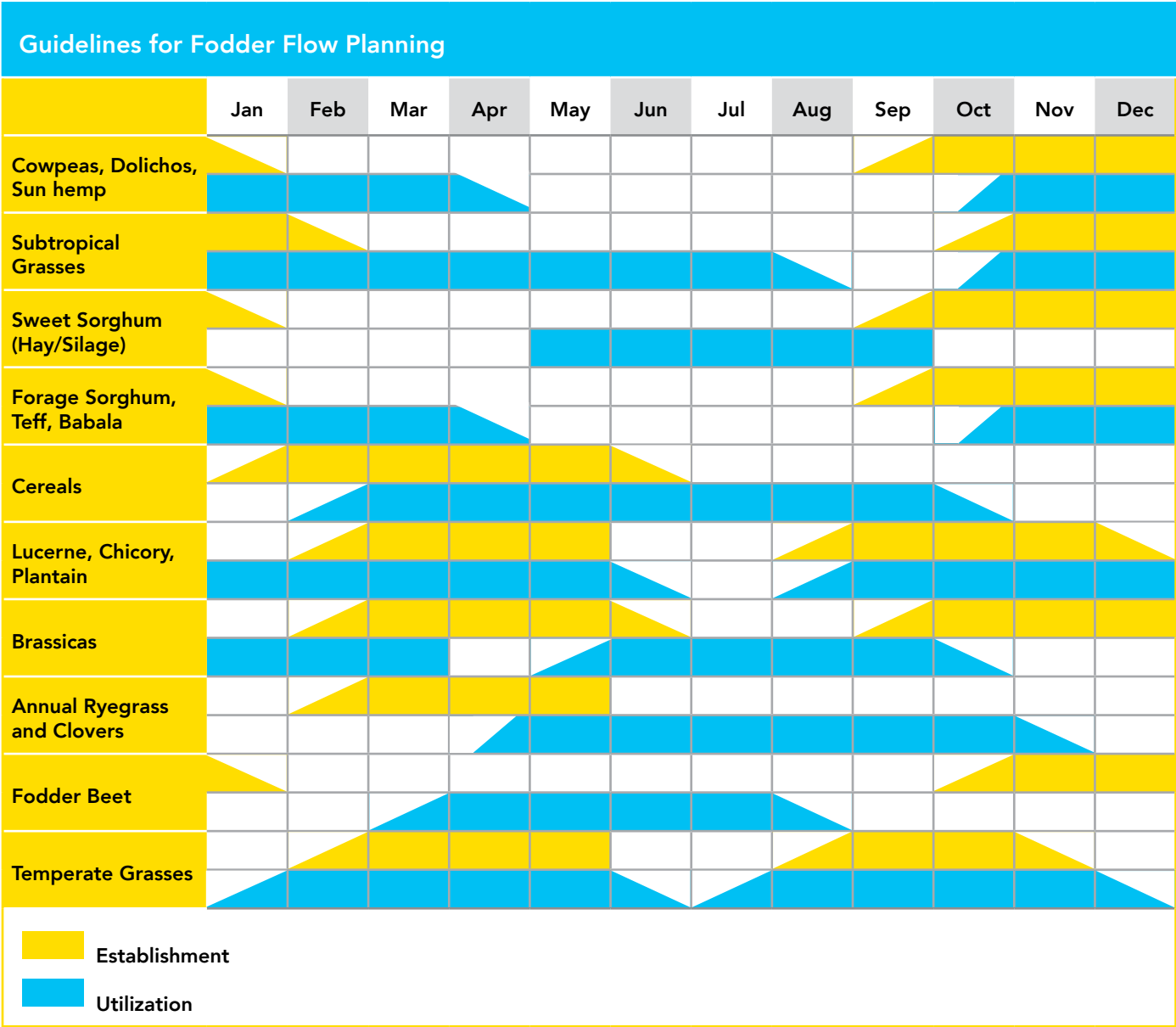




## Pasture Species Compatibility















# SUSTAINABLE SEED ENHANCEMENT

## Rhizobium-ready Legumes:

Coated legume seeds come with live Rhizobium bacteria for better nitrogen fixation.

## Quick Growth in Tough Conditions:

Subtropical grass seeds with Yellow Jacket coating establish faster and survive better in challenging environments.

## Easy Planting:

Coating minimizes seed dust-off, making seeds more flowable and easier to plant.

## Quality Assurance:

Backed by science, ensuring reliable seed quality and providing peace of mind for users.


***Superior establishment with Barenbrug's Yellow Jacket Seed Coating!***



### *COATED LUCERNE TESTIMONIAL - Kameeldrift Voere, Cullinan*

"This was our first time planting coated Lucerne. The advice we received was crucial and ensured the quality of the end product. The extra hours spent preparing our seedbed to be firm and fine made a significant difference. The stand is excellent. Initially, we were concerned about the amount of wasted seed needed, but we experienced considerable savings compared to untreated seed. There was no need for self-inoculation; we could simply plant. I am impressed with the speed of germination; we planted late (June 12th) during the coldest time of winter. We observed germination just 10 days later. The slight heat that came in August caused the plants to shoot up, and the crop was 90% closed after 9 weeks."



A photograph of two men standing in a grassy field. The man on the left is wearing a blue short-sleeved button-down shirt and grey shorts, smiling at the camera. The man on the right is wearing a dark blue short-sleeved button-down shirt, light blue jeans, and a red and white baseball cap, looking towards the left. In the background, there is a large, misty water fountain and a grassy hill under a cloudy sky.

Make Life Beautiful

Scoring the winning goal in your school match. Watching your cattle graze on an endless field. Having a picnic with your friends in the park. Barenbrug believes success starts from the ground. This is why we offer you the best foundation. A foundation for opportunities.

We just love to take the road less travelled. To find new answers. Discover innovative technologies. And yes, we even take a leap of faith. Because sometimes the best ways are off road.

Royal Barenbrug.

At your service on 6 continents.  
Because you deserve the best.

 **BARENBRUG**

Make Life Beautiful





***Make Life  
Beautiful***

 **BARENBRUG**



## Contact Details

**Western Cape** | 021 979 1303

**Gauteng** | 087 808 2652

**Limpopo** | 087 808 2652

**Mpumalanga** | 087 808 2652

**North West** | 072 108 7033

**Free State** | 072 108 7033

**KwaZulu-Natal** | 033 263 1051

**Southern Cape** | 082 629 1086

**Eastern Cape** | 076 368 3684

**Northern Cape** | 083 227 6599



Scan for website

 **BARENBRUG**

   [info@barenbrug.co.za](mailto:info@barenbrug.co.za)

[www.barenbrug.co.za](http://www.barenbrug.co.za)

**Disclaimer:** The information presented in this publication is offered in good faith, based on seed industry data and relevant advice. Every effort has been made to ensure accuracy and freedom from error. Barenbrug, its agents or advisors, accepts no responsibility for any loss or actions arising from viewing the publication's content. Copyright Barenbrug © 2023. Barenbrug's varieties are protected under the PBR Act 1994.

