





Contents

Golf

- 5 Fescue
- 6 Fairway
- 7 Shoreline
- 8 Classic 80:20
- 9 Platinum Fine Turf
- 10 All Bent
- 11 Duo Bent
- 12 SGT Fairway
- 14 Medal
- 15 Ultrafine
- 16 Extreme
- 17 RPR Golf

Cricket & Tennis

- 19 Extreme
- 20 Medal
- 21 Ultrafine

Football & Rugby

- 23 Elite Sport
- 24 RPR Sport
- 25 Multi Sport
- 26 Smooth Sport
- 27 SOS

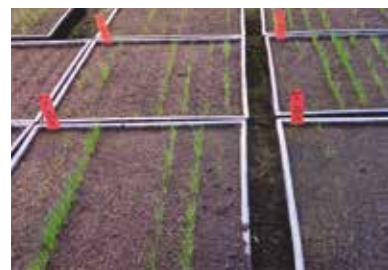
Racing & Polo

- 29 RPR Sprint
- 30 SOS
- 31 Extreme

- 32 Knowledge – Turf Grass Identification
- 33 Sowing and Seeding Rates
- 33 Guide to Species Characteristics
- 34 Our Partners
- 35 Regional Technical Support



**Welcome to the
Barenbrug Sport Range
of grass seed products
for 2020.**



As always, years of dedication in breeding, research and development, trialling and production have brought us to this point – having a range of products suited to you and your needs. We trust they will help you to create natural grass surfaces to be enjoyed by the sporting world.

This year we introduce **SGT** (Sustainable Grass Technology), Barenbrug's newest innovation, which promises a future of stress tolerant grass for sustainable turf management. **SGT FAIRWAY** (pages 12-13) has been formulated after years of dedicated research across multiple sites in Europe, including STRI in the UK. It is a rye/fescue blend with (independently proven) reduced requirements for fertiliser, water and fungicide. Central to the mixture is the new perennial ryegrass *Barprimum* – a fine-leafed cultivar with truly remarkable performance under stress conditions.



Staying in Golf (pages 5-17), our bentgrass product portfolio is significantly enhanced for 2020 with the reformulation of **ALL BENT** and the introduction of **DUO BENT** to the range. Both mixtures feature *Charles*, the #1 browntop bentgrass for Greens use (BSPB/STRI Turfgrass Seed 2020). Alternatively for golf greens, **FESCUE** sees the re-coronation of *Barcrown* as #1 slender creeping red fescue and also includes the #1-rated Chewings *Barlineus*.



Barolympic remains the stand-out perennial ryegrass for Summer Sports (pages 19-21), and features heavily in mixtures **ULTRAFINE**, **EXTREME** and **MEDAL**.

In Winter Sports (pages 23-27), our industry-leading **ELITE SPORT** perennial ryegrass mix is further enhanced by the addition of a new variety *Baradona*. This cultivar is also added to our popular blend **MULTI SPORT**, unique in the fact that it features 100% UK-produced seed.

Finally, equestrian surfaces (pages 29-31) are covered with **RPR SPRINT** and **SOS**, the innovative market-leaders for fast growth and recovery.

Expert Seed Research

Quality and consistent performance from Barenbrug.

Our research and development focuses on meeting customer needs and developing solutions to improve sports surfaces everywhere.

The joy of creating quality products that exceed expectations is at the heart of our research.

UK Development

Our sustained investment in trials ensures we provide the best performing sports grass seed range.

Trials across the UK and our own Cropvale Research site ensure our mixtures perform as we expect.

Without this proven UK performance, a cultivar won't make it into a mixture and that mixture won't make it into our product range.

UK Grass Seed Production

With over 2,000 ha of UK production, we produce clean, quality grass seed for all sports.

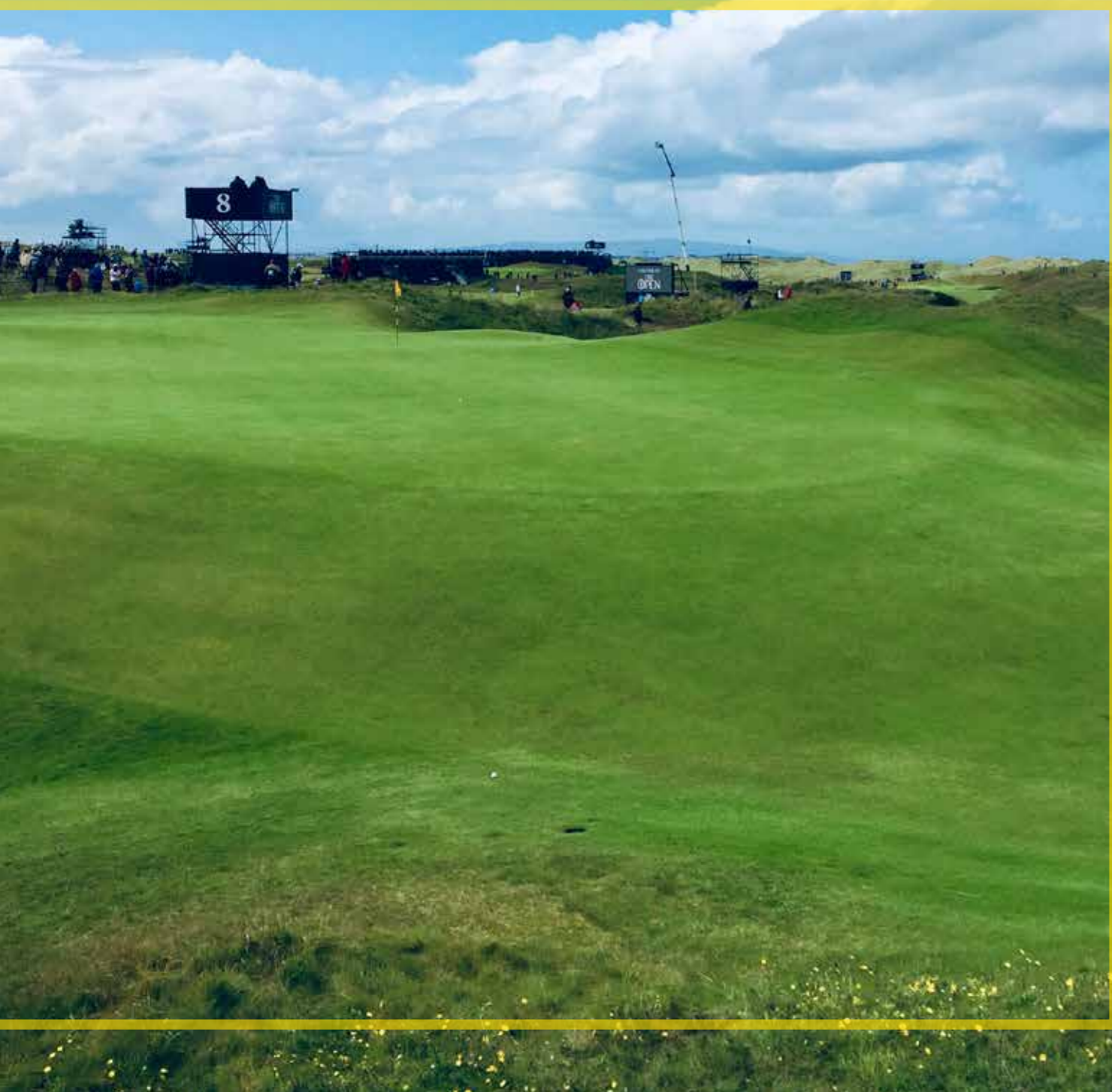
We are the UK's largest amenity seed producer, highlighting our commitment to UK farmers.

Growing the grass seed here delivers advantages for our customers.

Alongside supporting the UK farming industry, we're also aiming to produce all our grass seed to the Higher Voluntary Standard (HVS), which is unique to the UK, guaranteeing a higher level of purity than European Union standards.

The next time that you see a bag of grass seed, don't just look at the price – delve a little deeper.

Golf



Fescue

Golf greens, tees, fairways, bowling greens

Usage

Overseeding and/or **construction** of free-draining fine-turf areas; golf and bowling greens; tees and fairways

Key points

- *Barlineus* #1 Chewings
- *Barcrown* #1 slender

Species Formulation

50% slender creeping red fescue
50% Chewings red fescue

FESCUE is an outstanding blend of no fewer than six red fescue cultivars; *Viktorka*, *Barcrown*, *Barlineus*, *Bargreen II*, *Bodega* and *Musica*, for the overseeding and construction of free-draining fine turf.

The mixture is made up of 50% slender red creeping fescue and 50% Chewings red fescue seed. The combination of these two sub-species offers the best solution for year-round performance and growth in fescue-dominant turf – Chewings fescues will generally be most active in spring through to mid-summer, whereas slender creepers “kick in” during early summer and perform well through to autumn.

Table 1 shows the performance of the cultivars in the BSPB Turfgrass Seed Booklet 2020; Tables G2 & G3. FESCUE contains both the top-rated Chewings and slender varieties (*Barlineus* and *Barcrown*).

With another three top-10 varieties and old favourite *Musica* completing the blend, FESCUE is unrivalled as the market-leading mixture of its type for fine turf use.

CULTIVAR	Shoot Density	Visual Merit	Mean
<i>BARLINEUS</i>	8.3	8.0	8.1
<i>Dancing (LA)</i>	7.8	7.8	7.8
<i>Filius</i>	7.8	7.6	7.7
<i>Bogart</i>	7.7	7.7	7.7
<i>BARGREEN II</i>	7.7	7.6	7.6

CULTIVAR	Shoot Density	Visual Merit	Mean
<i>BARCROWN</i>	7.8	7.3	7.6
<i>Cezanne</i>	7.5	7.6	7.5
<i>Absolom (LA)</i>	7.2	7.8	7.5
<i>VIKTORKA</i>	7.6	7.3	7.5
<i>Brumana (LA)</i>	7.4	7.4	7.4

IN THE BAG

35%	VIKTORKA Slender creeping red fescue
20%	BARLINEUS Chewings red fescue
15%	BARCROWN Slender creeping red fescue
10%	BODEGA Chewings red fescue
10%	BARGREEN II Chewings red fescue
10%	MUSICA Chewings red fescue

Sowing rate:	25-35g per m ²
Overseeding rate:	15-25g per m ²
Sowing depth:	8-12mm below thatch
Mowing height:	Down to 4mm
Pack size:	20kg

Table 1 Scoring and ranking of FESCUE cultivars from Turfgrass Seed 2020 for golf greens use.



Photo by Kevin Murray

Fairway

Fairways, tees, roughs

Usage

Overseeding, divoting and/or construction of free-draining turf areas; tees, fairways and roughs

Key points

- *Hardtop* for performance under low nutrition and drought
- *Barjessica* drought tolerance
- High quality red fescues with excellent disease resistance

Species Formulation

50% strong creeping red fescue
20% slender creeping red fescue
20% Chewings red fescue
10% hard fescue

FAIRWAY is an excellent blend of four fine fescue species; hard fescue and the three sub-species of red fescue; slender creeping, strong creeping and Chewings. It is designed for overseeding, divoting and constructing free-draining turf areas on the golf course.

Hardtop hard fescue offers superior performance under many stress factors associated with turf areas that this blend is used for. These include drought, heat, cold and low nutrition.

Barjessica is a new cultivar of strong creeper that has the highest heat and drought tolerance of any Barenbrug variety of red fescue tested independently in trials at Landlab in Italy.

The red fescue cultivars in the mix are all consistent performers and are all ranked highly in the BSPB Turfgrass Seed Booklet. Of particular note is the outstanding red thread tolerance of *Barrissee* (ranked #1) and *Barpearl* (#2), an important factor in fairways under low nutrition.

IN THE BAG

35%	BARRISSE Strong creeping red fescue
20%	BARPEARL Slender creeping red fescue
15%	BARJESSICA Strong creeping red fescue
15%	BODEGA Chewings red fescue
10%	HARDTOP Hard fescue
5%	BARLINEUS Chewings red fescue

Sowing rate:	20-35g per m ²
Overseeding rate:	15-25g per m ²
Sowing depth:	8-12mm below thatch
Mowing height:	Down to 7mm
Pack size:	20kg



Shoreline

Coastal courses

Usage

Overseeding and/or construction of free-draining fine and medium-fine turf areas exposed to saline conditions.

Key points

- Germination and survival in salt
- *Viktorka* and *Barpearl* highly ranked in Turfgrass Seed Booklet

Species Formulation

100% slender creeping red fescue

SHORELINE is an innovative blend of slender creeping red fescue cultivars; the name Shoreline is derived from the Latin *litoralis*, the species name for slender creepers. The mix contains two top-10 ranked varieties: *Viktorka* and *Barpearl*.

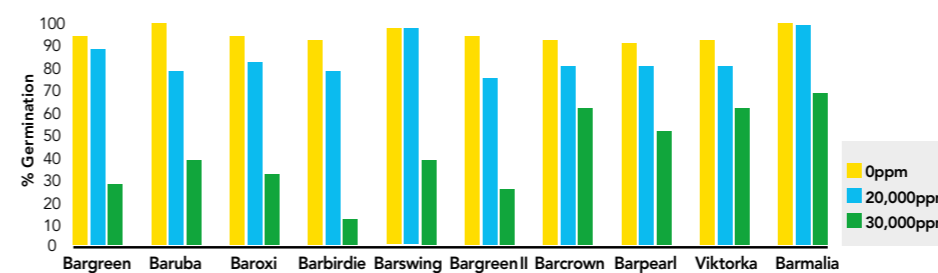
The mix provides superior salt tolerance for fescue dominant golf greens on links and seaside golf courses exposed to salt spray and salt-laden winds. It is suitable for the construction and overseeding of all areas of free-draining turf exposed to salt.

Germination salt tolerance is tested in a laboratory using ISTA parameters at different salt levels equivalent to sea water of 20,000 and 30,000 parts per million (ppm), with 0ppm as a control. Laboratory trials at Barenbrug research demonstrate the superior germination capability of cultivars of slender creeping red fescues (*Festuca rubra litoralis*) in comparison with cultivars of Chewings fescues (*Festuca rubra commutata*). The data represents percentage germination after 30 days at 0ppm (control), 20,000ppm and 30,000ppm (Graph 1).

IN THE BAG

50%	VIKTORKA Slender creeping red fescue
50%	BARPEARL Slender creeping red fescue

Sowing rate:	35-45g per m ²
Overseeding rate:	20-30g per m ²
Sowing depth:	8-12mm below thatch
Mowing height:	Down to 4mm
Pack size:	20kg



Graph 1

Laboratory Test: Germination of cultivars of slender creeping red fescue and Chewings fescue.

Chewings fescues: *Bargreen*, *Baruba*, *Baroxi*, *Barbirdie*, *Barswing*, *Bargreen II*.

Slender creeping red fescues: *Barcrown*, *Barpearl*, *Viktorka*, *Barmalia*.



Classic 80:20

Golf greens, bowling greens

Usage

Construction of free-draining fine-turf areas; golf and bowling greens

Key points

- *Barlineus* #1 Chewings
- *Charles* #1 browntop bentgrass
- *BarKing* #5 *Microdochium* tolerance

Species Formulation

80% red fescue
20% browntop bentgrass

CLASSIC 80:20 is a traditional mix of fescue and bentgrass designed to deliver a consistent and balanced blend of these species when sowing out new fine-turf areas such as golf and bowling greens.

CLASSIC 80:20 contains both the top-rated red fescue on the market (*Barlineus* - 20%) and the top-rated browntop bentgrass on the market (*Charles* - 10%). *Charles* is a new NZ-bred variety, named after Bob Charles, the first left-handed golfer to win a major. Like Bob, it breaks new ground, being ranked #1 by a clear half-point in Turfgrass Seed 2020 Table G1 (Figure 1).

The other bentgrass in the mixture is *BarKing*, a European-bred variety with exceptional tolerance to *Microdochium* Patch disease (*Fusarium*). In the latest concluded independent BSPB/STRI bentgrass trial, it ranked #1 for *Microdochium* tolerance out of 39 cultivars tested (Figure 2).

IN THE BAG

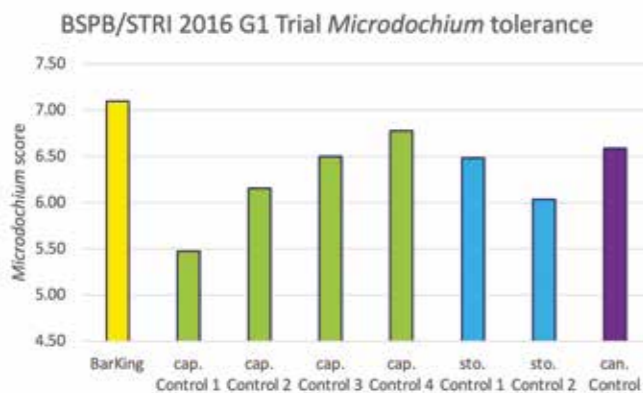
40%	VIKTORKA Slender creeping red fescue
20%	BARLINEUS Chewings red fescue
20%	RAMONA Chewings red fescue
10%	BARKING Browntop bentgrass
10%	CHARLES Browntop bentgrass

Sowing rate:	20-30g per m ²
Overseeding rate:	10-20g per m ²
Sowing depth:	Rootzone contact
Mowing height:	Down to 4mm
Pack size:	20kg

CULTIVAR	Shoot Density	Visual Merit	Mean
CHARLES	7.6	7.6	7.6
Arrowtown	7.0	7.2	7.1
Cleek (LA)	6.9	7.1	7.0
Manor	6.9	7.0	6.9
BARKING	6.5	7.0	6.7

Figure 2 2016 G1 BSPB trial data. *Microdochium* tolerance of *BarKing* (ranked #1 in trial), compared to Control varieties of browntop (cap.), creeping (sto.) and velvet (can.) bentgrasses.

Figure 1 Top scoring/ranking browntop bentgrass cultivars in BSPB Turfgrass Seed 2020 Table G1.



Platinum Fine Turf

Golf greens, tees, fairways, bowling greens

Usage

Overseeding and/or construction of fine turf with moderate wear; golf and bowling greens; tees and fairways

Key points

- *Barolympic* #1 Table G4 8.7
- Excellent slender and Chewings varieties

Species Formulation

30% perennial ryegrass
40% slender creeping red fescue
30% Chewings red fescue

PLATINUM FINE TURF is a mixture of perennial ryegrass and red fescue, designed for the construction or overseeding of fine turf under moderate wear pressure.

The "driver" of the mixture is 30% *Barolympic* perennial ryegrass. *Barolympic* is the stand-out cultivar ryegrass for summer sports use. It is ranked with a score of 8.7 in Table G4 of BSPB TGS 2020, the highest Mean score in the entire publication, and more than a full point clear of its nearest rival in G4! See Table 1.

In addition to its outstanding Mean score, *Barolympic* is ranked #1 for pale colour and #2 for fineness of leaf in Table G4. This makes it exceptionally easy to blend in with other grass species, such as red fescue or annual meadowgrass.

The red fescue cultivars *Viktorka* and *Musica* are excellent performers, both top-10 rated in the 2020 booklet.

CULTIVAR	Shoot Density	Visual Merit	Mean
BAROLYMPIC	8.6	8.8	8.7
<i>Clementine</i>	7.7	7.6	7.6
<i>Cabrio</i>	7.3	7.5	7.4
<i>Barsignum</i>	7.2	7.2	7.2
<i>Monroe</i>	6.8	7.2	7.0
<i>Dickens 1</i>	6.9	7.0	7.0
<i>Estelle</i>	6.5	6.9	6.7

Table 1 Top scoring /ranking perennial ryegrass cultivars in BSPB Turfgrass Seed 2020 Table G4.

IN THE BAG

30%	BAROLYMPIC Perennial ryegrass
40%	VIKTORKA Slender creeping red fescue
30%	MUSICA Chewings red fescue

Sowing rate:	25-35g per m ²
Overseeding rate:	15-25g per m ²
Sowing depth:	8-12mm below thatch
Mowing height:	Down to 4mm
Pack size:	20kg



All Bent

Golf greens, bowling greens

Usage

Overseeding golf and bowling greens

Key points

- Charles #1 by 0.5!
- BarKing *Microdochium* (*Fusarium*) tolerance

Species Formulation

100% browntop bentgrass

ALL BENT is a 100% browntop bentgrass blend designed for overseeding and species exchange in golf and bowling greens. It is of particular interest to golf courses focussed on improving *Microdochium* (*Fusarium*) tolerance of greens.

The blend contains two outstanding cultivars: *Charles* and *BarKing*.

Charles is a new NZ-bred variety, named after Bob Charles, the first left-handed golfer to win a major. Like Bob, it breaks new ground, being ranked #1 by a clear half-point in Turfgrass Seed 2020 Table G1 (see Figure 1)! Its scores for visual merit and shoot density promise to have a major impact as part of a species exchange programme, improving golf greens and out-competing the ubiquitous *Poa annua*.

BarKing is a European-bred variety with exceptional tolerance to *Microdochium* Patch disease (*Fusarium*). In the latest concluded independent BSPB/STRI bentgrass trial, it ranked #1 for *Microdochium* tolerance out of 39 cultivars tested (see Figure 2).

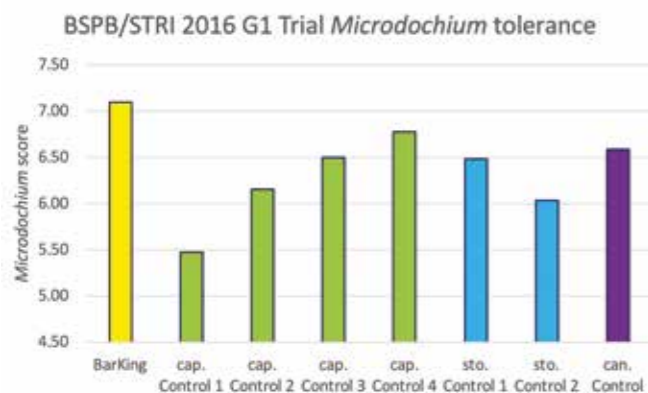


Figure 2 2016 G1 BSPB trial data. *Microdochium* tolerance of *BarKing* (ranked #1 in trial), compared to Control varieties of browntop (cap.), creeping (sto.) and velvet (can.) bentgrasses.

IN THE BAG

60%	BARKING Browntop bentgrass
40%	CHARLES Browntop bentgrass

Sowing rate:	8-10g per m ²
Overseeding rate:	4-6g per m ²
Sowing depth:	Rootzone contact
Mowing height:	Down to 3mm
Pack size:	20kg

CULTIVAR	Shoot Density	Visual Merit	Mean
<i>CHARLES</i>	7.6	7.6	7.6
<i>Arrowtown</i>	7.0	7.2	7.1
<i>Cleek (LA)</i>	6.9	7.1	7.0
<i>Manor</i>	6.9	7.0	6.9
<i>BARKING</i>	6.5	7.0	6.7

Figure 1 Top scoring/ranking browntop bentgrass cultivars in BSPB Turfgrass Seed 2020 Table G1.



Duo Bent

Golf greens

Usage

Overseeding golf and bowling greens

Key points

- Charles #1 by 0.5!
- L-93XD next-generation creeping bent
- Independently UK-trialled concept of species combination (DUO)

Species Formulation

50% browntop bentgrass
50% creeping bentgrass

DUO BENT is a 100% bentgrass blend designed for overseeding and species exchange in golf and bowling greens. It is of particular interest to golf courses focussed on outcompeting *Poa annua* at low <3.5mm heights of cut on greens.

Charles is a new NZ-bred variety of *capillaris* browntop, named after Bob Charles, the first left-handed golfer to win a major. Like Bob, it breaks new ground, being ranked #1 in Turfgrass Seed 2020 Table G1 - a clear half-point higher than other browntop or creeping bent cultivars (see Figure 1)! Its scores for visual merit and shoot density promise to have a major impact as part of a species exchange programme, improving golf greens and out-competing the ubiquitous *Poa annua*.

L-93XD is part of the latest generation of *stolonifera* creeping bentgrass from USA breeding programmes. In the 2018 NTEP trials, it was ranked very highly by Mean Quality, achieving "top-25%" status in almost two-thirds of locations. This compares very favourably with other cultivars present in the UK market (*777*; *Pure Select* and *Barracuda (Riptide)*).

Barenbrug recently published results of an extensive four-year trial assessed independently by the STRI, which highlighted the potential benefits of combining creeping and browntop cultivars to outcompete *Poa annua*. A copy of this booklet can be found via www.barenbrug.co.uk.

CULTIVAR	Shoot Density	Visual Merit	Mean
<i>CHARLES</i>	7.6	7.6	7.6
<i>Arrowtown</i>	7.0	7.2	7.1
<i>Cleek (LA)</i>	6.9	7.1	7.0
<i>Manor</i>	6.9	7.0	6.9
<i>BARKING</i>	6.5	7.0	6.7

IN THE BAG

50%	CHARLES Browntop bentgrass
50%	L-93XD Creeping bentgrass

Sowing rate:	8-10g per m ²
Overseeding rate:	4-6g per m ²
Sowing depth:	Rootzone contact
Mowing height:	Down to 2mm
Pack size:	10kg

Figure 1 Top scoring/ranking browntop bentgrass cultivars in BSPB Turfgrass Seed 2020 Table G1.



SGT Fairway

Golf tees and fairways, under sustainable management

Usage

Overseeding, divotting and/or construction of medium-fine turf with moderate wear and low maintenance requirements

Key points

- Barprrium nitrogen-use efficiency
- Drought tolerance of Barjessica and Hardtop
- High Red Thread disease tolerance
- High turf colour retention under low input maintenance

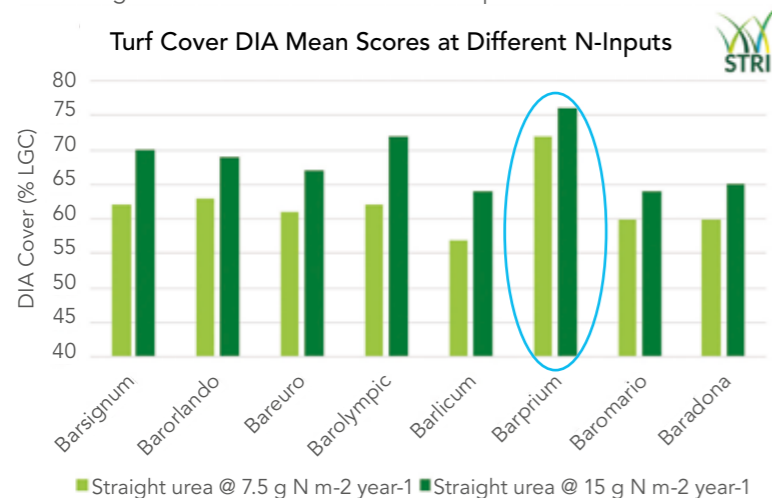
Species Formulation

- 30% perennial ryegrass
- 30% strong creeping red fescue
- 20% slender creeping red fescue
- 20% hard fescue

SGT FAIRWAY is a new mixture of four grass species and sub-species, designed for the overseeding, divotting or construction of a balanced blend of medium-fine turf across a range of soil types.

SGT stands for "Sustainable Grass Technology" – Barenbrug's research-driven concept designed to deliver outstanding turf performance in high stress conditions with reduced fertiliser, chemical and water inputs.

The "driver" of the mixture is 30% Barprrium perennial ryegrass. Barprrium is an outstanding fine-leaved ryegrass with proven capacity for nitrogen-use efficiency. Put simply, it requires far less nitrogen (up to 50% less) to deliver equivalent turf performance. Figure 1 shows the results of an independent 18-month trial with STRI.



IN THE BAG

- 30% **BARPRRIUM**
Perennial ryegrass
- 30% **BARJESSICA**
Strong creeping red fescue
- 20% **VIKTORKA**
Slender creeping red fescue
- 20% **HARDTOP**
Hard fescue

- Sowing rate:** 25-35g per m²
- Overseeding rate:** 10-25g per m²
- Sowing depth:** 5-10mm below thatch
- Mowing height:** Down to 10mm
- Pack size:** 20kg

Figure 1 STRI N-Efficiency Trial data. Barprrium gives equivalent mean turf cover to all other cultivars over 18-month trial at 50% less nitrogen input.

STRI researchers concluded in their trial report: "The best performing cultivar in this trial was Barprrium, with good turf quality and coverage observed at all N levels and N types. Even at very low levels of N, Barprrium still showed good quality and coverage. Conversely at high levels of N, Barprrium did not promote excessive vertical growth."

"When Barprrium fertilised at 7.5gN/m²/year was compared to all other cultivars at 15gN/m²/year, the turf quality and coverage of Barprrium was greater than all other cultivars, despite having received 50% less N."

Barprrium is highly ranked in the BSPB/STRI Turfgrass Seed 2020 booklet with a score of 7.9 on Table L1 and exhibits strong summer colour and very high Red Thread tolerance – both useful characteristics for low-input golf fairways.

The fine fescue cultivars in the mix are chosen for their sustainable performance characteristics also. In trials at Landlab in Italy, Hardtop hard fescue and Barjessica strong creeping red fescue perform particularly well in periods of heat and drought. Figure 2 shows data from the harsh summer of 2018, in comparison with other fine fescue cultivars. The turf quality of hard fescue stood alone during the most intense heat and the recovery capacity of Barjessica was exceptional.

Performance of fine fescue varieties over 9 month period at Landlab Research, Vicenza, Italy (hot and dry summer 2018)

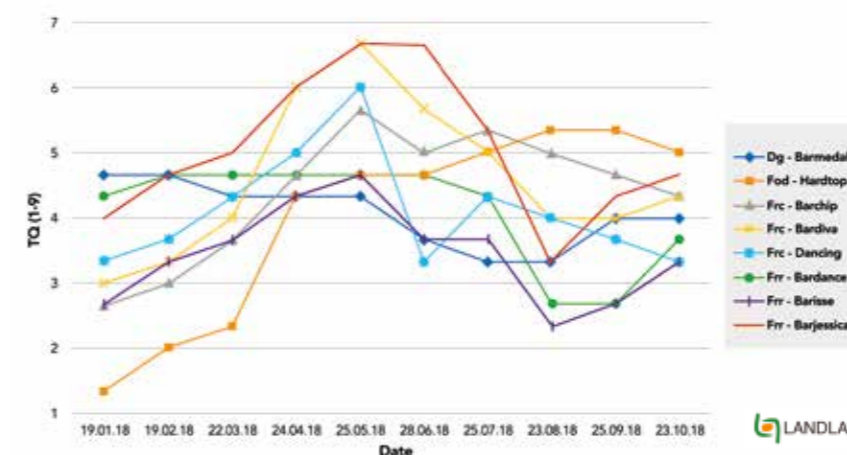
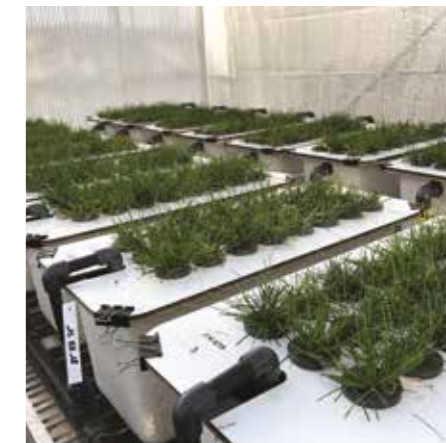


Figure 2 Graph to show fluctuations in fine fescue performance (NTEP Turf Quality (TQ) assessments) over 9-month period during (hot and dry) 2018 in Landlab, Italy. Note the superior scores of Hardtop hard fescue and Barjessica strong creeping red fescue.

In addition to drought tolerance, the fine fescue components all exhibit superior colour and excellent disease tolerance. Viktorka and Barjessica are both ranked #3 in their respective lists for Red Thread and Hardtop is ranked #1 for Winter Colour.

For sustainable medium-fine turf, SGT Fairway represents a thoroughly researched product, offering benefits in terms of low-nitrogen input performance, drought and disease tolerance, and superior grass colour.





Medal

Golf greens, tees, fairways, bowling greens

Usage

Overseeding, divoting and/or construction of medium-fine and fine turf with high wear; golf and bowling greens; tees and fairways

Key points

- Barolympic #1 Table G4 8.7
- Eventus #3 FoL L1
- Excellent red fescues Viktorka and Barrissee

Species Formulation

60% perennial ryegrass
20% slender creeping red fescue
20% strong creeping red fescue

MEDAL is a mixture of perennial ryegrass and red fescue, designed for the construction or overseeding of medium-fine and fine turf under high wear pressure.

The main components of the mixture are the ryegrasses: *Barolympic* and *Eventus*. *Barolympic* is the stand-out cultivar ryegrass for summer sports use. It is ranked with a score of 8.7 in Table G4 of BSPB TGS 2020, the highest Mean score in the entire publication, and more than a full point clear of its nearest rival in G4! See Table 1.

Eventus is ranked #3 for Fineness of Leaf in TGS Table L1 and shows very fast recovery and growth rates (ranked #1 in the top 40, Table L1) for a summer sports ryegrass. This enables quick germination, establishment and mid-season repair in areas of high traffic.

Viktorka and *Barrissee* are both excellent performers, highly ranked in their respective tables in TGS 2020. They both exhibit exceptionally high shoot density and red thread tolerance for their sub-species of red fescue.

CULTIVAR	Shoot Density	Visual Merit	Mean
<i>BAROLYMPIC</i>	8.6	8.8	8.7
<i>Clementine</i>	7.7	7.6	7.6
<i>Cabrio</i>	7.3	7.5	7.4
<i>Barsignum</i>	7.2	7.2	7.2
<i>Monroe</i>	6.8	7.2	7.0
<i>Dickens 1</i>	6.9	7.0	7.0
<i>Estelle</i>	6.5	6.9	6.7

Table 1 Top scoring /ranking perennial ryegrass cultivars in BSPB Turfgrass Seed 2020 Table G4.

IN THE BAG

40%	BAROLYMPIC Perennial ryegrass
20%	EVENTUS Perennial ryegrass
20%	VIKTORKA Slender creeping red fescue
20%	BARRISSEE Strong creeping red fescue

Sowing rate:	25-35g per m ²
Overseeding rate:	15-25g per m ²
Sowing depth:	8-12mm below thatch
Mowing height:	Down to 4mm
Pack size:	20kg



Ultrafine

Golf greens, surrounds, walk-offs, bowling greens

Usage

Overseeding and/or construction of fine turf with intense wear; greens, surrounds, tennis courts

Key points

- Barolympic #1 Table G4 8.7
- Barsignum #4 Table G4
- Eventus #3 FoL L1; excellent recovery and fast growth

Species Formulation

100% perennial ryegrass

ULTRAFINE is a blend of perennial ryegrasses for use in areas of fine turf that demand tolerance to close-mowing and high wear with exceptional fineness of leaf. Golf green surrounds, walk-offs and tennis courts are perfect examples of where this grass seed mix comes into its own.

Barolympic is the stand-out cultivar ryegrass for summer sports use. It is ranked with a score of 8.7 in Table G4 of BSPB TGS 2020, the highest Mean score in the entire publication, and more than a full point clear of its nearest rival in G4! See Table 1.

In addition to its outstanding Mean scores, *Barolympic* is ranked in the top-2 for pale colour and fineness of leaf in Tables L1 and G4. This makes it exceptionally easy to blend in with other grass species, such as red fescue or annual meadowgrass.

Barsignum is another outstanding ryegrass from Barenbrug's European Turf breeding programme, ranked #5 in Tables L1 and #4 in G4.

Finally, *Eventus* is ranked #3 for Fineness of Leaf in TGS Table L1 and shows very fast recovery and growth rates (ranked #1 in the top 40, Table L1) for a summer sports ryegrass. This enables quick germination, establishment and mid-season repair in areas of high traffic.

CULTIVAR	Shoot Density	Visual Merit	Mean
<i>BAROLYMPIC</i>	8.6	8.8	8.7
<i>Clementine</i>	7.7	7.6	7.6
<i>Cabrio</i>	7.3	7.5	7.4
<i>BARSIGNUM</i>	7.2	7.2	7.2
<i>Monroe</i>	6.8	7.2	7.0
<i>Dickens 1</i>	6.9	7.0	7.0
<i>Estelle</i>	6.5	6.9	6.7

IN THE BAG

50%	BAROLYMPIC Perennial ryegrass
30%	BARSIGNUM Perennial ryegrass
20%	EVENTUS Perennial ryegrass

Sowing rate:	25-50g per m ²
Overseeding rate:	20-30g per m ²
Sowing depth:	10-15mm below thatch
Mowing height:	Down to 4mm
Pack size:	20kg

Table 1 Top scoring /ranking perennial ryegrass cultivars in BSPB Turfgrass Seed 2020 Table G4.



Extreme Tees, fairways

Usage

Overseeding, divoting and/or construction of medium-fine turf with intense wear; tees, fairways, cricket squares and outfields

Key points

- *Barolympic* #1 Table G4 8.7
- Fineness of leaf *Barolympic* #2; *Eventus* #3; *Bargold* #7
- Wear tolerance *Barcristalla*

Species Formulation

100% perennial ryegrass

EXTREME is a blend of perennial ryegrasses for use in areas of medium-fine turf that demand tolerance to close-mowing and high wear with exceptional fineness of leaf. Cricket squares and outfields, golf tees & fairways, tennis courts and high-traffic fine lawns are perfect examples of where this grass seed mix is at home.

All four cultivars bring advantages and different characteristics to the mix.

Barolympic (40%) is the stand-out cultivar ryegrass for summer sports use. It is ranked with a score of 8.7 in Table G4 of BSPB TGS 2019, the highest Mean score in the entire publication, and more than a full point clear of its nearest rival in G4!

Eventus is ranked #3 for Fineness of Leaf in TGS Table L1 and shows very fast recovery and growth rates (ranked #1 in the top 40, Table L1) for a summer sports ryegrass.

This enables quick germination, establishment and mid-season repair in areas of high traffic.

Barcristalla is a medium-fine ryegrass with excellent wear tolerance and superior colour. It is ranked #11 for wear tolerance (Table S1) and #1 of any grass in the top-80 for year-round genetic colour.

Old favourite *Bargold* remains an excellent cultivar, still ranked well inside the top-10 for leaf fineness in Table L1.

IN THE BAG

40%	BAROLYMPIC Perennial ryegrass
30%	BARCRISTALLA Perennial ryegrass
20%	EVENTUS Perennial ryegrass
10%	BARGOLD Perennial ryegrass

Sowing rate:	25-50g per m ²
Overseeding rate:	20-30g per m ²
Sowing depth:	10-15mm below thatch
Mowing height:	
Golf	Down to 5mm
Cricket	Down to 2mm
Pack size:	20kg



RPR Golf Tees, fairways, walkways, roughs

Usage

Overseeding, divoting and/or construction of golf turf with intense wear and HoC >12mm e.g. walkways

Key points

- *Barlibro* RPR delivers fast establishment and unparalleled capacity for recovery from wear due to stoloniferous growth habit.
- *Europitch* #3 S1; top-20 in L1
- *Barcristalla* #11 in S1

Species Formulation

100% perennial ryegrass

RPR GOLF is a blend of perennial ryegrasses for use in areas of intensive golf traffic, delivering turf with exceptional wear tolerance, fast recovery and good aesthetics.

Barlibro is a Regenerating Perennial Ryegrass (RPR) that produces stolons as it establishes and grows. Figure 1 shows a *Barlibro* plant grown for a single seed at 15 months old. The stolons and new secondary branches of growth can be seen clearly. The lateral growth habit results in fast establishment between seeding lines and unparalleled capacity for recovery after, and during wear.

Europitch is a medium-fine ryegrass with outstanding tolerance to wear. It is ranked #3 in Table S1, BSPB/STRI Turfgrass Seed 2020.

Barcristalla is another outstanding ryegrass for wear tolerance, ranked #11 in Table S1. Its high disease tolerance and darker genetic colour are additional traits of interest.



IN THE BAG

40%	BARLIBRO Perennial ryegrass
30%	EUROPITCH Perennial ryegrass
30%	BARCRISTALLA Perennial ryegrass

Sowing rate:	25-50g per m ²
Overseeding rate:	20-30g per m ²
Sowing depth:	10-15mm below thatch
Mowing height:	Down to 12mm
Pack size:	20kg

Figure 1 Photographs of a 15-month old *Barlibro* plant grown from a single seed.

Cricket & Tennis



Extreme

Cricket squares & outfield, Tennis, Hockey, Lacrosse

Usage

Overseeding, divoting and/or construction of medium-fine turf with intense wear; tees, fairways, cricket squares and outfield

Key points

- Barolympic #1 Table G4 8.7
- Fineness of leaf Barolympic #2; Eventus #3; Bargold #7
- Wear tolerance Barcristalla

Species Formulation

100% perennial ryegrass

EXTREME is a blend of perennial ryegrasses for use in areas of medium-fine turf that demand tolerance to close-mowing and high wear with exceptional fineness of leaf. Cricket squares and outfield, golf tees & fairways, tennis courts and high-traffic fine lawns are perfect examples of where this grass seed mix is at home.

All four cultivars bring advantages and different characteristics to the mix.

Barolympic (40%) is the stand-out cultivar ryegrass for summer sports use. It is ranked with a score of 8.7 in Table G4 of BSPB TGS 2019, the highest Mean score in the entire publication, and more than a full point clear of its nearest rival in G4!

Eventus is ranked #3 for Fineness of Leaf in TGS Table L1 and shows very fast recovery and growth rates (ranked #1 in the top 40, Table L1) for a summer sports ryegrass. This enables quick germination, establishment and mid-season repair in areas of high traffic.

Barcristalla is a medium-fine ryegrass with excellent wear tolerance and superior colour. It is ranked #11 for wear tolerance (Table S1) and #1 of any grass in the top-80 for year-round genetic colour.

Old favourite *Bargold* remains an excellent cultivar, still ranked well inside the top-10 for leaf fineness in Table L1.

IN THE BAG

40%	BAROLYMPIC Perennial ryegrass
30%	BARCRISTALLA Perennial ryegrass
20%	EVENTUS Perennial ryegrass
10%	BARGOLD Perennial ryegrass

Sowing rate:	25-50g per m ²
Overseeding rate:	20-30g per m ²
Sowing depth:	10-15mm below thatch
Mowing height:	
Golf	Down to 5mm
Cricket	Down to 2mm
Pack size:	20kg



Medal

Cricket outfields, Tennis courts

Usage

Overseeding, divoting and/or construction of medium-fine and fine turf with high wear; golf and bowling greens; tees and fairways

Key points

- *Barolympic* #1 Table G4 8.7
- *Eventus* #3 FoL L1; ranked #5 on L1 and #4 G4
- Excellent red fescues *Viktorka* and *Barrisse*

Species Formulation

60% perennial ryegrass
20% slender creeping red fescue
20% strong creeping red fescue

MEDAL is a mixture of perennial ryegrass and red fescue, designed for the construction or overseeding of medium-fine and fine turf under high wear pressure.

The main components of the mixture are the ryegrasses: *Barolympic* and *Eventus*. *Barolympic* is the stand-out cultivar ryegrass for summer sports use. It is ranked with a score of 8.7 in Table G4 of BSPB TGS 2020, the highest Mean score in the entire publication, and more than a full point clear of its nearest rival in G4! See Table 1.

Eventus is ranked #3 for Fineness of Leaf in TGS Table L1 and shows very fast recovery and growth rates (ranked #1 in the top 40, Table L1) for a summer sports ryegrass. This enables quick germination, establishment and mid-season repair in areas of high traffic.

Viktorka and *Barrisse* are both excellent performers, highly ranked in their respective tables in TGS 2020. They both exhibit exceptionally high shoot density and red thread tolerance for their sub-species of red fescue.

CULTIVAR	Shoot Density	Visual Merit	Mean
<i>BAROLYMPIC</i>	8.6	8.8	8.7
<i>Clementine</i>	7.7	7.6	7.6
<i>Cabrio</i>	7.3	7.5	7.4
<i>Barsignum</i>	7.2	7.2	7.2
<i>Monroe</i>	6.8	7.2	7.0
<i>Dickens 1</i>	6.9	7.0	7.0
<i>Estelle</i>	6.5	6.9	6.7

Table 1 Top scoring /ranking perennial ryegrass cultivars in BSPB Turfgrass Seed 2020 Table G4.



Ultrafine

Tennis courts

Usage

Overseeding and/or construction of fine turf with intense wear; greens, surrounds, tennis courts

Key points

- *Barolympic* #1 Table G4 8.6
- *Barsignum* #4 Table G4
- *Eventus* #3 FoL L1
- Excellent recovery and fast growth

Species Formulation

100% perennial ryegrass

ULTRAFINE is a blend of perennial ryegrasses for use in areas of fine turf that demand tolerance to close-mowing and high wear with exceptional fineness of leaf. Golf green surrounds, walk-offs and tennis courts are perfect examples of where this grass seed mix comes into its own.

Barolympic is the stand-out cultivar ryegrass for summer sports use. It is ranked with a score of 8.7 in Table G4 of BSPB TGS 2020, the highest Mean score in the entire publication, and more than a full point clear of its nearest rival in G4! See Table 1.

In addition to its outstanding Mean scores, *Barolympic* is ranked in the top-2 for pale colour and fineness of leaf in Tables L1 and G4. This makes it exceptionally easy to blend in with other grass species, such as red fescue or annual meadowgrass.

Barsignum is another outstanding ryegrass from Barenbrug's European Turf breeding programme, ranked #5 in Tables L1 and #4 in G4.

Finally, *Eventus* is ranked #3 for Fineness of Leaf in TGS Table L1 and shows very fast recovery and growth rates (ranked #1 in the top 40, Table L1) for a summer sports ryegrass. This enables quick germination, establishment and mid-season repair in areas of high traffic.

CULTIVAR	Shoot Density	Visual Merit	Mean
<i>BAROLYMPIC</i>	8.6	8.8	8.7
<i>Clementine</i>	7.7	7.6	7.6
<i>Cabrio</i>	7.3	7.5	7.4
<i>BARSIGNUM</i>	7.2	7.2	7.2
<i>Monroe</i>	6.8	7.2	7.0
<i>Dickens 1</i>	6.9	7.0	7.0
<i>Estelle</i>	6.5	6.9	6.7

IN THE BAG

- 50% *BAROLYMPIC* Perennial ryegrass
- 30% *BARSIGNUM* Perennial ryegrass
- 20% *EVENTUS* Perennial ryegrass

- Sowing rate:** 25-50g per m²
- Overseeding rate:** 20-30g per m²
- Sowing depth:** 10-15mm below thatch
- Mowing height:** Down to 4mm
- Pack size:** 20kg

Table 1 Top scoring /ranking perennial ryegrass cultivars in BSPB Turfgrass Seed 2020 Table G4.

Football & Rugby



Elite Sport Football & Rugby

Usage

Renovation and/or construction of elite winter sports pitches

Key points

- 4 cultivars in top-15; mean score of 7.80 Table S1 BSPB/STRI 2020
- *Barcristalla* superior colour, particularly Autumn

Species Formulation

100% perennial ryegrass

ELITE SPORT is a blend of four hard-wearing perennial ryegrasses for the renovation and construction of winter sports pitches.

The mixture is formulated primarily on performance in the BSPB/STRI Turfgrass Seed Booklet; specifically, Table S1 under sports wear simulation. All four cultivars are ranked in the top-15 of this table, and the blend has an outstanding Mean score of 7.80 (see Figure 1).

Barcristalla has much darker genetic colour than other top varieties and has exceptional *Drechslera* leaf spot, two factors important to elite stadium environments.

CULTIVAR	Live Ground Cover	Visual Merit	Mean	Recovery	Shoot Density	Fineness of Leaf	Resistance to Red Thread	Winter Greenness	Summer Greenness
<i>Barzico</i> (LA)	8.2	8.2	8.2	7.6	8.1	7.5	4.3	5.4	5.6
<i>Barbasten</i> (LA)	8.0	8.0	8.0	7.6	7.5	6.5	5.8	5.0	5.4
EUROPITCH	7.9	8.0	8.0	7.5	8.0	7.7	4.1	5.3	5.1
<i>Eurobeat</i>	8.0	7.9	7.9	7.1	7.7	6.9	5.5	5.4	5.4
<i>Eurodiamond</i>	8.0	7.9	7.9	7.1	7.6	6.5	4.0	5.3	5.4
<i>Gildara</i> (LA)	7.7	7.8	7.8	6.9	7.7	7.8	4.6	5.4	6.5
EUROCORDUS	7.8	7.7	7.8	7.5	7.6	6.8	-	5.4	5.4
<i>Monroe</i>	7.7	7.8	7.7	7.6	7.5	7.9	6.3	5.8	6.0
<i>Eurosport</i>	7.6	7.7	7.7	7.8	7.5	7.0	-	5.7	5.7
<i>Euroscout</i> (LA)	7.7	7.6	7.6	7.5	7.4	6.7	6.2	5.1	5.5
BARCRISTALLA	7.7	7.5	7.6	7.0	7.1	6.9	6.0	6.2	7.2
<i>Cameron</i>	7.5	7.7	7.6	7.8	7.5	7.8	4.3	5.6	5.8
BARADONA	7.6	7.5	7.6	7.5	7.4	7.0	3.8	5.3	6.0
<i>Barlicum</i>	7.4	7.6	7.5	6.5	7.7	7.6	3.6	5.5	5.0
<i>Baromario</i>	7.4	7.5	7.5	6.9	7.6	7.3	5.2	5.6	6.1

Figure 1 Table S1 Turfgrass Seed 2020

IN THE BAG

45%	EUROPITCH Perennial ryegrass
25%	EUROCORDUS Perennial ryegrass
20%	BARCRISTALLA Perennial ryegrass
10%	BARADONA Perennial ryegrass

Sowing rate:	30-50g per m ²
Overseeding rate:	15-30g per m ²
Sowing depth:	10-15mm below thatch
Mowing height:	Down to 18mm
Pack size:	20kg



RPR Sport

Football & Rugby, Stadium environments

Usage

Renovation and/or construction of winter sports pitches

Key points

- Mixture formulated from dedicated UK Cropvale wear trials with objective DIA scoring; wear tolerance with other benefits
- *Barlibro* RPR delivers fast establishment and unparalleled capacity for recovery from wear due to stoloniferous growth habit
- *Barcristalla* and *Barorlando* give superior colour and *Drechslera* leaf spot tolerance

Species Formulation

100% perennial ryegrass

RPR SPORT is a highly researched blend of three hard-wearing perennial ryegrasses for the renovation and construction of elite winter sports pitches.

Four years of dedicated wear trials at our research station Cropvale in Worcestershire, together with close analysis of BSPB Turfgrass Seed and the official French list as well as data from our breeding stations across the globe has delivered a blend focussed on four key traits for high performance pitches – **wear tolerance, dark genetic colour, (*Drechslera*) disease tolerance and recovery.**

The wear trials at Cropvale are run annually in line with the football season and are assessed via an objective method called Digital Image Analysis (DIA) (Figure 1). A camera box takes images of trial plots on a monthly basis and DIA enables the production of extremely accurate data on both wear tolerance and genetic colour for both cultivars and critically, mixture formulations.

BSPB/STRI Turfgrass Seed 2020 data supports the Cropvale Research. *Barcristalla* and *Barorlando* are ranked #11 and #16, respectively, for mean performance under wear and #2 and #1 for autumn colour (in the top-80 varieties).

Baribro is a Regenerating Perennial Ryegrass (RPR) that produces stolons as it establishes and grows. The lateral growth habit results in fast establishment between seeding lines and unparalleled capacity for recovery after and during wear.



IN THE BAG

- 40% **BARCRISTALLA**
Perennial ryegrass
- 30% **BARLIBRO**
RPR perennial ryegrass
- 30% **BARORLANDO**
Perennial ryegrass

Sowing rate:	30-50g per m ²
Overseeding rate:	15-30g per m ²
Sowing depth:	10-15mm below thatch
Mowing height:	Down to 18mm
Pack size:	20kg

Figure 1 DIA "Digital Image Analysis" process. A digital image is scanned using software to determine "% live ground cover".



Multi Sport

Football, Rugby, multi-use sports fields



Usage

Renovation and/or construction of sports fields

Key points

- All 4 cultivars in top-16; mean score of 7.52 Table S1 BSPB/STRI 2020
- 100% UK produced grass seed
- Exceptional colour for reduced nitrogen requirements
- All 4 cultivars listed in Table L1; mean score of 6.96

Species Formulation

100% perennial ryegrass

MULTI SPORT is a blend of four hard-wearing perennial ryegrasses for the renovation and construction of sports pitches.

The mixture is formulated with a focus on performance and sustainability. All the cultivars are ranked in the top-16 of Table S1 in the BSPB/STRI Turfgrass Seed Booklet 2020 and are all produced by British farms here in the UK.

Barorlando and *Barcristalla* (65% of the mix) are ranked #1 and #2, respectively, in the top-80 varieties for autumn colour, which means that MULTI SPORT outperforms competitors' blends with this regard.

All four varieties are also listed in table L1 of the BSPB/STRI Turfgrass Seed Booklet 2020, which means the blend has adaptability for sports fields with multiple usage or at variable seasonal mowing heights.

Baradona is new to the Sport Range for 2020. It is an excellent all-round performer with particularly high shoot density and good fineness of leaf – ranked in top-10 in Table L1. *Baradona* and *Baromario* both exhibit very strong performance at mowing heights as low as 10mm.

IN THE BAG

- 35% **BARCRISTALLA**
Perennial ryegrass
- 30% **BARORLANDO**
Perennial ryegrass
- 20% **BAROMARIO**
Perennial ryegrass
- 15% **BARADONA**
Perennial ryegrass

Sowing rate:	30-50g per m ²
Overseeding rate:	15-30g per m ²
Sowing depth:	10-15mm below thatch
Mowing height:	Down to 10mm
Pack size:	20kg



Smooth Sport Football & Rugby

Usage

Construction of winter sports pitches with long establishment window

Key points

- *Eurosport* and *Barorlando* highly rated in TGS S1 (7.8 & 7.5)
- *Bariris* highly rated in TGS S2 (7.1)

Species Formulation

80% perennial ryegrass
20% smooth-stalked meadowgrass

SMOOTH SPORT is a blend of perennial ryegrasses and smooth-stalked meadowgrass for the construction of winter sports pitches. It is recommended to allow at least three months for the smooth-stalked meadowgrass to establish.

The mixture is formulated primarily on performance in the BSPB/STRI Turfgrass Seed Booklet; specifically, Tables S1 and S2 under sports wear simulation. *Eurocordus* and *Bariris* are ranked in the top-10 of their respective tables; *Barorlando* (ranked #16) delivers additional disease tolerance and colour to the mix.

IN THE BAG

40%	EUROCORDUS Perennial ryegrass
40%	BARORLANDO Perennial ryegrass
20%	BARIRIS Smooth-stalked meadowgrass

Sowing rate:	30-40g per m ²
Overseeding rate:	15-20g per m ²
Sowing depth:	10-15mm below thatch
Mowing height:	Down to 18mm
Pack size:	20kg



SOS Football & Rugby

Usage

Overseeding and **repair** of sports turf and racecourses in cool temperatures

Key points

- *Barterra* annual ryegrass germinates, establishes and grows faster than perennial ryegrasses
- *Barorlando* offers fast cool temperature germination for a perennial and provides a long-term wear tolerance in the mix

Species Formulation

50% annual ryegrass
50% perennial ryegrass

SOS is designed to give the fastest possible germination, establishment and growth for emergency repair or diverting sports turf and racecourses.

Barterra is the latest generation amenity annual ryegrass that will germinate at temperatures as low as 3.5°C, making it the ideal tool to maintain grass cover throughout the winter. Barenbrug research shows that amenity annual ryegrasses germinate more quickly and at lower temperatures than perennial ryegrass, including tetraploid varieties.

Barorlando is partnered with *Barterra* to give a longer-term solution within the mix as it is a perennial ryegrass with good performance characteristics, wear tolerance and disease tolerance.

Barenbrug research favours the use of a hard-wearing diploid perennial rather than a tetraploid alternative as a partner to annual ryegrasses for winter grass seed mixtures.

IN THE BAG

50%	BARTEERRA Annual ryegrass
50%	BARORLANDO Perennial ryegrass

Sowing rate:	30-40g per m ²
Overseeding rate:	20-40g per m ²
Sowing depth:	4-8mm below thatch
Mowing height:	Down to 20mm
Pack size:	20kg

Racing & Polo



RPR Sprint Racecourses

Usage

Overseeding, divoting and construction of racecourses

Key points

- Cultivars that germinate, establish and grow quickly, including *Drumbo*, a forage variety
- RPR offers unparalleled capacity for recovery from wear due to stoloniferous growth habit and increases traction strength of sward
- *Eurocordus*, *Barorlando*, *Barlicum* all highly wear tolerant

Species Formulation

100% perennial ryegrass

RPR SPRINT is a 100% perennial ryegrass seed mixture specifically formulated for the unique demands of racecourses. The blend includes a range of ryegrass breeding material, including a regenerating stoloniferous cultivar and a forage type.

Fast establishment, strong and robust growth and superior recovery from wear are the key requirements when renovating or divoting turf on a racecourse.

A major difference between equestrian surfaces and other sports is the mowing height at which the sward is maintained. The STRI/BSPB Turfgrass Seed Booklet trials grasses at 4-7mm, 10-15mm and 25mm, which is of little practical use to racecourse grounds managers. RPR SPRINT is designed to be maintained at 60mm+ height of cut, which allows broader-leaved and faster growing varieties to be utilised.

Drumbo is actually a forage perennial, but one with excellent sward density, leaf spot tolerance and persistency.

Eurocordus, *Barorlando* and *Barlicum* have superior wear tolerance properties and excellent recovery from damage.

Barlibro is a Regenerating Perennial Ryegrass (RPR) that produces stolons as it establishes and grows. The lateral growth habit results in fast establishment between seeding lines, unparalleled capacity for recovery from wear, and additional traction strength in the sward.

IN THE BAG

30%	BARLIBRO RPR Perennial ryegrass
20%	BARLICUM Perennial ryegrass
20%	BARORLANDO Perennial ryegrass
15%	DRUMBO Perennial ryegrass
15%	EUROCORDUS Perennial ryegrass

Sowing rate:	25-35g per m ²
Overseeding rate:	15-25g per m ²
Sowing depth:	10-15mm below thatch
Mowing height:	Down to 60mm
Pack size:	20kg



SOS Racing

Usage

Overseeding and repair of sports turf and racecourses in cool temperatures

Key points

- *Barterra* annual ryegrass germinates, establishes and grows faster than perennial ryegrasses
- *Barorlando* offers fast cool temperature germination for a perennial and provides a long-term wear tolerance in the mix.

Species Formulation

50% annual ryegrass
50% perennial ryegrass

SOS is designed to give the fastest possible germination, establishment and growth for emergency repair or divoting sports turf and racecourses.

Barterra is the latest generation amenity annual ryegrass that will germinate at temperatures as low as 3.5°C, making it the ideal tool to maintain grass cover throughout the winter. Barenbrug research shows that amenity annual ryegrasses germinate more quickly and at lower temperatures than perennial ryegrass, including tetraploid varieties.

Barorlando is partnered with *Barterra* to give a longer-term solution within the mix as it is a perennial ryegrass with good performance characteristics, wear tolerance and disease tolerance.

Barenbrug research favours the use of a hard-wearing diploid perennial rather than a tetraploid alternative as a partner to annual ryegrasses for winter grass seed mixtures.

IN THE BAG

50% **BAR TERRA**
Annual ryegrass
50% **BARORLANDO**
Perennial ryegrass

Sowing rate: 30-40g per m²
Overseeding rate: 20-40g per m²
Sowing depth: 4-8mm below thatch
Mowing height: Down to 20mm
Pack size: 20kg



Extreme Parade rings and lawns

Usage

Overseeding, divoting and/or construction of medium-fine turf with intense wear; tees, fairways, cricket squares and outfields

Key points

- *Barolympic* #1 Table G4 8.7
- Fineness of leaf *Barolympic* #2; *Eventus* #3; *Bargold* #7
- Wear tolerance *Barcristalla*

Species Formulation

100% perennial ryegrass

EXTREME is a blend of perennial ryegrasses for use in areas of medium-fine turf that demand tolerance to close-mowing and high wear with exceptional fineness of leaf. **Cricket squares and outfields, golf tees & fairways, tennis courts and high-traffic fine lawns are perfect examples of where this grass seed mix is at home.**

All four cultivars bring advantages and different characteristics to the mix.

Barolympic (40%) is the stand-out cultivar ryegrass for summer sports use. It is ranked with a score of 8.7 in Table G4 of BSPB TGS 2019, the highest Mean score in the entire publication, and more than a full point clear of its nearest rival in G4!

Eventus is ranked #3 for Fineness of Leaf in TGS Table L1 and shows very fast recovery and growth rates (ranked #1 in the top 40, Table L1) for a summer sports ryegrass. This enables quick germination, establishment and mid-season repair in areas of high traffic.

Barcristalla is a medium-fine ryegrass with excellent wear tolerance and superior colour. It is ranked #11 for wear tolerance (Table S1) and #1 of any grass in the top-80 for year-round genetic colour.

Old favourite *Bargold* remains an excellent cultivar, still ranked well inside the top-10 for leaf fineness in Table L1.

IN THE BAG

40% **BAROLYMPIC**
Perennial ryegrass
30% **BARCRISTALLA**
Perennial ryegrass
20% **EVENTUS**
Perennial ryegrass
10% **BARGOLD**
Perennial ryegrass

Sowing rate: 25-50g per m²
Overseeding rate: 20-30g per m²
Sowing depth: 10-15mm below thatch
Mowing height:
Golf Down to 5mm
Cricket Down to 2mm
Pack size: 20kg

Knowledge Turf Grass Identification



PERENNIAL RYEGRASS
Lolium perenne



SMOOTH-STALKED MEADOWGRASS
Poa pratensis



SLENDER CREEPING RED FESCUE
Festuca rubra litoralis



STRONG CREEPING RED FESCUE
Festuca rubra rubra



CHEWINGS RED FESCUE
Festuca rubra commutata



BROWNTOP BENT
Agrostis capillaris



CREEPING BENT
Agrostis stolonifera



HARD FESCUE
Festuca trachyphylla



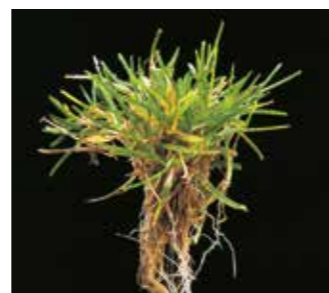
TALL FESCUE
Festuca arundinacea



TUFTED HAIRGRASS
Deschampsia caespitosa



CRESTED HAIRGRASS
Koeleria macrantha



ANNUAL MEADOWGRASS
Poa annua

Sowing and Seeding Rates

Sowing rates - Kilograms (kg) required				Area coverage	
Standard Areas		5g/m ²	20g/m ²	Seed Rates (per 20kg bag)	Coverage
Football	4,050m ²	-	80	5g/m ²	4,000m ²
Football	10,800m ²	-	225	10g/m ²	2,000m ²
Rugby	6,900m ²	-	150	15g/m ²	1,333m ²
Tennis	262m ²	-	5.5	20g/m ²	1,000m ²
Cricket	520m ²	-	10.5	25g/m ²	800m ²
Bowls	1,600m ²	8	32	30g/m ²	666m ²
Golf	500m ²	2.5	10	35g/m ²	571m ²

Guide to Species Characteristics

Species	Soil Conditions				Maintenance						
	Seeds per gram (g)	Optimal pH range	Humidity	Salt tolerance	Maintenance level	Fast establishment	Rhizomes / Stolens / Tufted	Shade tolerance	Nitrogen requirement	Water requirement	Thatch build-up
<i>Agrostis capillaris</i> Browntop bent	14,000	5.6 -7.0	medium	moderate	medium	poor	R	good	Medium	Medium	High
<i>Agrostis stolonifera</i> Creeping bent	16,000	5.6 -7.0	high	good	intensive	poor	S	good	Very high	High	Very high
<i>Festuca rubra rubra</i> Strong creeping red fescue	1,000	5.5 -6.8	low	weak	low	average	R	very good	Low	Low	Medium
<i>Festuca rubra commutata</i> Chewings red fescue	1,000	5.5 -6.8	low	weak	low	average	T	good	Low	Low/medium	High
<i>Festuca rubra litoralis</i> Slender creeping red fescue	1,000	5.5 -6.8	low	good	low	average	R	good	Low	Low	High
<i>Festuca ovina</i> Sheeps fescue	2,000	4.5 -5.8	very low	weak	very low	average	T	average	Very low	Low/very low	Low
<i>Festuca trachyphylla</i> Hard fescue	2,000	4.5 -7.5	very low	good	very low	average	T	very good	Very low	Low/very low	Low
Rhizomatous Tall Fescue (RTF)	400	5.5 -7.0	high	good	medium	average	R	very good	Medium	Very low	Low
<i>Festuca arundinacea</i> Tall fescue	450	5.5 -7.0	high	good	medium	average	T	very good	Medium	Very low	Low
<i>Lolium perenne</i> Perennial ryegrass	700	5.8 -7.4	medium	medium	medium	good	T	average	High	Medium	Low
<i>Poa pratensis</i> Smooth-stalked meadowgrass	3,300	5.8 -7.5	medium	weak	medium	poor	R	poor	High	Medium	Medium
<i>Poa trivialis</i> Rough-stalked meadowgrass	5,500	5.8 -7.2	high	weak	medium	average	S	average	High	High	Medium
<i>Poa annua</i> Annual meadowgrass	6,500	5.5 -7.5	high	weak	intensive	average	T	good	High	High	Medium
<i>Koeleria macrantha</i> Crested hairgrass	3,000	5.5 -8.0	low	good	very low	average	R	good	Very low	Low/very low	Very low
<i>Deschampsia caespitosa</i> Tufted hairgrass	3,800	5.5 -6.5	high	medium	low	good	T	excellent	Medium	High	High

Our Partners

Approved Distributors



ATB Sports Solutions

T 01707 642 178
E contact@atbone.co.uk
W www.atbone.co.uk

Head Office

Crossoaks Farm
Crossoaks Lane
Well End
Nr. Borehamwood
WD6 5PH



Avoncrop Amenity Products Ltd

T 01344 891730
E sales@avoncrop-amenity.com
W www.avoncrop-amenity.com

Head Office

2 Millside Park
Crouch Lane
Winkfield
Windsor
SL4 4PX



Bourne Amenity

T 01797 252299
E info@bourneamenity.co.uk
W www.bourneamenitysport.com

Head Office

The Wharf
Rye Road
Newenden
Kent
TN18 5QG



Collier Turf Care

T 01328 700600
E sales@collier-turf-care.co.uk
W www.collier-turf-care.co.uk

Head Office

Drury Square
Herne Lane
Beeston
Norfolk
PE32 2NA



Cropcare

T 01 287 4485
E info@cropcare.ie
W www.cropcare.ie

Head Office

Willowgrove
Delgany
Co. Wicklow
Ireland



East Riding Horticulture Ltd

T 01904 608157
E sales@eastridinghorticultureltd.co.uk
W www.eastridinghorticultureltd.co.uk

Head Office

Glebe Farm Cottage
Sutton Upon Derwent
York
East Riding of Yorkshire
YO41 4BY



Greentech Sportsturf Ltd

T 01786 480020 T 0879 133915 (Ire)
E info@greentechsportsturf.co.uk
W www.greentechsportsturf.co.uk

Head Office (Scot) Head Office (Ire)

Bandeath	Greenhills
Throsk	Drogheda
Stirling	Co Louth
FK7 7NP	Eire



Irwins Sportsturf

T 07879 775527
E kyle@isturf.com
W www.isturf.com

Head Office

24 Lilburn Hall
Lurgan
BT66 7TL



Turfcare Specialists Ltd

T 01207 505837
E sales@tsl-ne.co.uk
W www.turfcarespecialists.co.uk

Head Office

Units 1-4 Crag Works
Pont Lane
Leadgate, Consett
County Durham, DH8 6LA

Regional technical support

David Greenshields

Scotland
T 07799 430784
E dgreenshields@barenbrug.co.uk

Phil Logan

North England, Ireland & NI
T 07887 503796
E plogan@barenbrug.co.uk

Luke Hunt

East & South-East England
T 07909 786916
E lhunt@barenbrug.co.uk

Richard Sheppard

South-West England & Wales
T 07548 595296
E rsheppard@barenbrug.co.uk

Barenbrug UK Ltd

33 Perkins Road
Rougham Industrial Estate
Bury St Edmunds
Suffolk
IP30 9ND

T 01359 272000

E info@barenbrug.co.uk



www.barenbrug.co.uk

Conditions of sale

In case of unavailability Barenbrug UK Limited reserves the right to substitute any variety in any mixture with one of similar merit.

Any change will be detailed on the bag.

The placing of an order constitutes an acceptance of our terms and conditions of sale by the buyer.

Full terms and conditions can be found at www.barenbrug.co.uk.

 **BARENBRUG**

Make Life Beautiful